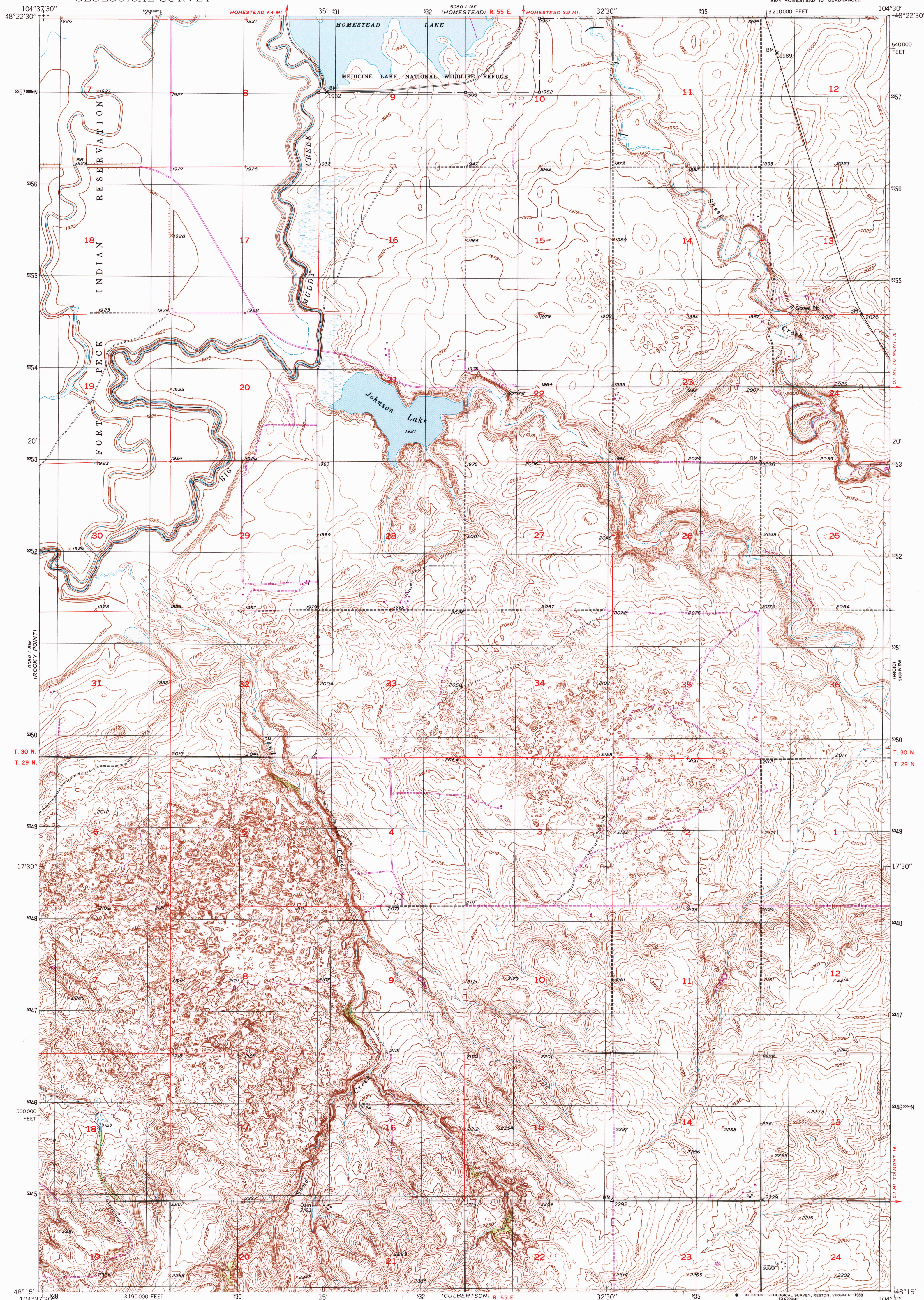
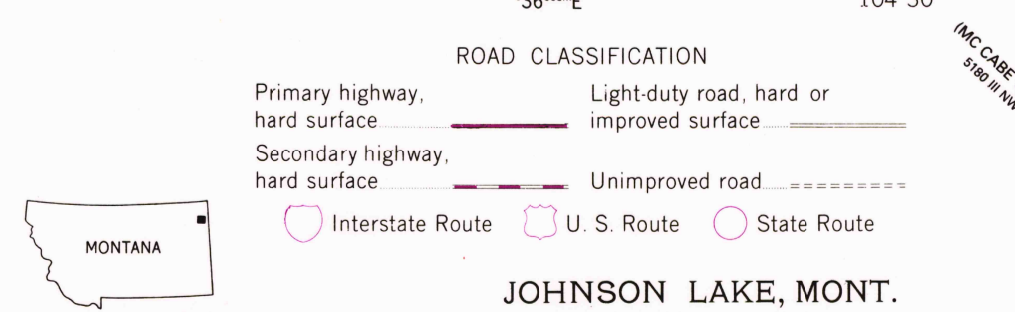
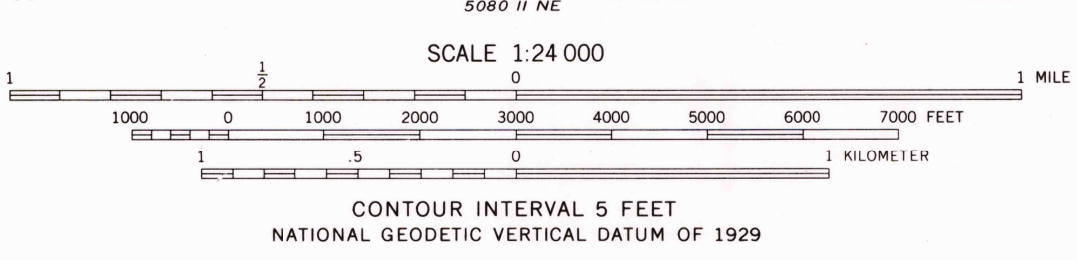
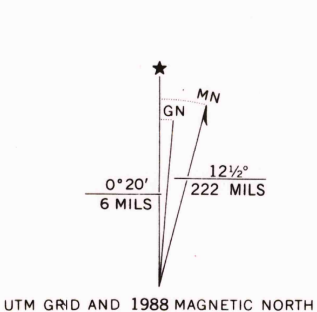


UNITED STATES
DEPARTMENT OF THE INTERIOR
GEOLOGICAL SURVEY

JOHNSON LAKE QUADRANGLE
MONTANA—ROOSEVELT CO.
7.5 MINUTE SERIES (TOPOGRAPHIC)



Mapped, edited, and published by the Geological Survey as part of the Department of the Interior program for the development of the Missouri River Basin Control by USGS and USC&GS
Topography from aerial photographs by multiplex methods, and by plane-table surveys 1947, 1948 and 1949
Aerial photographs taken May 1947
Polyconic projection. 1927 North American Datum
10,000-foot grid ticks based on Montana coordinate system, north zone
1000-meter Universal Transverse Mercator grid, zone 13
To place on the predicted North American Datum 1983 move the projection lines 2 meters north and 39 meters east as shown by dashed corner ticks
There may be private inholdings within the boundaries of the National or State reservations shown on this map



JOHNSON LAKE, MONT.
SE 1/4 HOMESTEAD 15' QUADRANGLE
48104-C5-TF-024

Revisions shown in purple and woodland compiled from aerial photographs taken 1980 and other sources
This information not field checked. Map edited 1988
1949
PHOTOREVISED 1988
DMA 5080 1 SE—SERIES 5984

