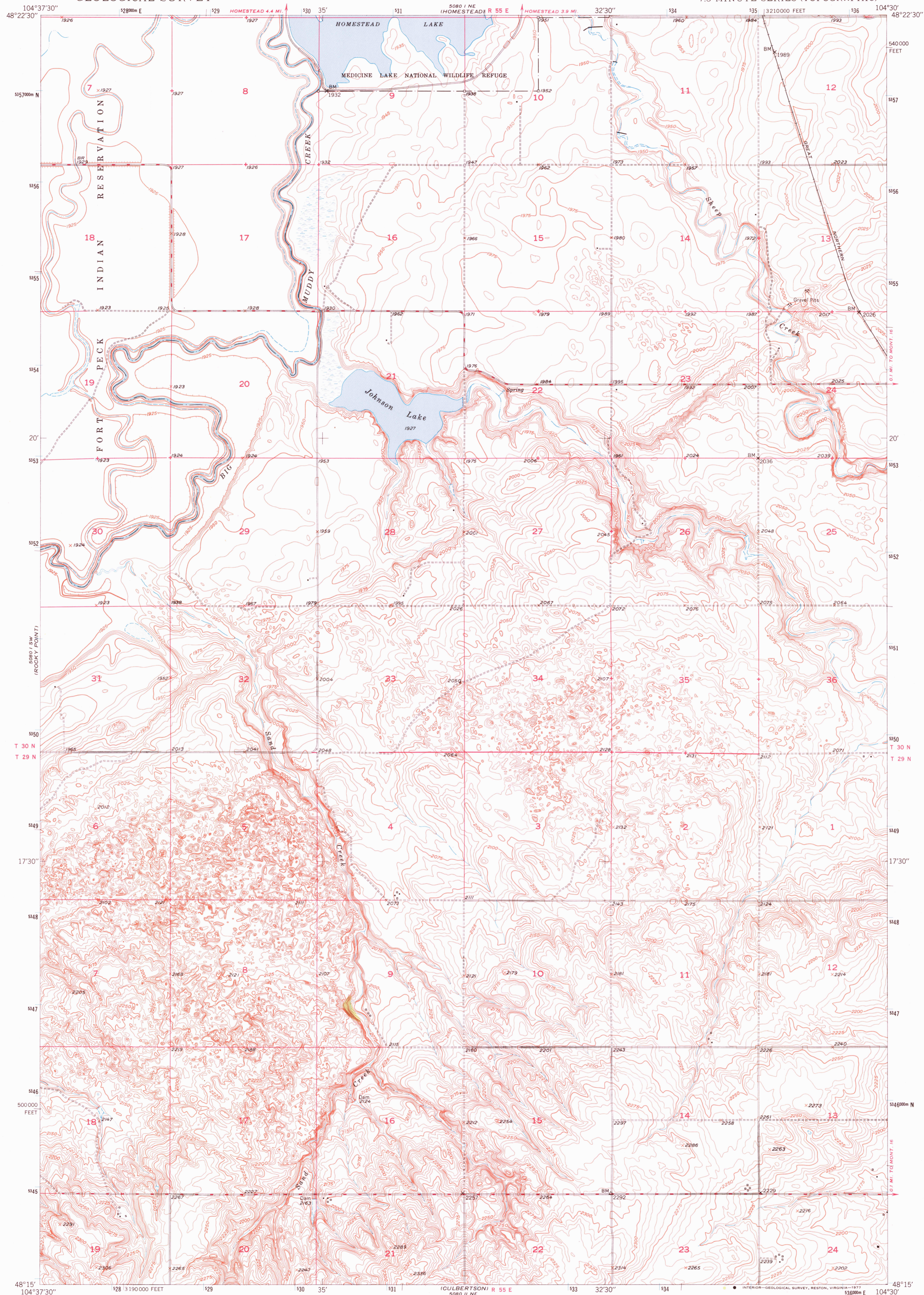


UNITED STATES
DEPARTMENT OF THE INTERIOR
GEOLOGICAL SURVEY

JOHNSON LAKE QUADRANGLE
MONTANA-ROOSEVELT CO.
7.5 MINUTE SERIES (TOPOGRAPHIC)

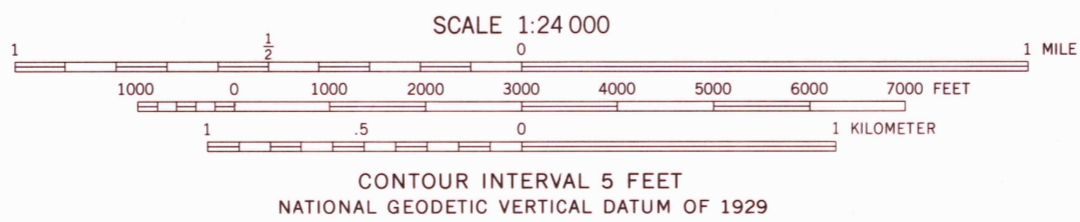


Mapped, edited, and published by the Geological Survey
as part of the Department of the Interior program
for the development of the Missouri River Basin
Control by USGS and USC&GS

Topography from aerial photographs by multiplex methods,
and by plane-table surveys 1947, 1948 and 1949
Aerial photographs taken May 1947

Polycyclic projection. 1927 North American datum
10,000-foot grid based on Montana coordinate system,
north zone

1000-meter Universal Transverse Mercator grid ticks,
zone 13, shown in blue



THIS MAP COMPLIES WITH NATIONAL MAP ACCURACY STANDARDS
FOR SALE BY U. S. GEOLOGICAL SURVEY, DENVER, COLORADO 80225, OR RESTON, VIRGINIA 22092
A FOLDER DESCRIBING TOPOGRAPHIC MAPS AND SYMBOLS IS AVAILABLE ON REQUEST

ROAD CLASSIFICATION
HARD-SURFACE ALL WEATHER ROADS DRY WEATHER ROADS
Heavy-duty LANE 16 LANE Improved dirt
Medium-duty LANE 16 LANE Unimproved dirt
Loose-surface, graded, or narrow hard-surface
U. S. Route State Route

JOHNSON LAKE, MONT.
N4815-W10430/7.5
1949

AMS 5080 1 SE - SERIES V894

DEC 2 1 1977

1200