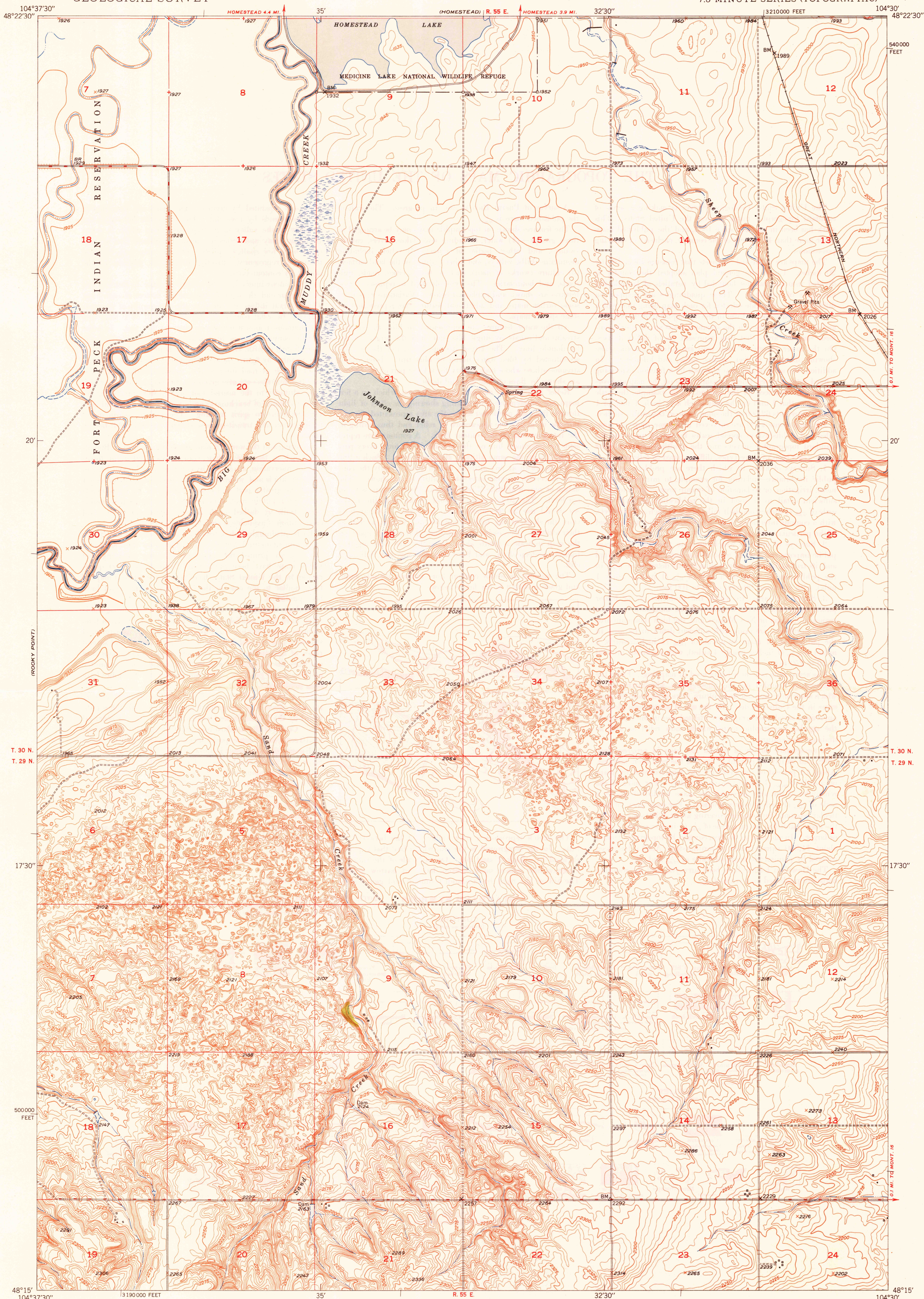
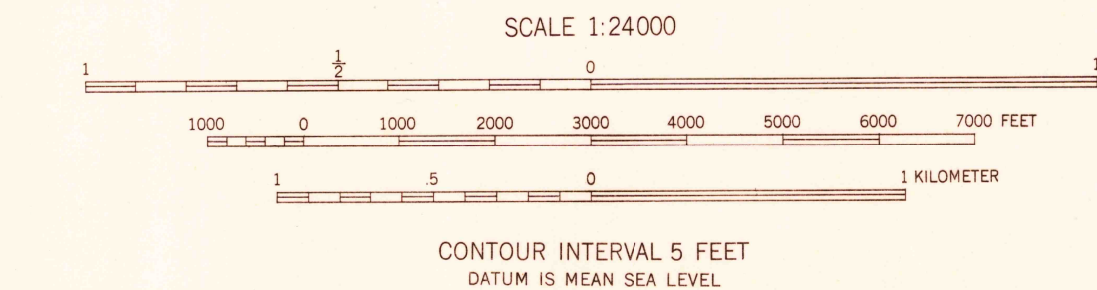


U. S. G. S.  
FILE COPY  
Inspection and Editing.



Mapped, edited, and published by the Geological Survey  
as part of the Department of the Interior program  
for the development of the Missouri River Basin  
Control by USGS and USC&GS  
Topography from aerial photographs by multiplex methods,  
and by plane-table surveys 1947, 1948 and 1949  
Aerial photographs taken May 1947  
Polyconic projection. 1927 North American datum  
10,000-foot grid based on Montana coordinate system,  
north zone

TRUE NORTH  
MAGNETIC NORTH  
APPROXIMATE MEAN  
DECLINATION, 1949



ROAD CLASSIFICATION  
HARD-SURFACE ALL WEATHER ROADS DRY WEATHER ROADS  
Heavy-duty ———— 1 LANE IS LANE Improved dirt ————  
Medium-duty ———— 1 LANE IS LANE Unimproved dirt ————  
Loose-surface, graded, or narrow hard-surface ————  
U. S. Route State Route

JOHNSON LAKE, MONT.  
N4815-W10430/7.5

EDITION OF 1950

FOR SALE BY U. S. GEOLOGICAL SURVEY, FEDERAL CENTER, DENVER, COLORADO, OR WASHINGTON 25, D. C.

USGS  
Historical File  
Topographic Division

U. S. G. S.  
FILE COPY  
Inspection and Editing.

MAR 20 1950 2090