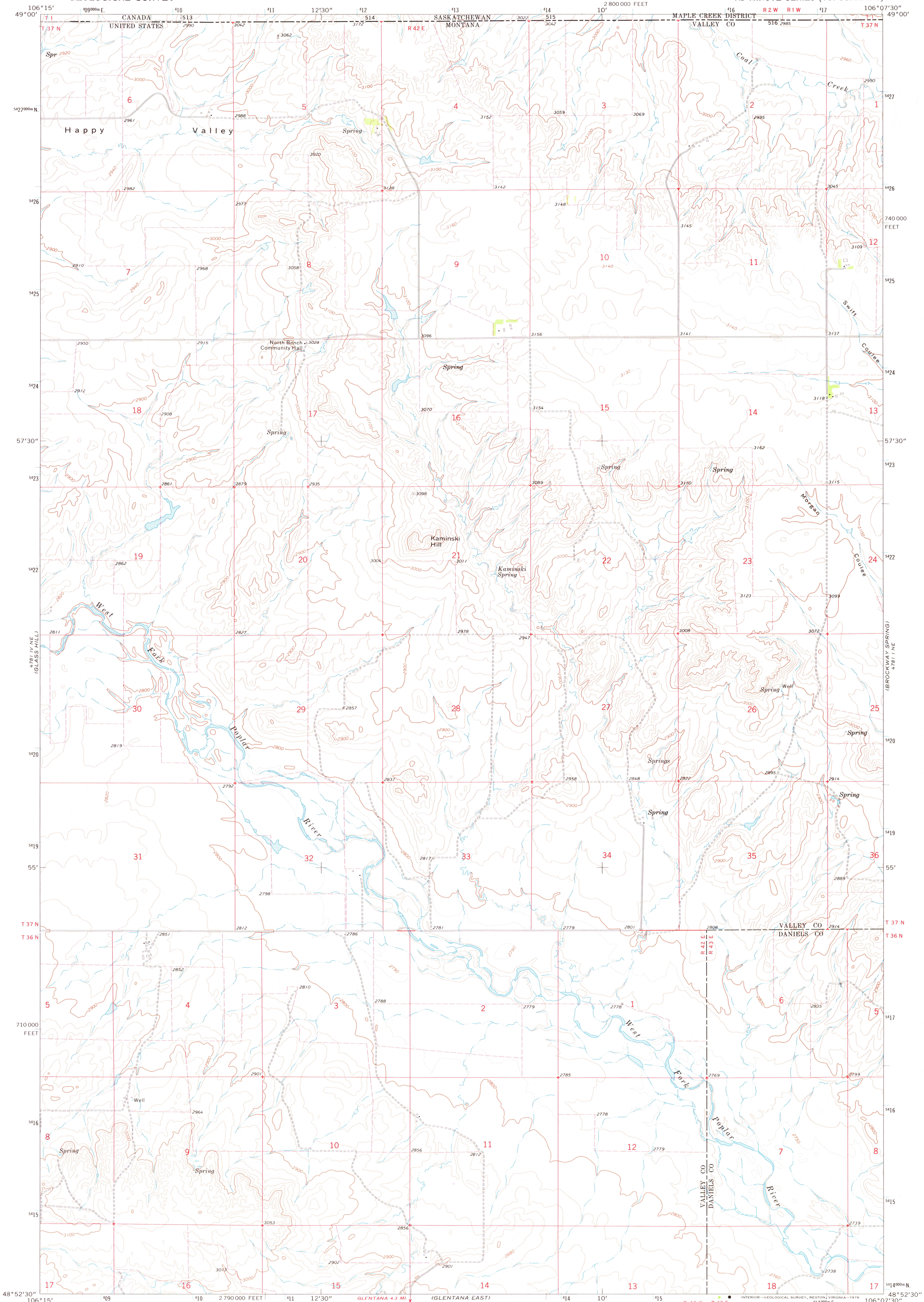


UNITED STATES
DEPARTMENT OF THE INTERIOR
GEOLOGICAL SURVEY

KAMINSKI HILL QUADRANGLE
MONTANA-SASKATCHEWAN
7.5 MINUTE SERIES (TOPOGRAPHIC)



Mapped, edited, and published by the Geological Survey

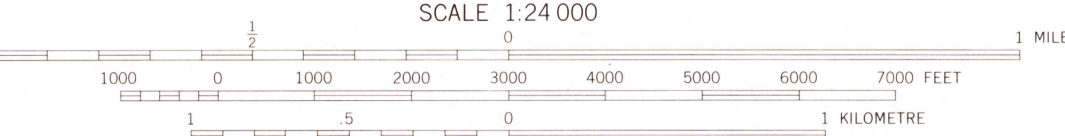
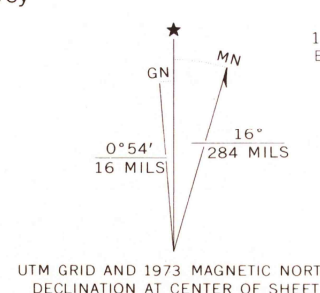
Control by USGS and NOS/NOAA

Topography by photogrammetric methods from aerial photographs taken 1972. Field checked 1973

Projection and 10,000-foot grid ticks: Montana coordinate system, north zone (Lambert conformal conic) 1000-metre Universal Transverse Mercator grid ticks, zone 13, shown in blue. 1927 North American datum

Fine red dashed lines indicate selected fence lines

Dotted land lines from map by Department of Energy, Mines, and Resources, Canada



CONTOUR INTERVAL 20 FEET
DOTTED LINES REPRESENT 10-FOOT CONTOURS
NATIONAL GEODETIC VERTICAL DATUM OF 1929



ROAD CLASSIFICATION	
Primary highway, hard surface	Light-duty road, hard or improved surface
Secondary highway, hard surface	Unimproved road
Interstate Route	U. S. Route
	State Route

KAMINSKI HILL, MONT.-SASK.
N4852.5-W10607.5/7.5

USGS
Historical File
Topographic Division

AMS 4781 | NW-SERIES V894

RETURN TO:
USGS NHD HISTORICAL MAP ARCHIVES

OCT 20 1976