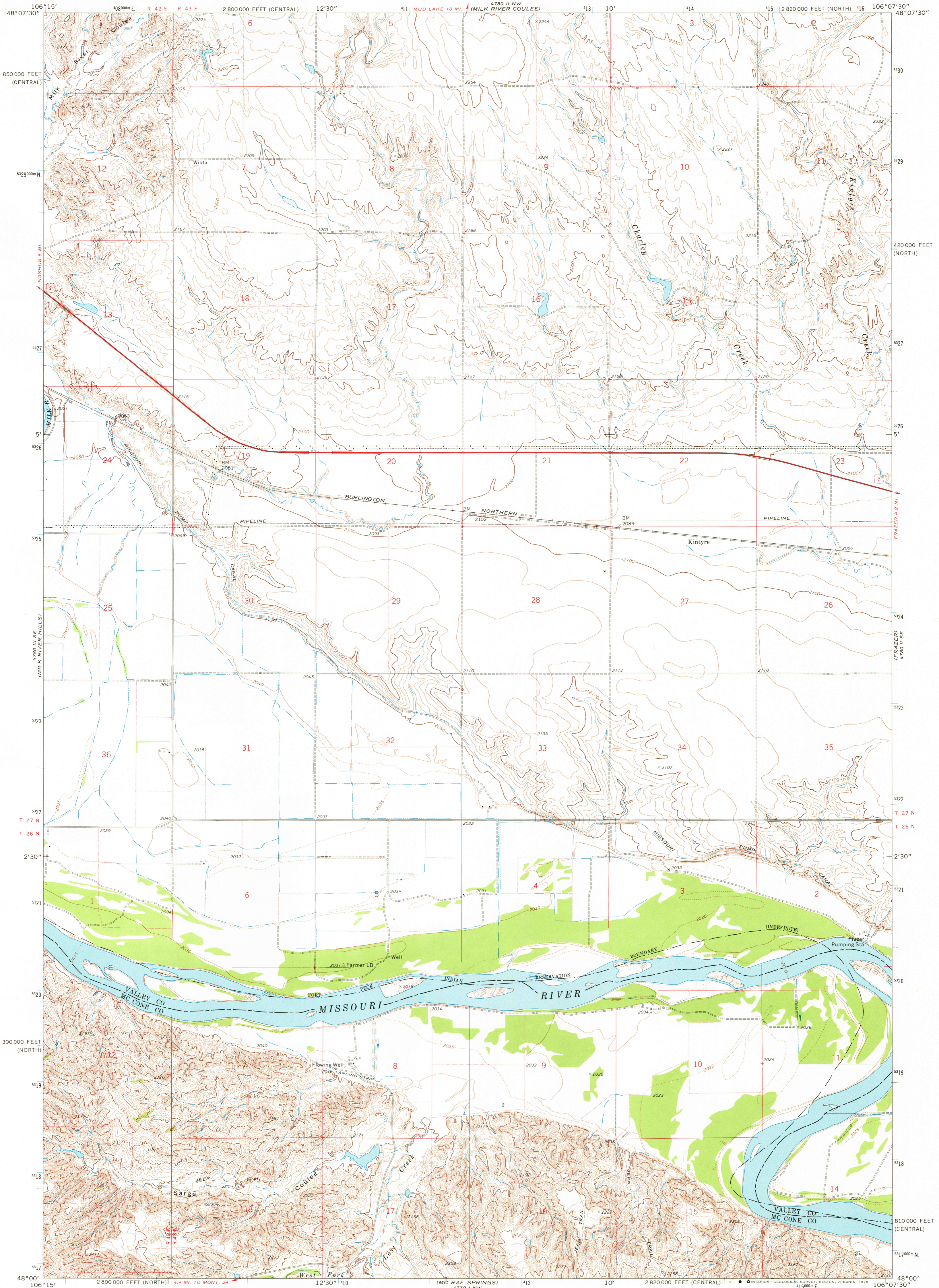


4780 II NE
INDUBBE RESERVOIR

UNITED STATES
DEPARTMENT OF THE INTERIOR
GEOLOGICAL SURVEY

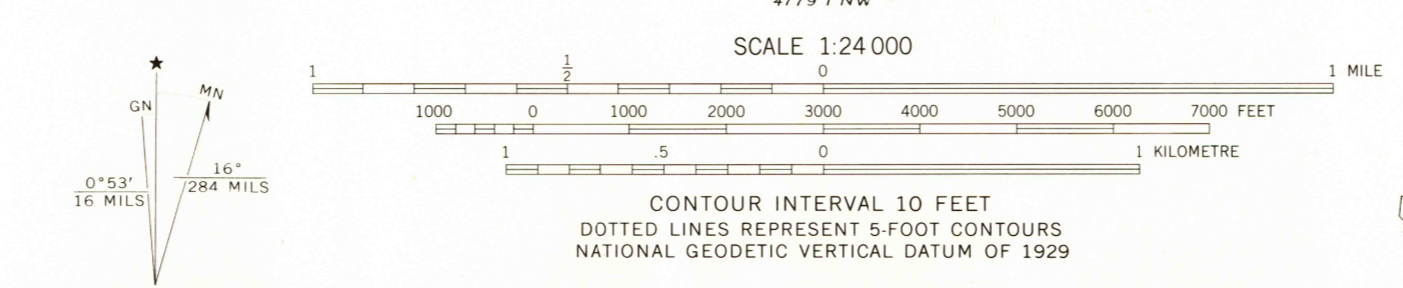
KINTYRE QUADRANGLE
MONTANA
7.5 MINUTE SERIES (TOPOGRAPHIC)
SW 4 FRAZER 15' QUADRANGLE

4780 II NE
INDUBBE RESERVOIR



1800 FT SE
MILK RIVER HILLS

Mapped, edited, and published by the Geological Survey
Control by USGS and NOS/NOAA
Topography by photogrammetric methods from aerial photographs taken 1971. Field checked 1972
Projection: Montana coordinate system, north zone (Lambert conformal conic)
10,000-foot grid ticks based on Montana coordinate system, north and central zones
1000-metre Universal Transverse Mercator grid ticks, zone 13, shown in blue. 1927 North American datum
Fine red dashed lines indicate selected fence lines



ROAD CLASSIFICATION
Primary highway, hard surface
Secondary highway, hard surface
Light duty road, hard or improved surface
Unimproved road
Interstate Route
U. S. Route
State Route

THIS MAP COMPLIES WITH NATIONAL MAP ACCURACY STANDARDS
FOR SALE BY U.S. GEOLOGICAL SURVEY, DENVER, COLORADO 80225, OR RESTON, VIRGINIA 22092
A FOLDER DESCRIBING TOPOGRAPHIC MAPS AND SYMBOLS IS AVAILABLE ON REQUEST

USGS
Historical File
Topographic Division

KINTYRE, MONT.
SW 4 FRAZER 15' QUADRANGLE
N4800-W10607.5/7.5
1972
AMS 4780 II SW-SERIES V894

MAR 29 1976