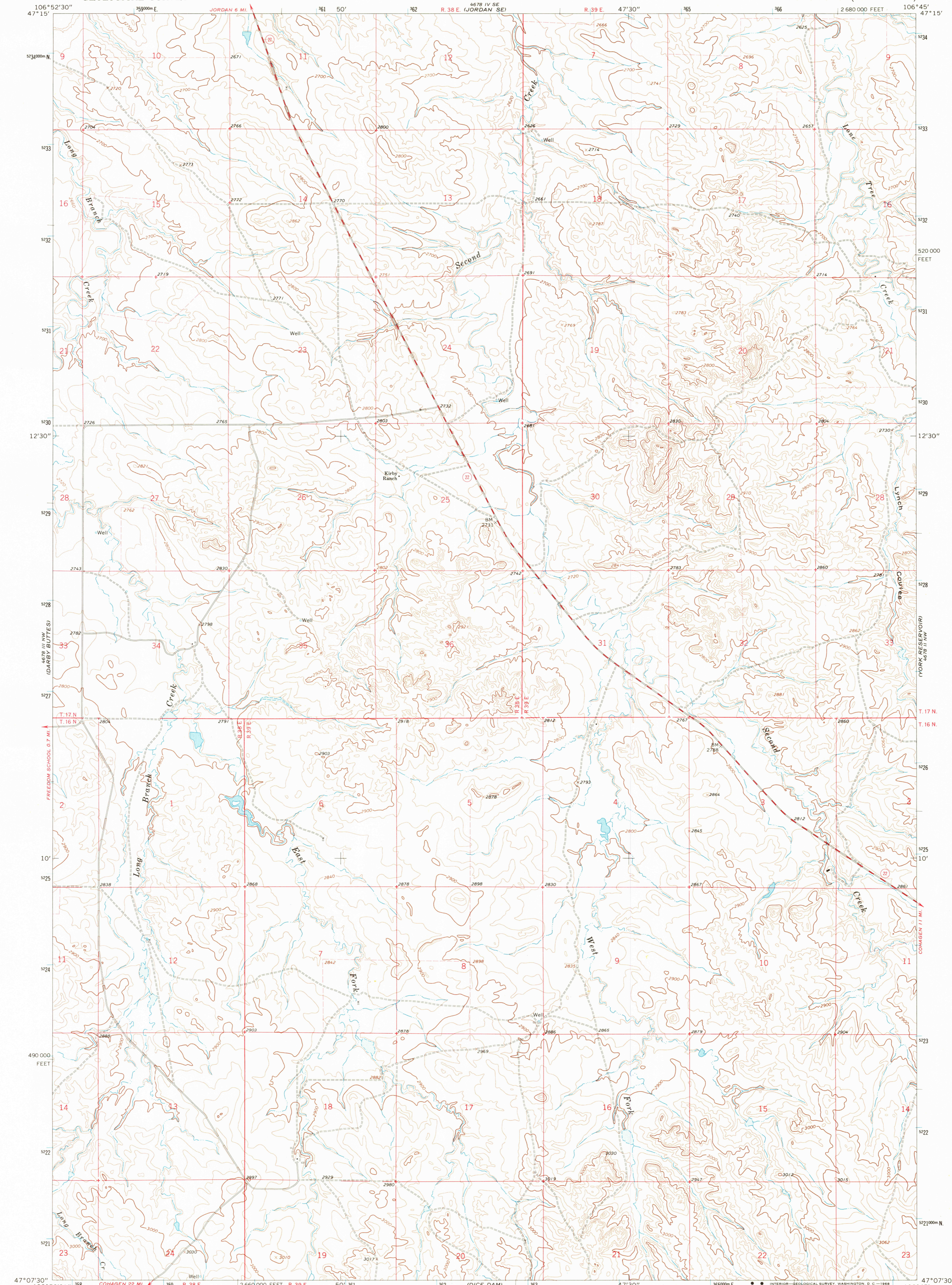


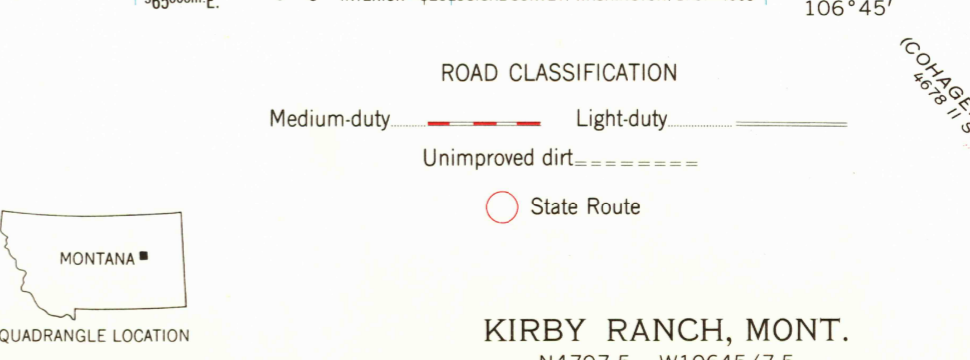
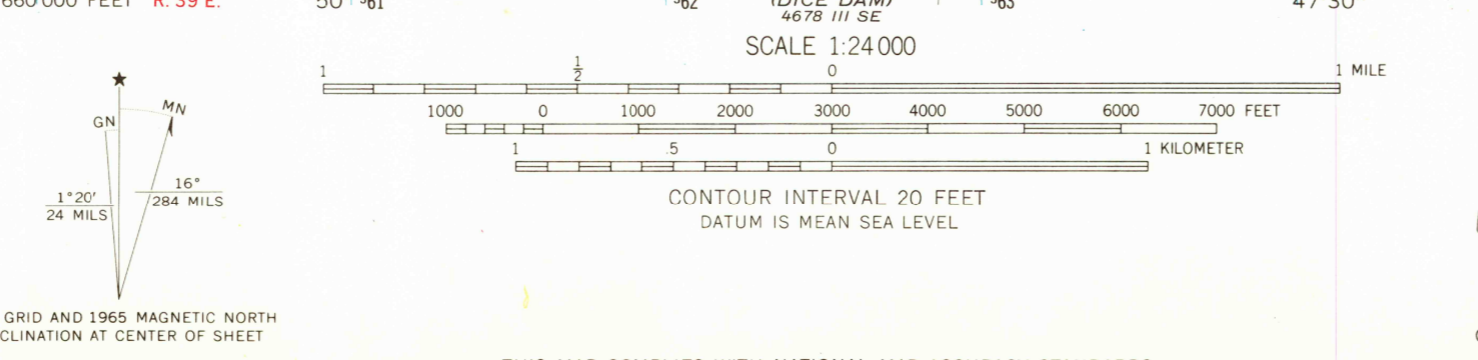
UNITED STATES  
DEPARTMENT OF THE INTERIOR  
GEOLOGICAL SURVEY

KIRBY RANCH QUADRANGLE  
MONTANA—GARFIELD CO.  
7.5 MINUTE SERIES (TOPOGRAPHIC)

4678 IV SE  
BLACK JOHN COULEE



Mapped, edited, and published by the Geological Survey  
Control by USGS and USC&GS  
Topography by photogrammetric methods from aerial  
photographs taken 1964. Field checked 1965  
Polyconic projection. 1927 North American datum  
10,000-foot grid based on Montana coordinate system,  
central zone  
1000-meter Universal Transverse Mercator grid ticks,  
zone 13, shown in blue  
Fine red dashed lines indicate selected fence lines



USGS  
Historical File  
Topographic Division  
**U.S.G.S.  
FILE COPY  
TOPOGRAPHIC DIVISION**  
2750  
OCT 1968  
KIRBY RANCH, MONT.  
N4707.5—W10645/7.5  
1965  
AMS 4678 III NE—SERIES V894