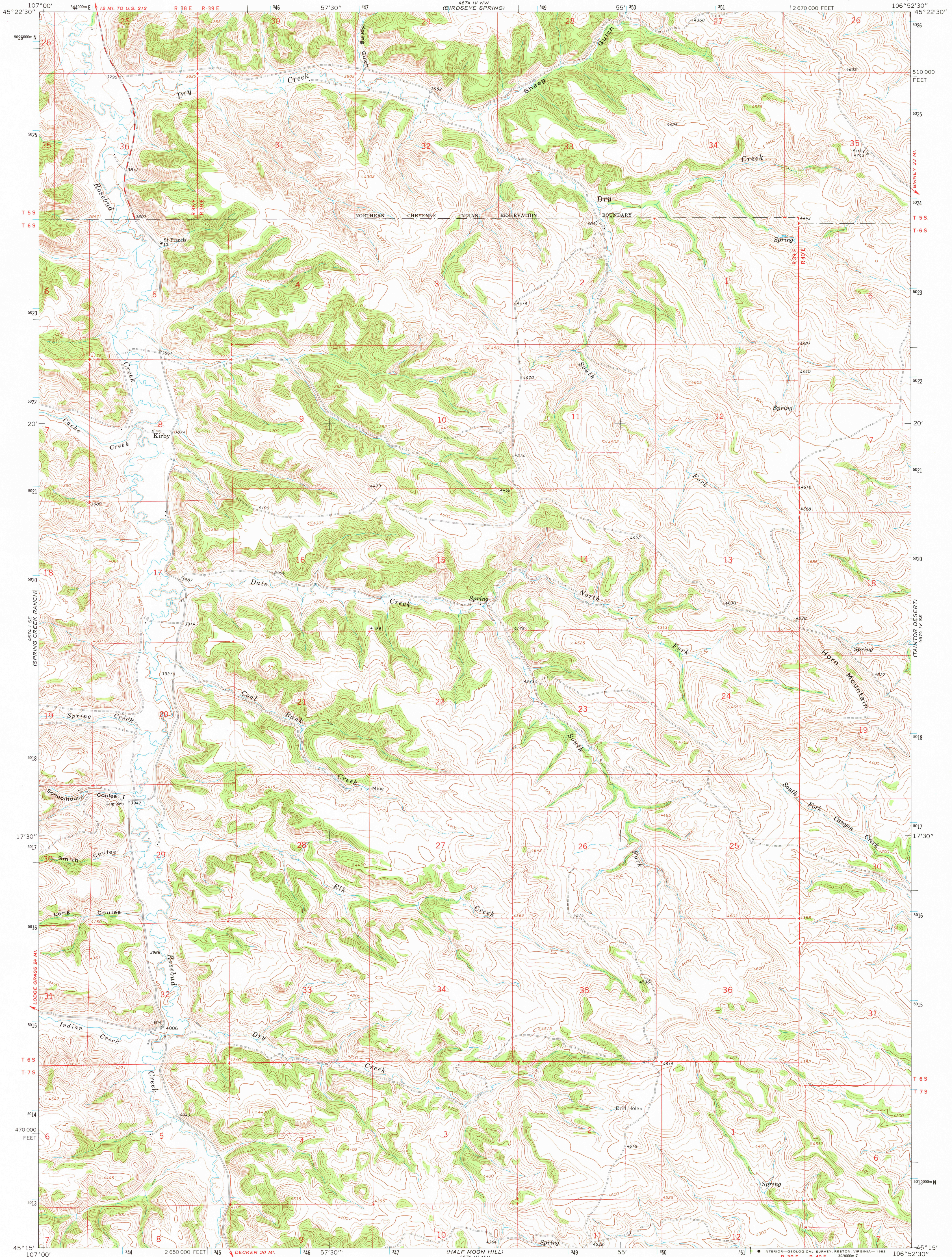
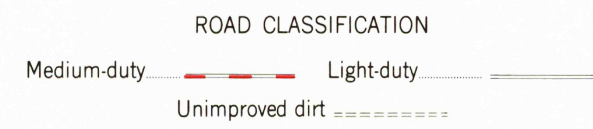
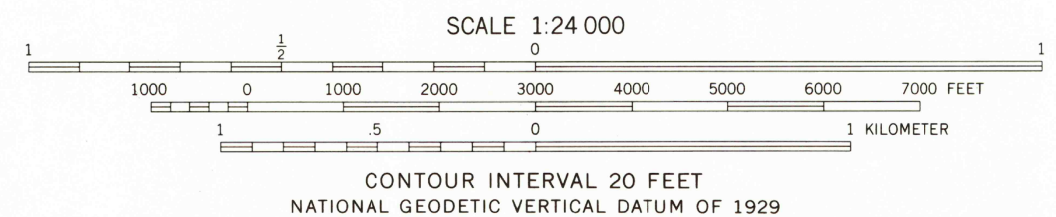
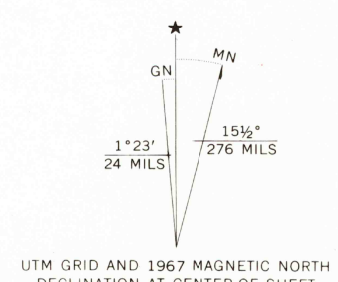


UNITED STATES  
DEPARTMENT OF THE INTERIOR  
GEOLOGICAL SURVEY

KIRBY QUADRANGLE  
MONTANA—BIG HORN CO.  
7.5 MINUTE SERIES (TOPOGRAPHIC)



Mapped, edited, and published by the Geological Survey  
Control by USGS and USC&GS  
Topography by photogrammetric methods from aerial  
photographs taken 1966. Field checked 1967  
Polyconic projection, 1927 North American datum  
10,000-foot grid based on Montana coordinate system,  
south zone  
1000-meter Universal Transverse Mercator grid ticks,  
zone 13, shown in blue  
Fine red dashed lines indicate selected fence lines  
To place on the predicted North American Datum 1983  
move the projection lines 7 meters north and  
50 meters east as shown by dashed corner ticks



THIS MAP COMPLIES WITH NATIONAL MAP ACCURACY STANDARDS  
FOR SALE BY U. S. GEOLOGICAL SURVEY, DENVER, COLORADO 80225, OR RESTON, VIRGINIA 22092  
A FOLDER DESCRIBING TOPOGRAPHIC MAPS AND SYMBOLS IS AVAILABLE ON REQUEST

KIRBY, MONT.  
N4515—W10652.5/7.5

1967  
PHOTOINSPECTED 1975  
DMA 4674 IV SW—SERIES V894

There may be private inholdings within the boundaries of  
the National or State reservations shown on this map  
Map photoinspected 1976  
No major culture or drainage changes observed

RETURN TO:  
USGS NMD HISTORICAL MAP ARCHIVES

NOV 1 1988