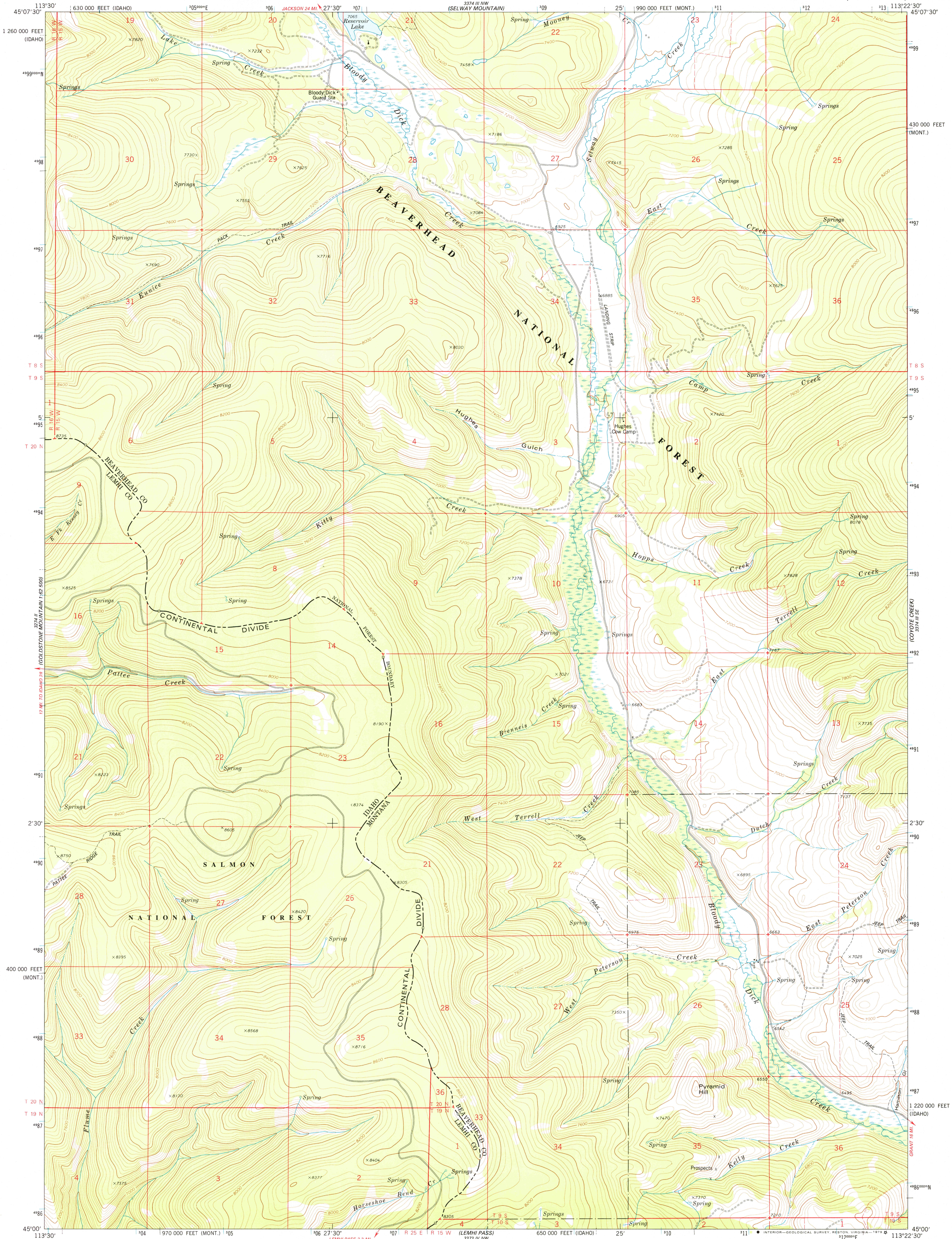


UNITED STATES
DEPARTMENT OF THE INTERIOR
GEOLOGICAL SURVEY



KITTY CREEK QUADRANGLE
MONTANA—IDAHO
7.5 MINUTE SERIES (TOPOGRAPHIC)



Mapped, edited, and published by the Geological Survey

Control by USGS, NOS/NOAA, and U. S. Forest Service

Topography by photogrammetric methods from aerial photographs

taken 1967. Field checked 1974. Map edited 1978

Projection: Montana coordinate system, south zone (Lambert conformal conic)

10,000-foot grid ticks based on Montana coordinate system, south

zone and Idaho coordinate system, central zone

1000-meter Universal Transverse Mercator grid ticks,

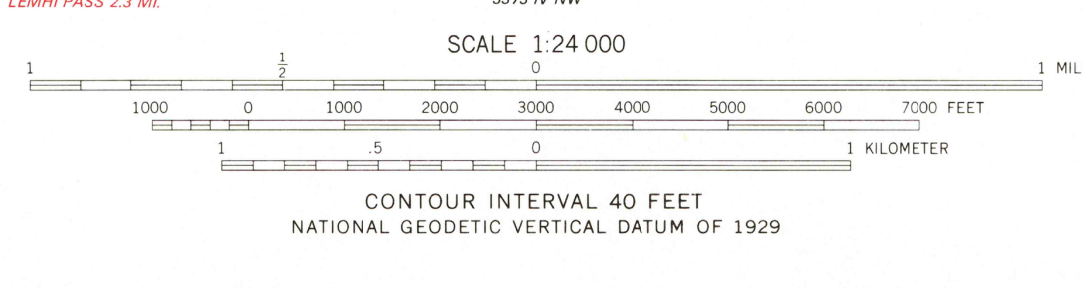
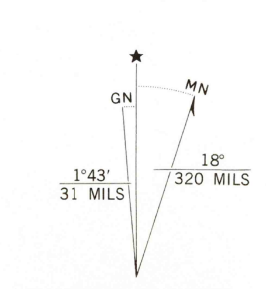
zone 12, shown in blue. 1927 North American datum

Fine red dashed lines indicate selected fence lines

Where omitted, land lines have not been established

There may be private inholdings within the boundaries of the

National or State reservations shown on this map



ROAD CLASSIFICATION	
Primary highway, hard surface	Light-duty road, hard or improved surface
Secondary highway, hard surface	Unimproved road
Interstate Route	U. S. Route
	State Route

KITTY CREEK, MONT.—IDAHO
N4500—W11322.5/7.5

USGS
Historical File
Topographic Division

1978
AMS 3374 III SW—SERIES V894

JUN 18 1979