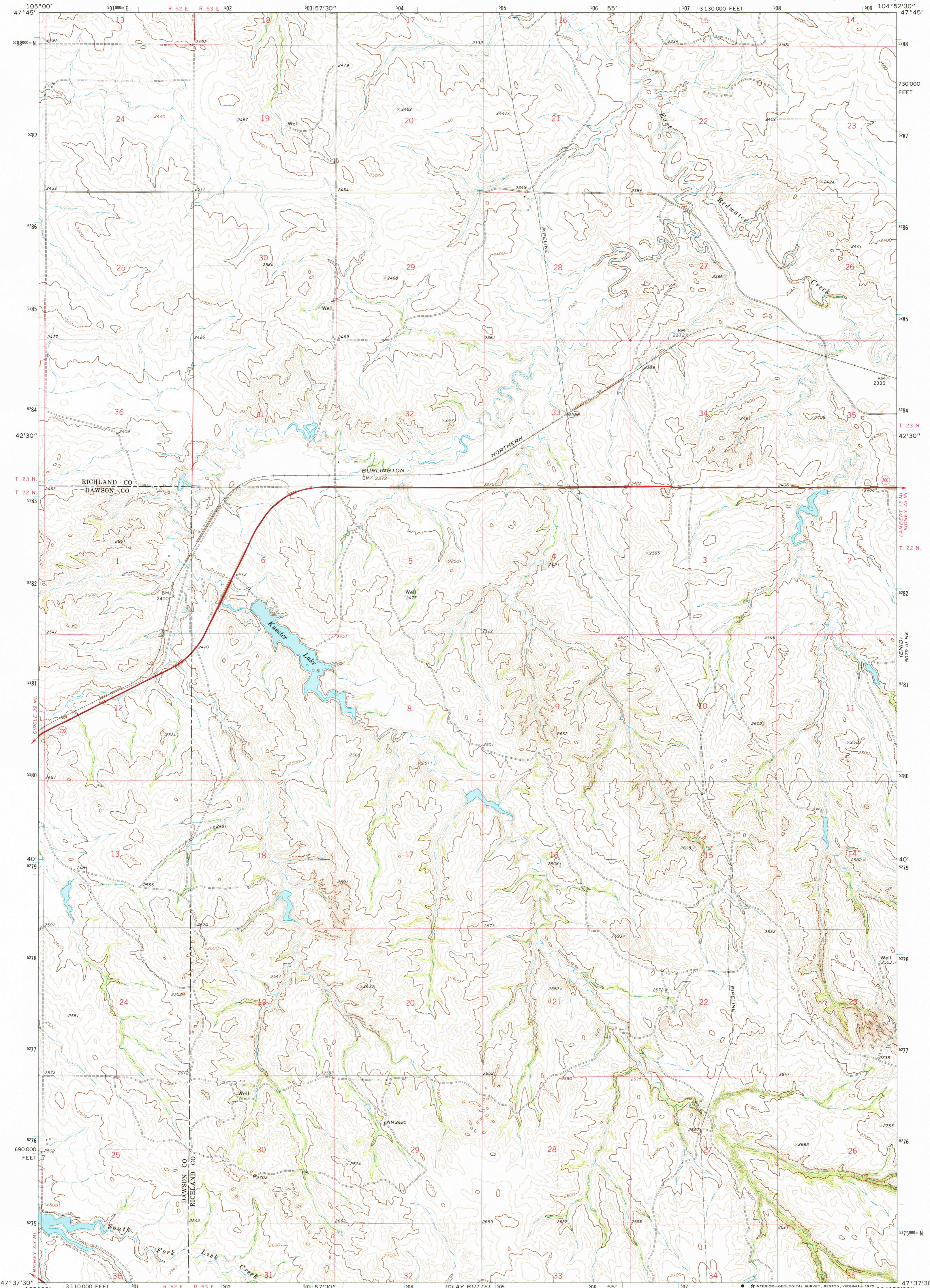
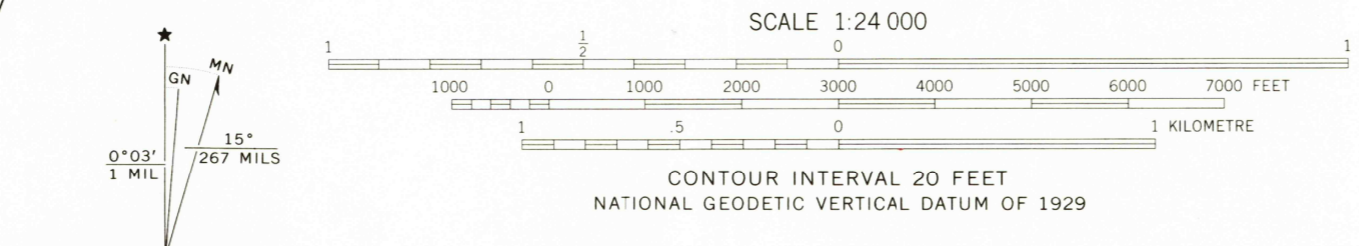


UNITED STATES  
DEPARTMENT OF THE INTERIOR  
GEOLOGICAL SURVEY

KUESTER LAKE QUADRANGLE  
MONTANA  
7.5 MINUTE SERIES (TOPOGRAPHIC)



Mapped, edited, and published by the Geological Survey  
Control by USGS and USC&GS  
Topography by photogrammetric methods from aerial photographs taken 1970. Field checked 1972  
Projection and 10,000-foot grid ticks: Montana coordinate system, central zone (Lambert conformal conic) 1000-metre Universal Transverse Mercator grid ticks, zone 13, shown in blue. 1927 North American datum  
Fine red dashed lines indicate selected fence lines



**ROAD CLASSIFICATION**  
Primary highway, hard surface ——— Light-duty road, hard or improved surface ———  
Secondary highway, hard surface ——— Unimproved road ———  
Interstate Route ——— U. S. Route ——— State Route ———



THIS MAP COMPLIES WITH NATIONAL MAP ACCURACY STANDARDS  
FOR SALE BY U.S. GEOLOGICAL SURVEY, DENVER, COLORADO 80225, OR RESTON, VIRGINIA 22092  
A FOLDER DESCRIBING TOPOGRAPHIC MAPS AND SYMBOLS IS AVAILABLE ON REQUEST

USGS  
HISTORICAL FILE  
TOPOGRAPHIC DIVISION  
KUESTER LAKE, MONT.  
N4737.5—W10452.5/7.5  
1972  
AMS 5079 III NW—SERIES V384

SEP 25 1972

2900