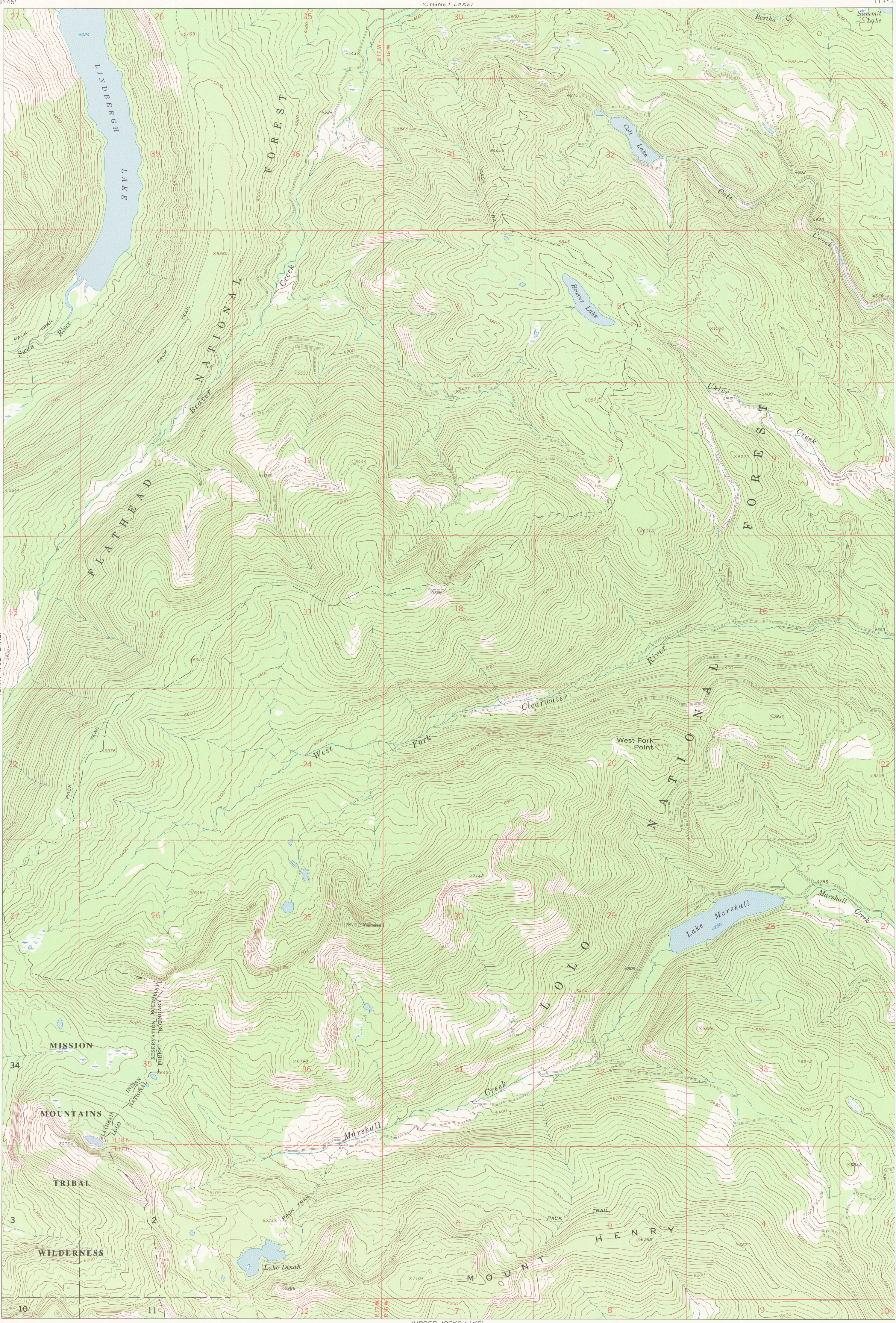


LAKE MARSHALL QUADRANGLE
FLATHEAD INDIAN RESERVATION
7.5 MINUTE SERIES (TOPOGRAPHIC)

UNITED STATES
DEPARTMENT OF THE INTERIOR
BUREAU OF INDIAN AFFAIRS

113°45'
47°22'30"

113°37'30"
47°22'30"

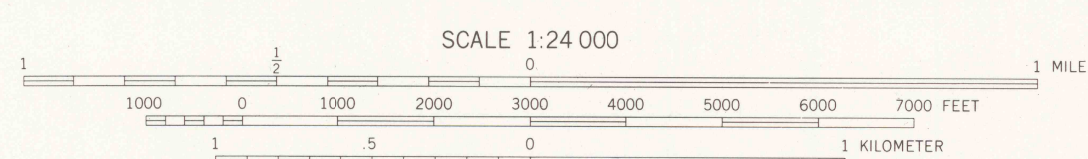


47°15'
113°45'

47°15'
113°37'30"

LEGEND

ROADS	BOUNDARIES
Paved road	County
Surfaced light duty or improved dirt road	Reservation
Unimproved dirt road	Tribal wilderness
Four wheel drive trail	Tribal Primitive Area
Route designation shield	Power transmission line
RAILROADS	CFI Plot location
Single track	Aerial photo centers 1983 & 1981 flight
LAND LINES	Indicated corner
Surveyed	Found corner
Protected	
Fence lines	

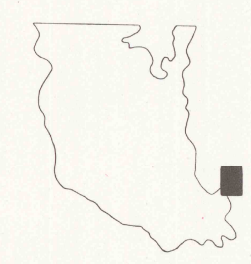


CONTOUR INTERVAL 40 FEET
DATUM IS MEAN SEA LEVEL
NATIONAL GEODETIC VERTICAL DATUM OF 1929
CONTROL BY USGS AND NOS/NOAA

Prepared by the Geological Survey for
the Bureau of Indian Affairs, Flathead Agency

Compiled in 1989 from USGS 1:24,000-scale quadrangle dated 1965
Revised from aerial photographs taken 1977 and other source data provided by BIA

1989 MAGNETIC NORTH
DECLINATION AT CENTER OF SHEET IS 17°W



RETURN TO:
USGS NMD HISTORICAL MAP ARCHIVES

LAKE MARSHALL, MONT.
FLATHEAD INDIAN RESERVATION
MISSOULA CO.