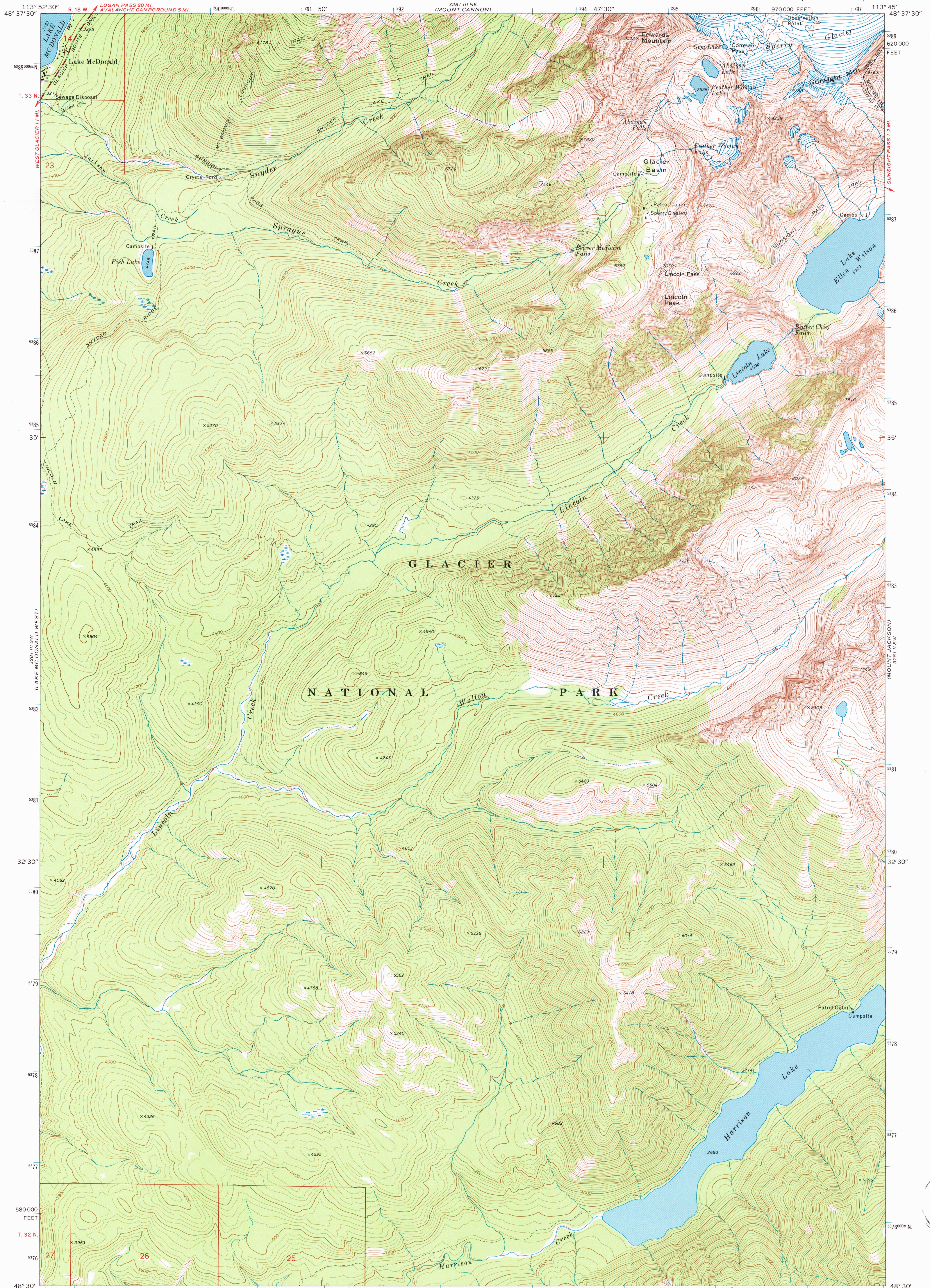
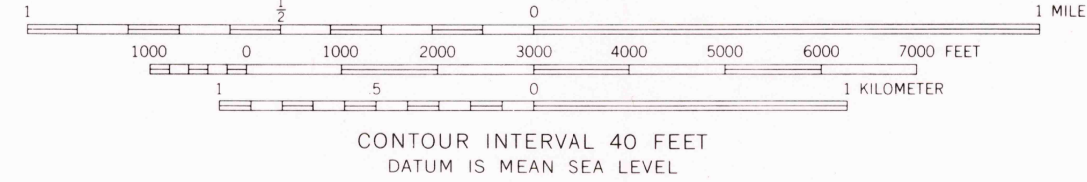
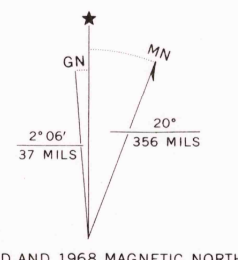


UNITED STATES
DEPARTMENT OF THE INTERIOR
GEOLOGICAL SURVEY

LAKE MC DONALD EAST QUADRANGLE
MONTANA
7.5 MINUTE SERIES (TOPOGRAPHIC)



580 000 FEET
T. 32 N.
48° 30' 113° 52' 30" 340 000 FEET
Mapped, edited, and published by the Geological Survey
Control by USGS and USC&GS
Topography by photogrammetric methods from aerial photographs taken 1966. Field checked 1968
Polyconic projection. 1927 North American datum
10,000-foot grid based on Montana coordinate system, north zone
1000-meter Universal Transverse Mercator grid ticks, zone 12, shown in blue
Where omitted, land lines have not been established



ROAD CLASSIFICATION
Secondary highway, all weather, Light-duty road, all weather, hard surface, improved surface



LAKE MC DONALD EAST, MONT.
N4830-W11345/7.5

THIS MAP COMPLIES WITH NATIONAL MAP ACCURACY STANDARDS
FOR SALE BY U.S. GEOLOGICAL SURVEY, DENVER, COLORADO 80225, OR WASHINGTON, D.C. 20542
A FOLDER DESCRIBING TOPOGRAPHIC MAPS AND SYMBOLS IS AVAILABLE ON REQUEST

1968
AMS 3281 III SE-SERIES V894

USGS NMD HISTORICAL MAP
APR 19 1988
REC'D FILE COPY