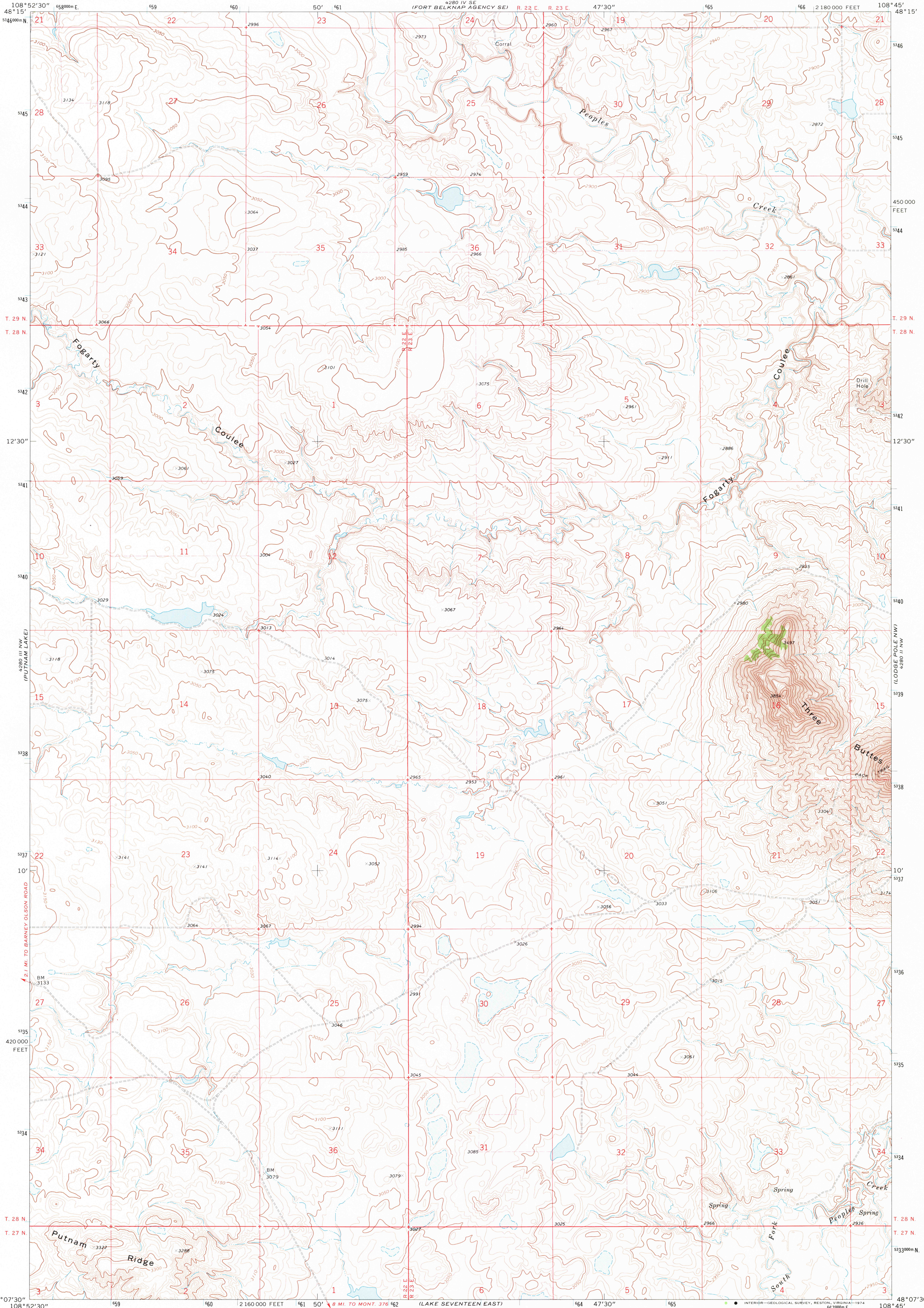


UNITED STATES  
DEPARTMENT OF THE INTERIOR  
GEOLOGICAL SURVEY

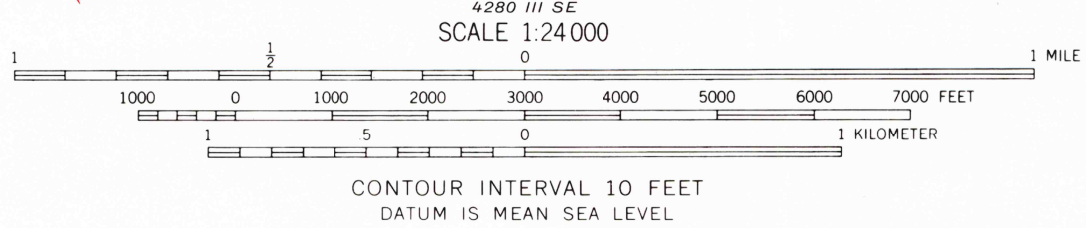
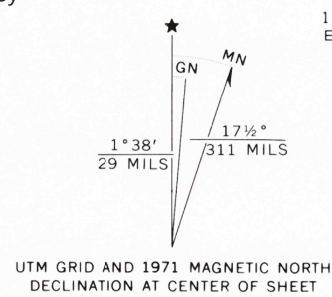
LAKE SEVENTEEN NE QUADRANGLE  
MONTANA—BLAINE CO.  
7.5 MINUTE SERIES (TOPOGRAPHIC)



Mapped, edited, and published by the Geological Survey as part of the Department of the Interior program for the development of the Missouri River Basin Control by USGS and USC&GS

Topography by photogrammetric methods from aerial photographs taken 1970. Field checked 1971  
Projection and 10,000-foot grid ticks: Montana coordinate system, north zone (Lambert conformal conic) 1000-meter Universal Transverse Mercator grid ticks zone 12, shown in blue. 1927 North American datum

Fine red dashed lines indicate selected fence lines  
Entire area lies within the boundary of the Fort Belknap Indian Reservation



ROAD CLASSIFICATION

Primary highway, hard surface	Light-duty road, hard or improved surface
Secondary highway, hard surface	Unimproved road
Interstate Route	U. S. Route
	State Route



USGS  
Historical File  
Topographic Division

LAKE SEVENTEEN NE, MONT.  
N4807.5—W10845/7.5

1971

AMS 4280 III NE SERIES V894

JUN 25 1974

2730