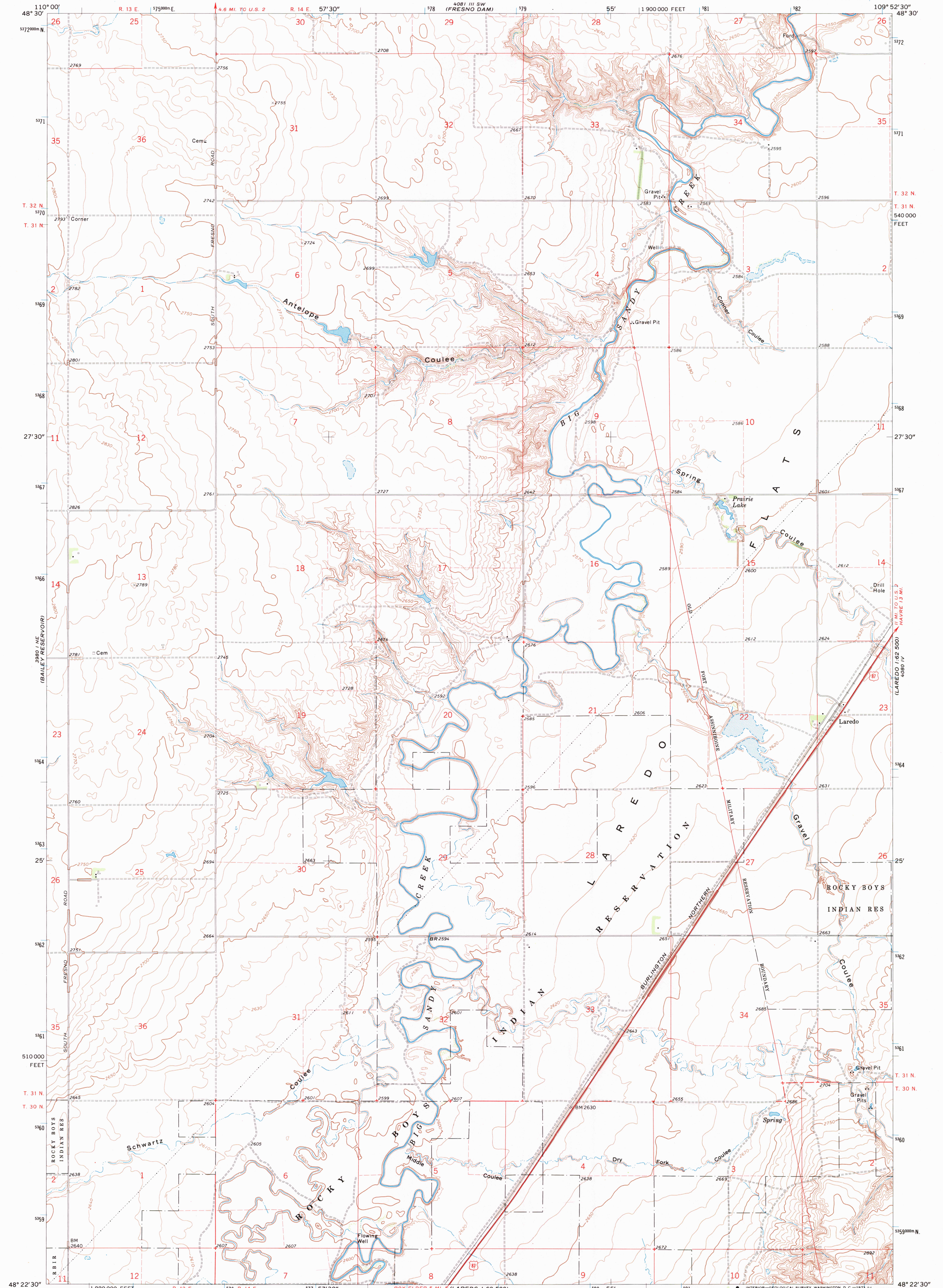


388 1/2 SE  
(KREMLIN)

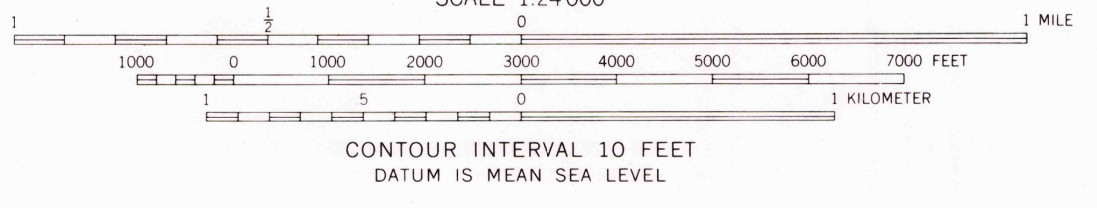
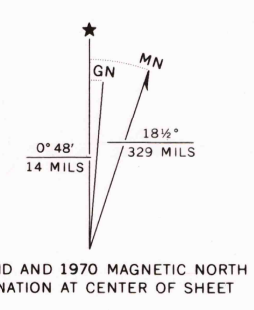
UNITED STATES  
DEPARTMENT OF THE INTERIOR  
GEOLOGICAL SURVEY

LAREDO QUADRANGLE  
MONTANA—HILL CO.  
7.5 MINUTE SERIES (TOPOGRAPHIC)

388 1/2 SE  
(NEARON PARK)



Mapped, edited, and published by the Geological Survey as part of the Department of the Interior program for the development of the Missouri River Basin Control by USGS and USC&GS  
Topography by photogrammetric methods from aerial photographs taken 1969. Field checked 1970  
Polyconic projection. 1927 North American datum 10,000-foot grid based on Montana coordinate system, north zone  
1000-meter Universal Transverse Mercator grid ticks, zone 12, shown in blue  
Fine red dashed lines indicate selected fence lines



ROAD CLASSIFICATION

Primary highway, hard surface	Light-duty road, hard or improved surface
Secondary highway, hard surface	Unimproved road
Interstate Route	U. S. Route
	State Route

THIS MAP COMPLIES WITH NATIONAL MAP ACCURACY STANDARDS  
FOR SALE BY U. S. GEOLOGICAL SURVEY, DENVER, COLORADO 80225, OR WASHINGTON, D. C. 20242  
A FOLDER DESCRIBING TOPOGRAPHIC MAPS AND SYMBOLS IS AVAILABLE ON REQUEST

LAREDO, MONT.  
NW 1/4 LAREDO 15 QUADRANGLE  
N4822.5-W10952.5/7.5  
1970

AMS 4080 IV NW—SERIES V894

RETURN TO:  
USGS AND HISTORICAL MAP ARCHIVES