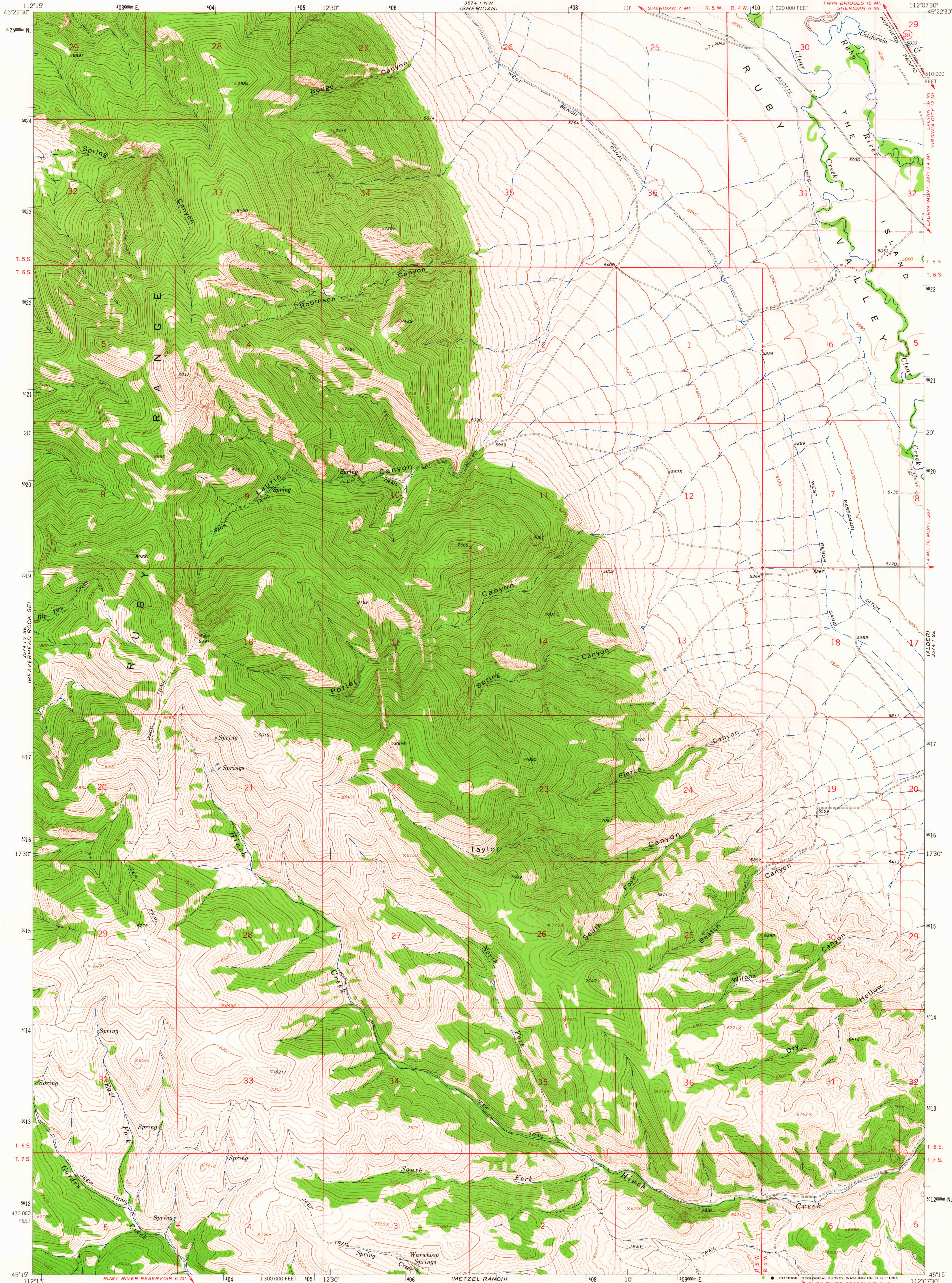
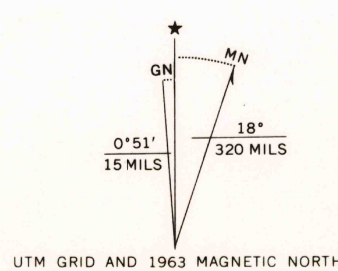


UNITED STATES
DEPARTMENT OF THE INTERIOR
GEOLOGICAL SURVEY

LAURIN CANYON QUADRANGLE
MONTANA-MADISON CO.
7.5 MINUTE SERIES (TOPOGRAPHIC)



Mapped, edited, and published by the Geological Survey as part of the Department of the Interior program for the development of the Missouri River Basin. Control by USGS and USC&GS. Topography by photogrammetric methods from aerial photographs taken 1961. Field checked 1963. Polyconic projection. 1927 North American datum. 10,000-foot grid based on Montana coordinate system, south zone. 1000-meter Universal Transverse Mercator grid ticks, zone 12, shown in blue. Fine red dashed lines indicate selected fence lines.



SCALE 1:24,000
CONTOUR INTERVAL 40 FEET
DOTTED LINES REPRESENT 20-FOOT CONTOURS
DATUM IS MEAN SEA LEVEL
THIS MAP COMPLIES WITH NATIONAL MAP ACCURACY STANDARDS
FOR SALE BY U.S. GEOLOGICAL SURVEY, DENVER 25, COLORADO OR WASHINGTON 25, D.C.
A FOLDER DESCRIBING TOPOGRAPHIC MAPS AND SYMBOLS IS AVAILABLE ON REQUEST



ROAD CLASSIFICATION
Medium-duty ——— Light-duty ———
Unimproved dirt ———
State Route

U.S.G.S. FILE COPY TOPOGRAPHIC DIVISION
LAURIN CANYON, MONT.
N4515-W11207.5/7.5
1963
AMS 3574 1 SW-SERIES V894

USGS
Historical File
Topographic Division

NOV 23 1964