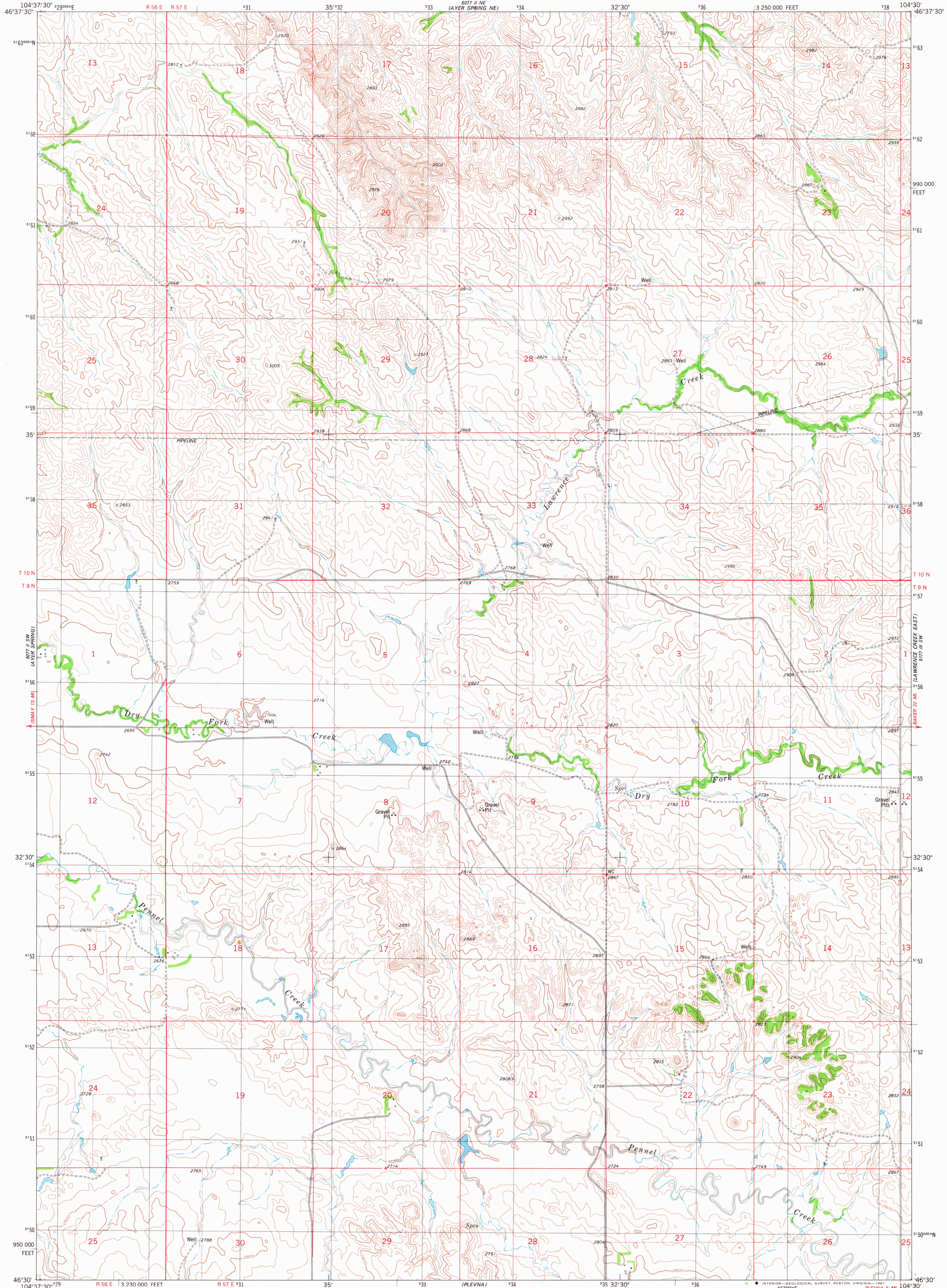


UNITED STATES
DEPARTMENT OF THE INTERIOR
GEOLOGICAL SURVEY

LAWRENCE CREEK WEST QUADRANGLE
MONTANA—FALLON CO.
7.5 MINUTE SERIES (TOPOGRAPHIC)



Mapped, edited, and published by the Geological Survey

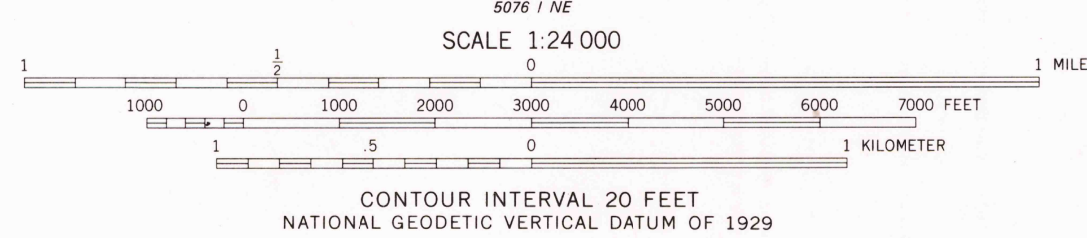
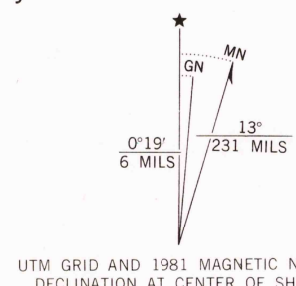
Control by USGS and NOS/NOAA

Topography by photogrammetric methods from aerial photographs taken 1974. Field checked 1976. Map edited 1981

Projection and 10,000-foot grid ticks: Montana coordinate system, south zone (Lambert conformal conic) 1000-meter Universal Transverse Mercator grid, zone 13 1927 North American datum

To place on the predicted North American Datum 1983 move the projection lines 4 meters north and 41 meters east as shown by dashed corner ticks

Fine red dashed lines indicate selected fence lines



| ROAD CLASSIFICATION | |
|---------------------------------|---|
| Primary highway, hard surface | Light-duty road, hard or improved surface |
| Secondary highway, hard surface | Unimproved road |
| Interstate Route | U. S. Route |
| | State Route |



LAWRENCE CREEK WEST, MONT.
N4630-W10430/7.5

1981

DMA 5077 II SE-SERIES V894

DEC 23 1981

1950

RETURN TO:
USGS AND HISTORICAL MAP ARCHIVES