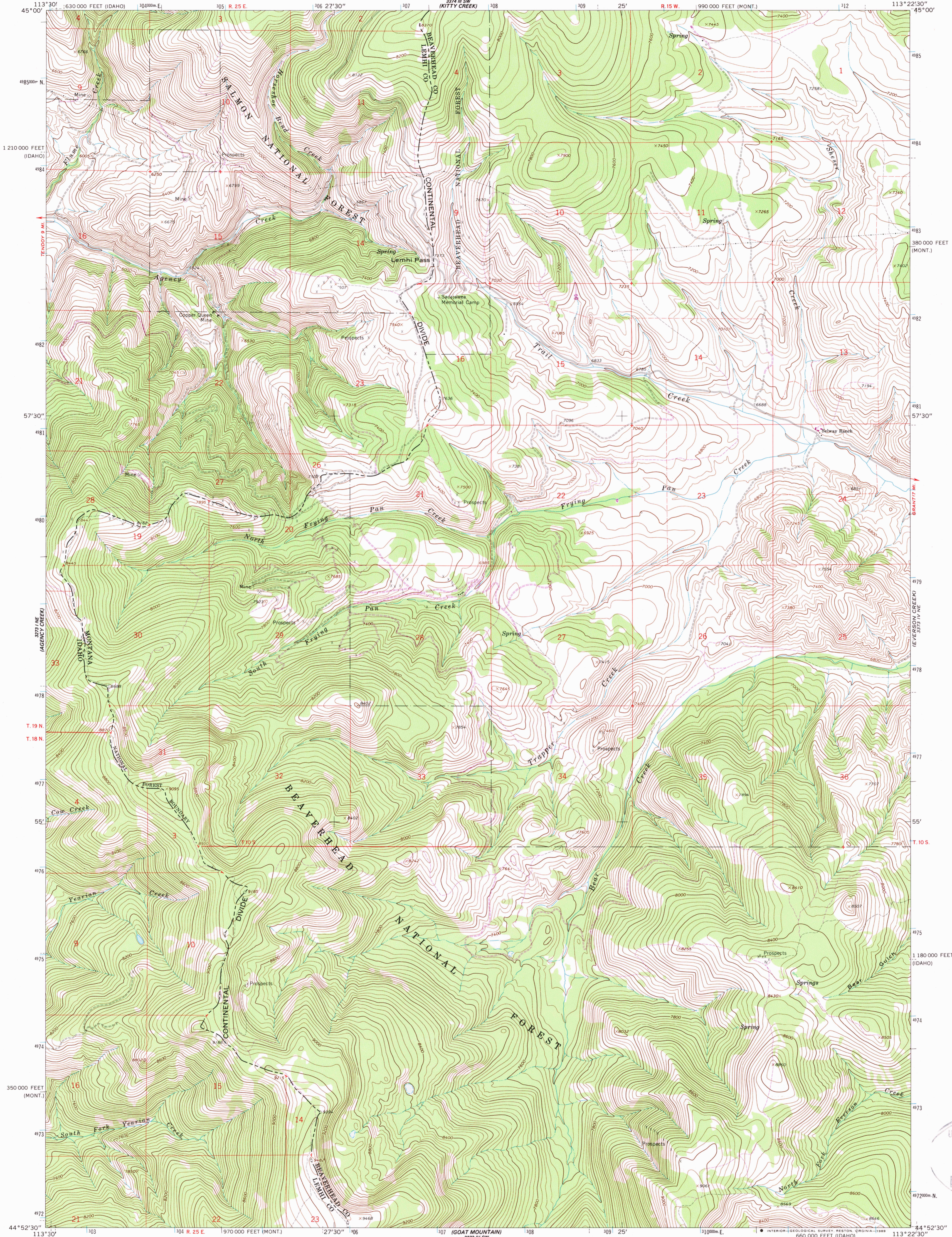
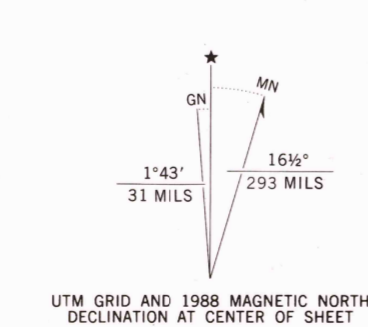


UNITED STATES
DEPARTMENT OF THE INTERIOR
GEOLOGICAL SURVEY

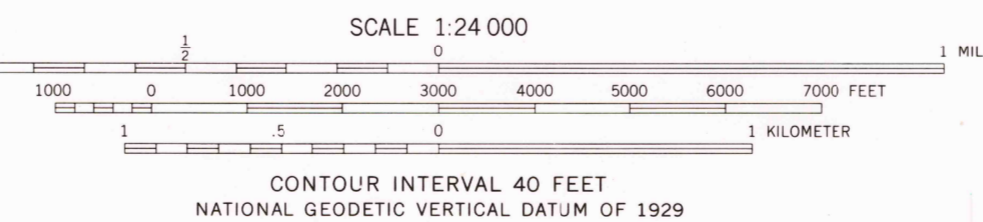
LEMHI PASS QUADRANGLE
MONTANA-IDAHO
7.5 MINUTE SERIES (TOPOGRAPHIC)



Mapped, edited, and published by the Geological Survey
Control by USGS and NOS/NOAA
Topography by photogrammetric methods from aerial
photographs taken 1964. Field checked 1965
Polyconic projection. 1927 North American Datum
10,000-foot grids based on Montana coordinate system,
south zone, and Idaho coordinate system,
central zone
1000-meter Universal Transverse Mercator grid ticks,
zone 12, shown in blue
Fine red dashed lines indicate selected fence lines
Where omitted, land lines have not been established
There may be private inholdings within the boundaries of
the National or State reservations shown on this map



To place on the predicted North American
Datum 1983 move the projection lines
12 meters north and 70 meters east
as shown by dashed corner ticks



THIS MAP COMPLIES WITH NATIONAL MAP ACCURACY STANDARDS
FOR SALE BY U.S. GEOLOGICAL SURVEY
DENVER, COLORADO 80225, OR RESTON, VIRGINIA 22092
A FOLDER DESCRIBING TOPOGRAPHIC MAPS AND SYMBOLS IS AVAILABLE ON REQUEST



ROAD CLASSIFICATION
Light-duty ————— Unimproved dirt —————

LEMHI PASS, MONT.-IDAHO
44113-H4-TF-024

1965
PHOTOREVISED 1988
DMA 3373 IV NW-SERIES V894.

Revisions shown in purple and woodland
compiled from aerial photographs taken 1984
and other source data. Partial field check
by U.S. Forest Service. Map edited 1988

