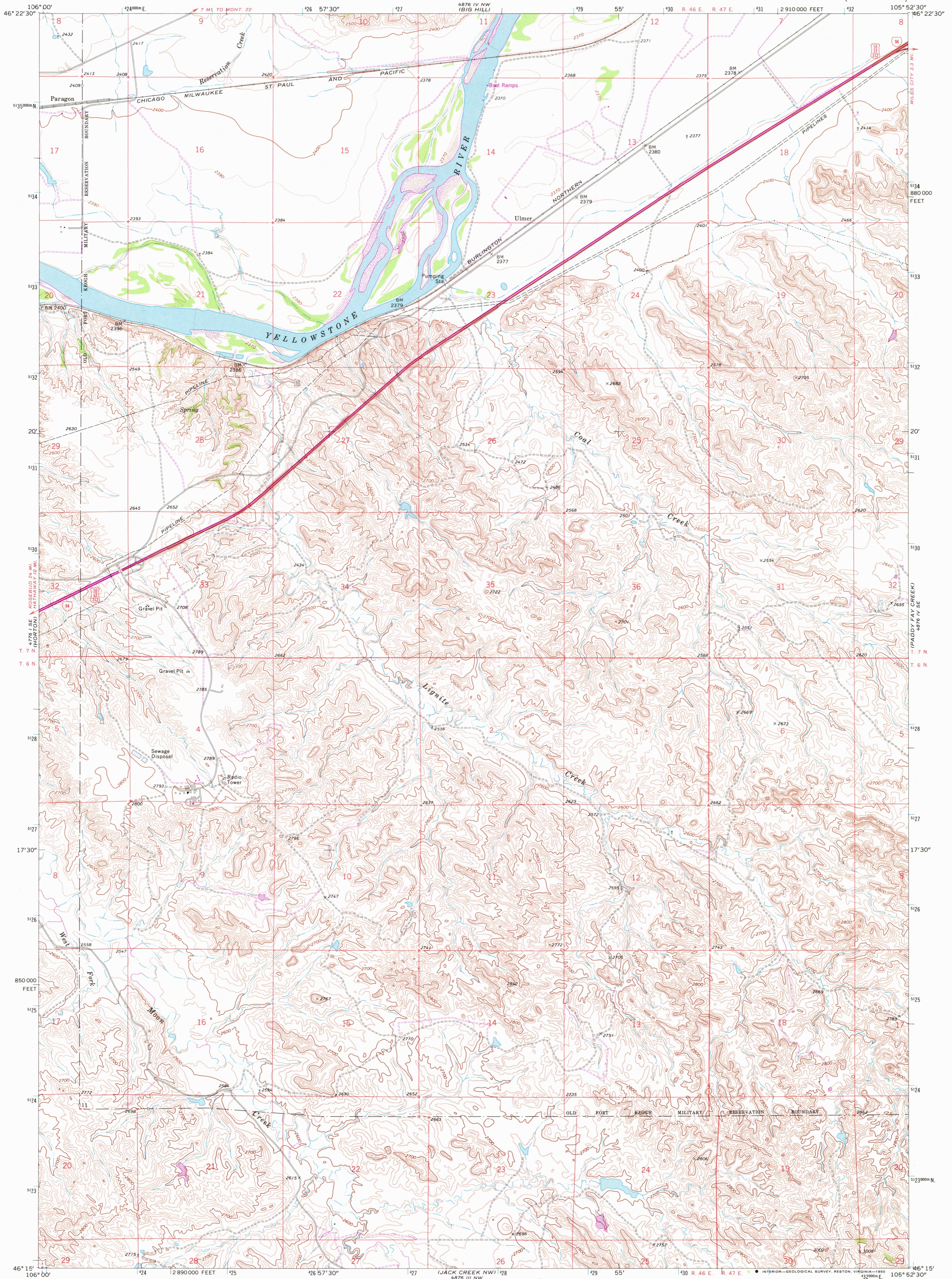
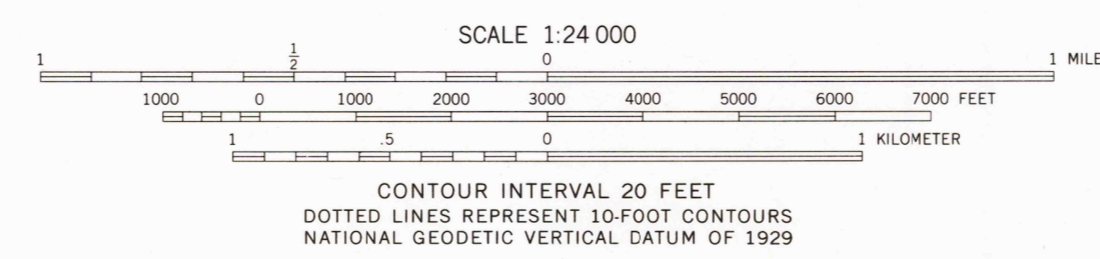
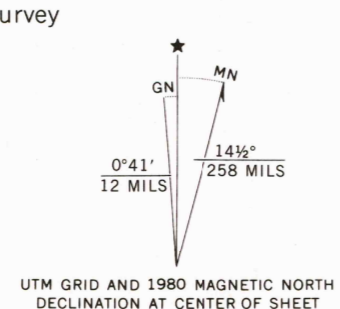


UNITED STATES  
DEPARTMENT OF THE INTERIOR  
GEOLOGICAL SURVEY

LIGNITE CREEK QUADRANGLE  
MONTANA—CUSTER CO.  
7.5 MINUTE SERIES (TOPOGRAPHIC)



Maped, edited, and published by the Geological Survey  
Control by USGS and NOS/NOAA  
Topography by photogrammetric methods from aerial photographs taken 1966. Field checked 1968  
Polyconic projection. 1927 North American datum 10,000-foot grid based on Montana coordinate system, south zone  
1000-meter Universal Transverse Mercator grid ticks, zone 13, shown in blue  
Fine red dashed lines indicate selected fence lines  
To place on the predicted North American Datum 1983 move the projection lines 6 meters north and 45 meters east as shown by dashed corner ticks



**ROAD CLASSIFICATION**  
Primary highway, all weather, hard surface  
Light-duty road, all weather, improved surface  
Unimproved road, fair or dry weather  
Interstate Route  
U. S. Route

THIS MAP COMPLIES WITH NATIONAL MAP ACCURACY STANDARDS  
FOR SALE BY U. S. GEOLOGICAL SURVEY, DENVER, COLORADO 80225, OR RESTON, VIRGINIA 22092  
A FOLDER DESCRIBING TOPOGRAPHIC MAPS AND SYMBOLS IS AVAILABLE ON REQUEST

QUADRANGLE LOCATION  
Revisions shown in purple compiled from aerial photographs taken 1978 and other source data. This information not field checked. Map edited 1980  
**LIGNITE CREEK, MONT.**  
N4615-W10552.5/7.5  
1968  
PHOTOREVISED 1980  
DMA 4876 IV SW—SERIES V894

FEB 3 1981  
2050

USGS  
Historical File  
Topographic Division