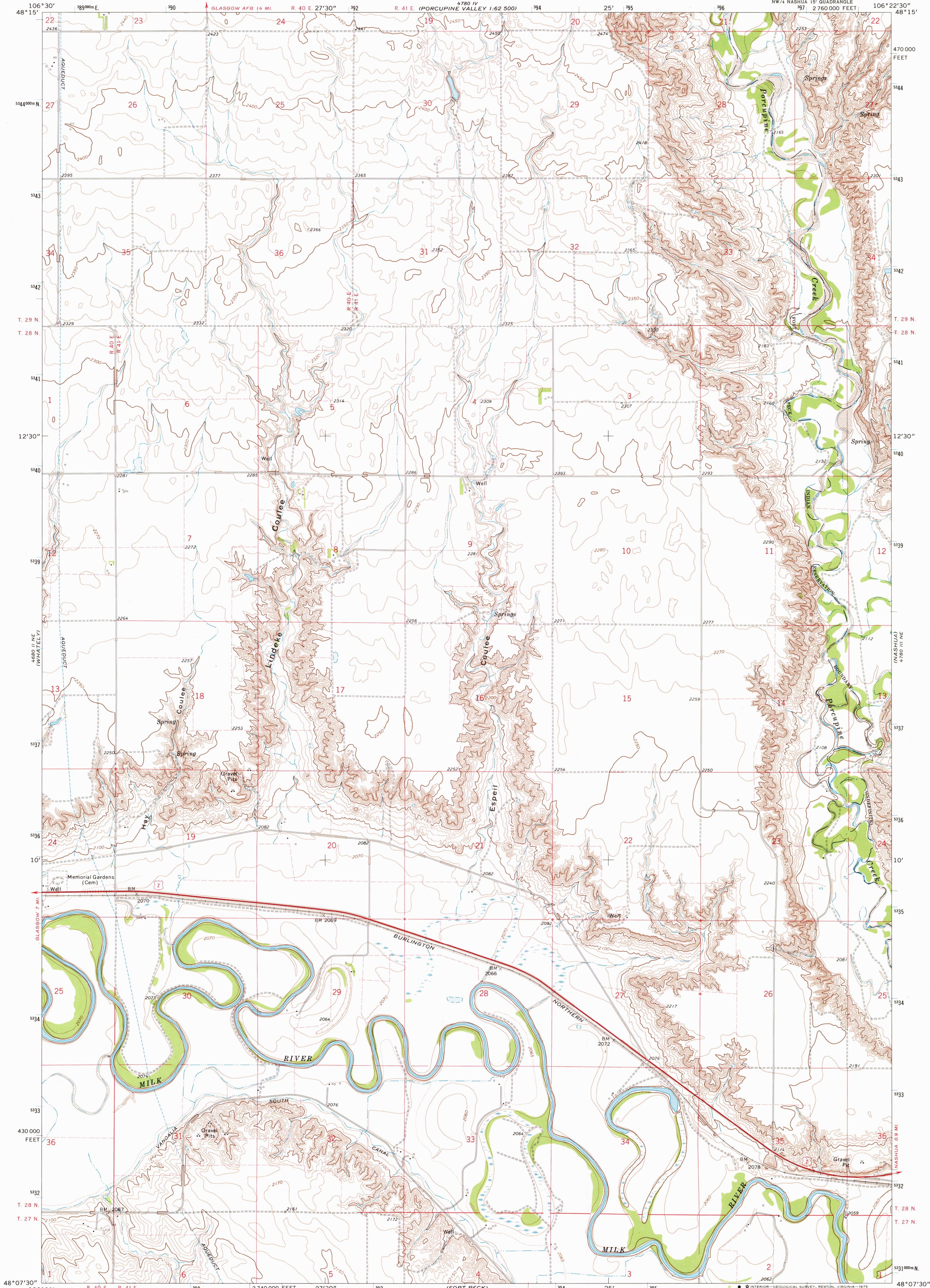
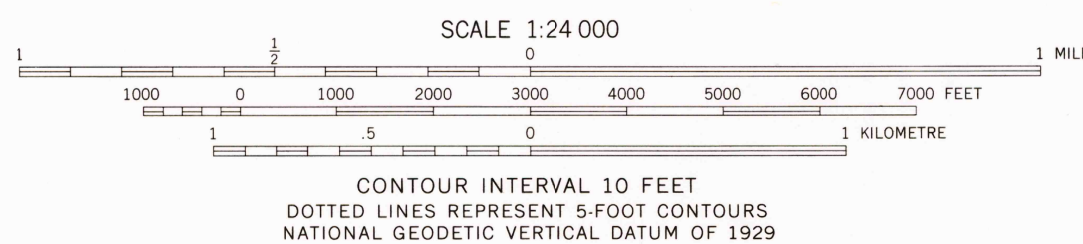
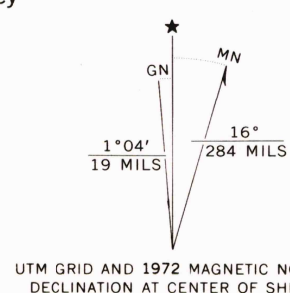


UNITED STATES  
DEPARTMENT OF THE INTERIOR  
GEOLOGICAL SURVEY

LINDEKE COULEE QUADRANGLE  
MONTANA—VALLEY CO.  
7.5 MINUTE SERIES (TOPOGRAPHIC)



Mapped, edited, and published by the Geological Survey  
Control by USGS and USC&GS  
Topography by photogrammetric methods from aerial  
photographs taken 1971. Field checked 1972  
Projection and 10,000-foot grid ticks: Montana  
coordinate system, north zone (Lambert conformal conic)  
1000-metre Universal Transverse Mercator grid ticks,  
zone 13, shown in blue. 1927 North American datum  
Fine red dashed lines indicate selected fence lines



ROAD CLASSIFICATION  
Primary highway, hard surface  
Secondary highway, hard surface  
Light-duty road, hard or improved surface  
Unimproved road  
Interstate Route  
U.S. Route  
State Route



LINDEKE COULEE, MONT.  
NW 1/4 NASHUA 15' QUADRANGLE  
N4807.5-W10622.5/7.5

1972  
AMS 4780 III NW—SERIES V894

SEP 5 1975

2150  
150  
50  
2350