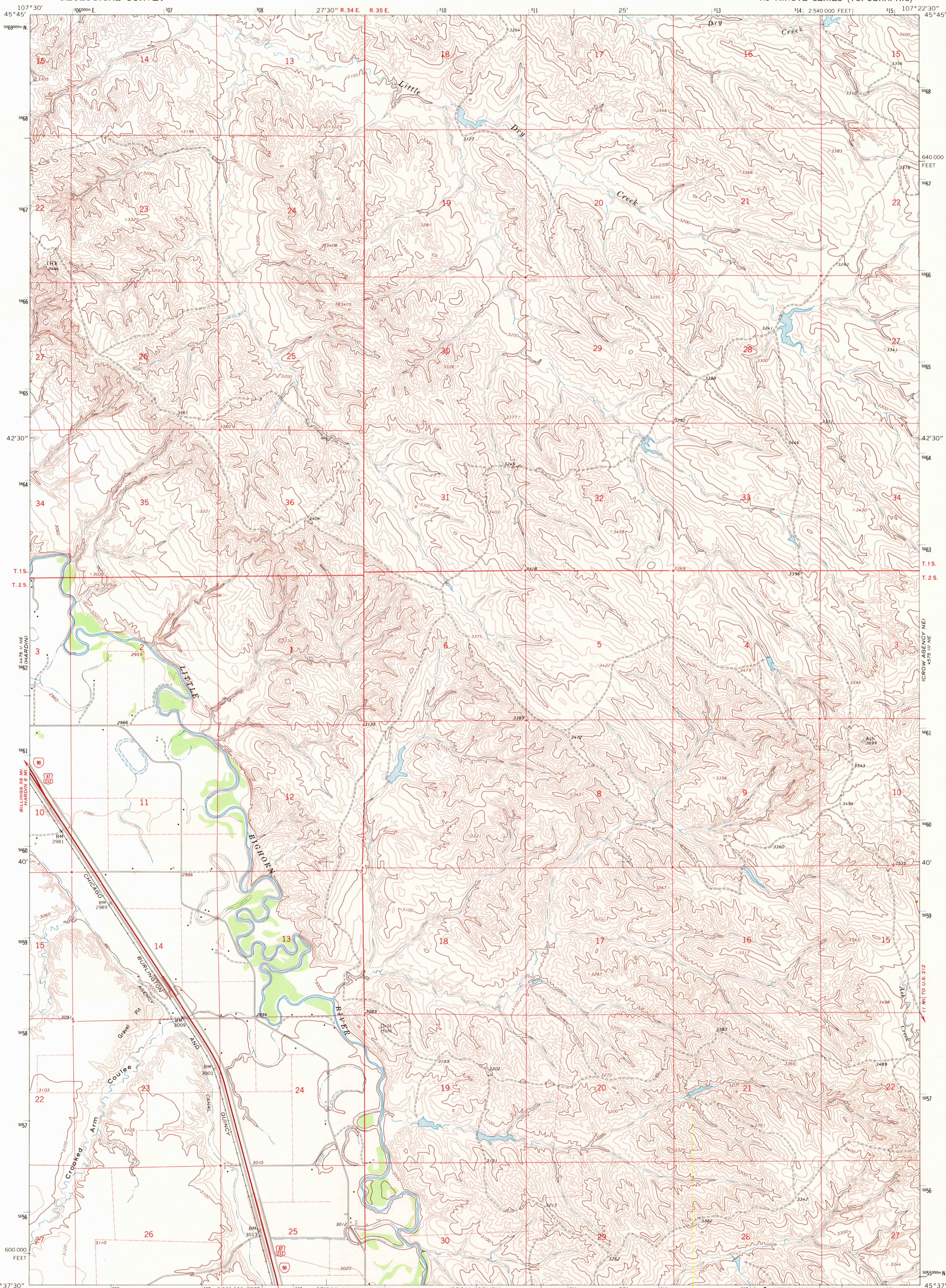
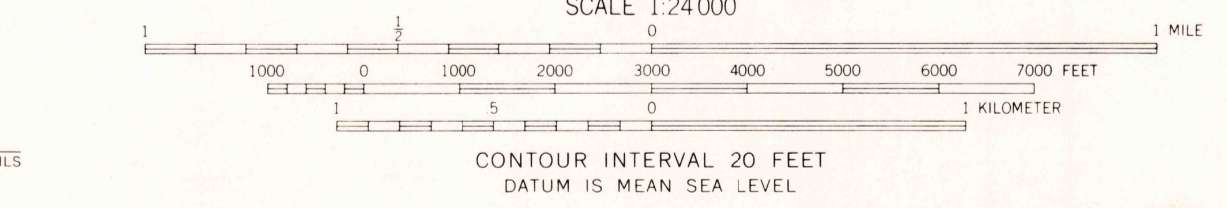


UNITED STATES
DEPARTMENT OF THE INTERIOR
GEOLOGICAL SURVEY

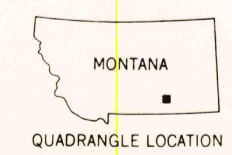
LITTLE DRY CREEK QUADRANGLE
MONTANA—BIG HORN CO.
7.5 MINUTE SERIES (TOPOGRAPHIC)



Maped, edited, and published by the Geological Survey
Control by USGS and USC&GS
Topography by photogrammetric methods from aerial
photographs taken 1966. Field checked 1967
Polyconic projection. 1927 North American datum
10,000-foot grid based on Montana coordinate system,
south zone
1000-meter Universal Transverse Mercator grid ticks,
zone 13, shown in blue
Fine red dashed lines indicate selected fence lines
Entire area lies within the boundary
of the Crow Indian Reservation



ROAD CLASSIFICATION
Heavy-duty ——— Light-duty ———
Unimproved dirt ———
Interstate Route ——— U. S. Route ———



U.S.G.S. LITTLE DRY CREEK, MONT.
N4537.5—W10722.5/7.5

FILE COPY
TOPOGRAPHIC DIVISION
AMS 4575 III NW—SERIES V894

2335
FEB 10 1971