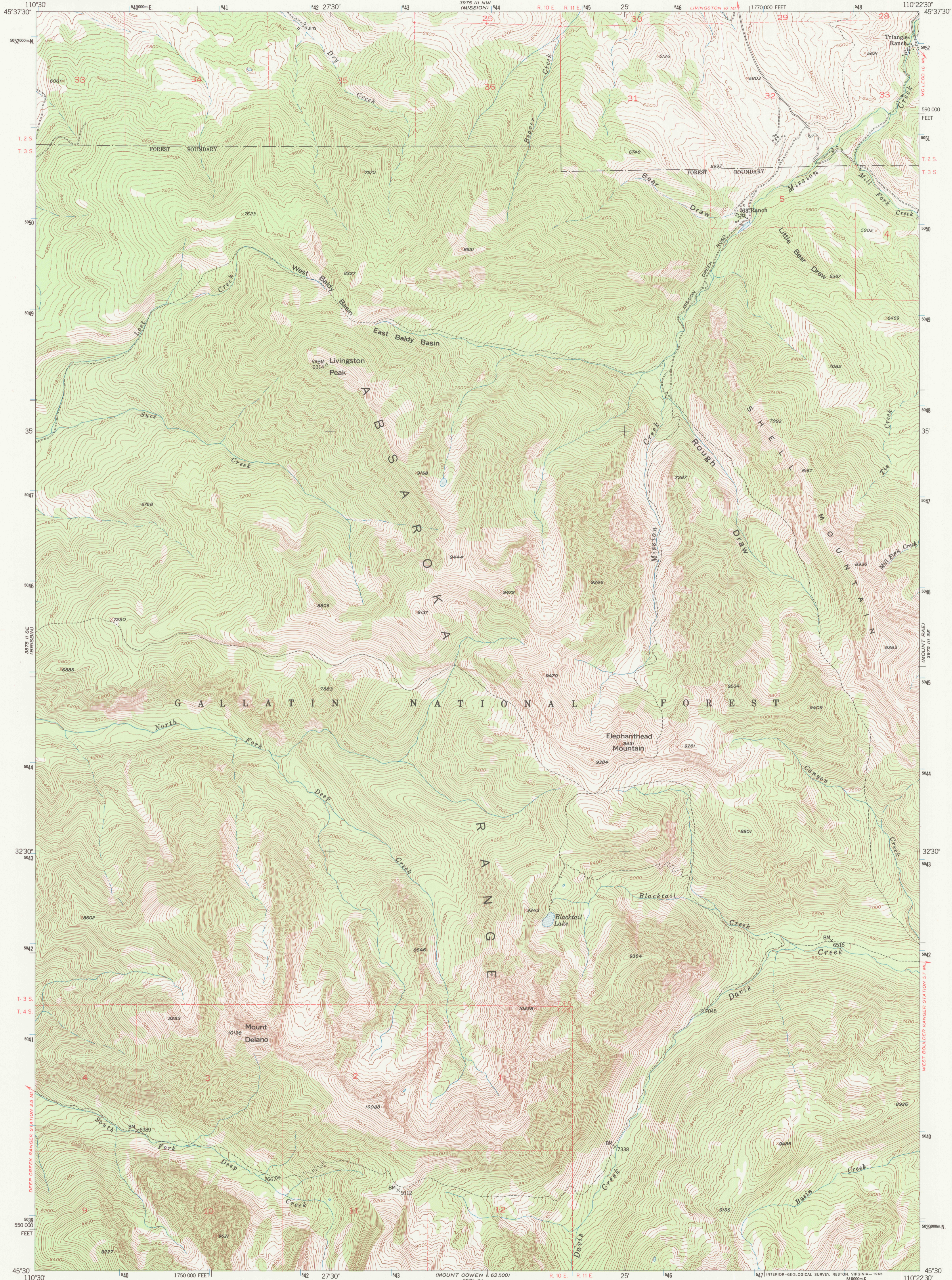




U.S. DEPARTMENT OF THE INTERIOR
U.S. GEOLOGICAL SURVEY

LIVINGSTON PEAK QUADRANGLE
MONTANA-PARK CO.
7.5 MINUTE SERIES (TOPOGRAPHIC)

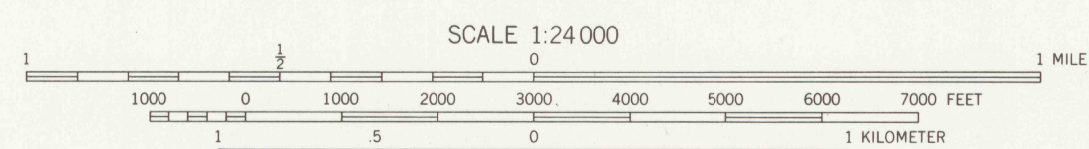
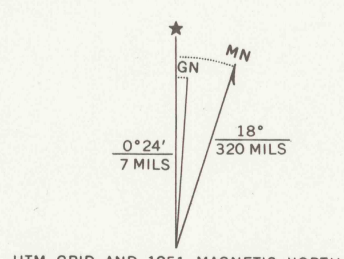


Mapped, edited, and published by the Geological Survey as part of the Department of the Interior program for the development of the Missouri River Basin Control by USGS and USC&GS

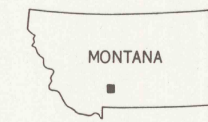
Topography from aerial photographs by multiplex methods Aerial photographs taken 1948. Field check 1951 Polyconic projection. 1927 North American datum 10,000-foot grid based on Montana coordinate system, south zone

Dashed land lines indicate approximate locations Land lines unsurveyed in T. 3 S. - R. 10 E., T. 4 S. - R. 11 E., and in part of T. 3 S. - R. 11 E.

1000-meter Universal Transverse Mercator grid ticks, zone 12, shown in blue



CONTOUR INTERVAL 40 FEET
DATUM IS MEAN SEA LEVEL



QUADRANGLE LOCATION

ROAD CLASSIFICATION

Heavy-duty	4 LANE 16 LANE	Light-duty	2 LANE 16 LANE
Medium-duty	4 LANE 16 LANE	Unimproved dirt	-----
U. S. Route	(Red circle)	State Route	(Red square)

LIVINGSTON PEAK, MONT.
N4530-W11022.5/7.5

1951

AMS 3975 III SW-SERIES V894

U.S. GEOLOGICAL SURVEY
LIBRARY
MAY 23 1999
RESTON, VA

