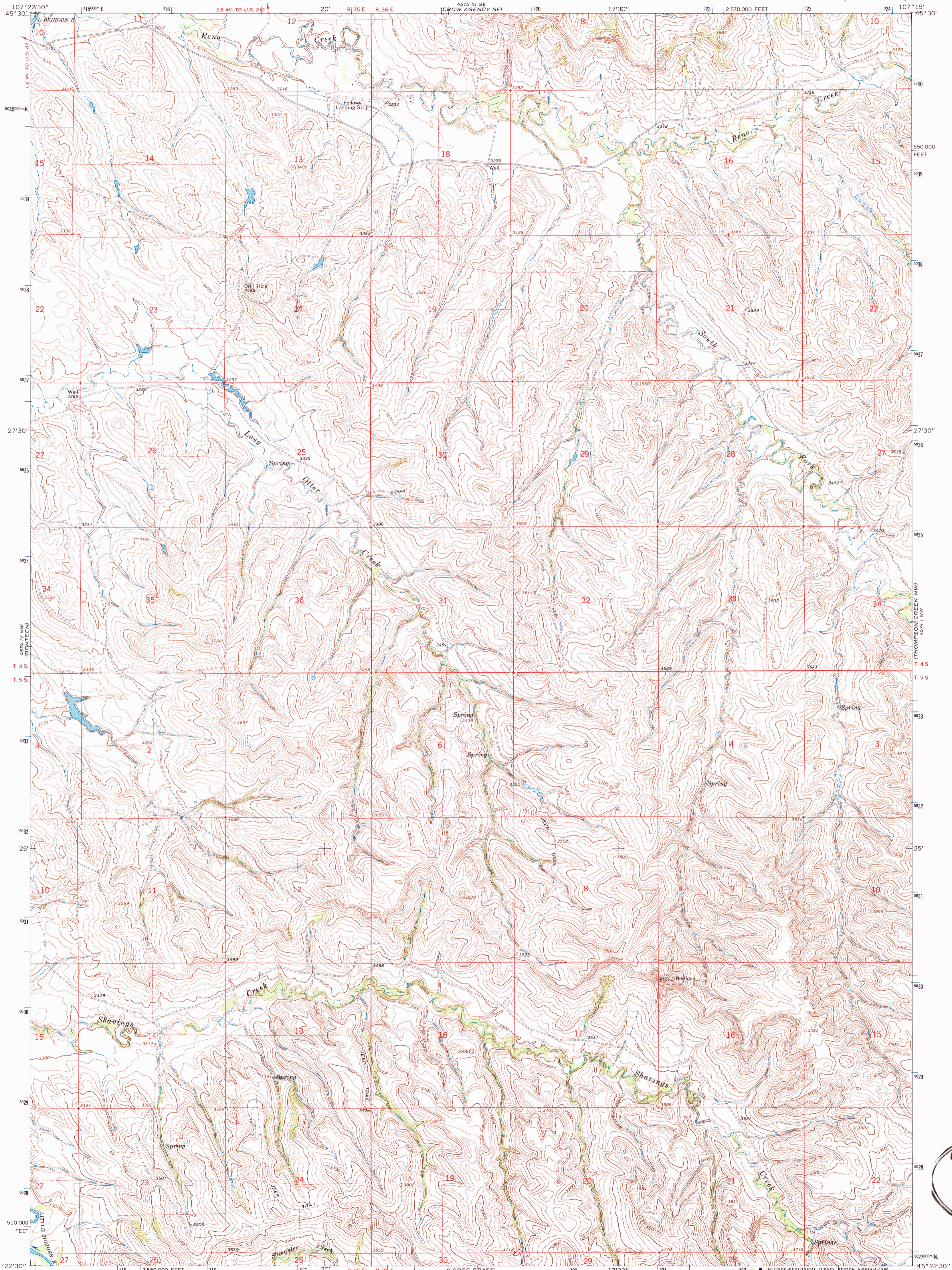


UNITED STATES
DEPARTMENT OF THE INTERIOR
GEOLOGICAL SURVEY

LODGE GRASS NE QUADRANGLE
MONTANA—BIG HORN CO.
7.5 MINUTE SERIES (TOPOGRAPHIC)



Mapped, edited, and published by the Geological Survey

Control by USGS and USC&GS

Topography by photogrammetric methods from aerial photographs taken 1966. Field checked 1967

Polycyclic projection. 1927 North American Datum

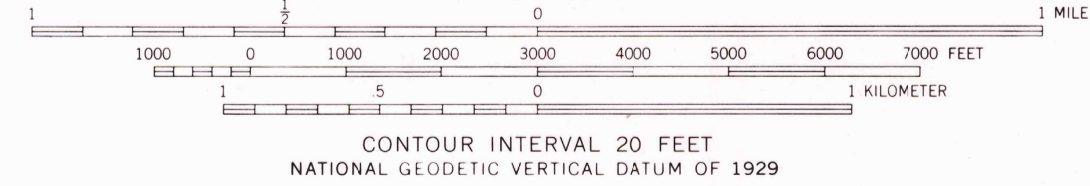
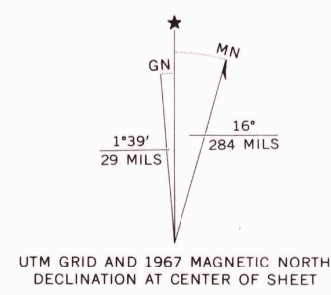
10,000-foot grid based on Montana coordinate system, south zone

1000-meter Universal Transverse Mercator grid ticks, zone 13, shown in blue

Fine red dashed lines indicate selected fence lines

Entire area lies within the boundary of the Crow Indian Reservation

To place on the predicted North American Datum 1983 move the projection lines 8 meters north and 50 meters east as shown by dashed corner ticks



ROAD CLASSIFICATION
Light-duty road, all weather, Unimproved road, fair or dry improved surface, weather

LODGE GRASS NE, MONT.
45107-D3-TF-024

1967
DMA 4574 IV NE-SERIES V894

USGS WMD HISTORICAL MAP
OCT 30 1986
REC'D FILE COPY

THIS MAP COMPLIES WITH NATIONAL MAP ACCURACY STANDARDS
FOR SALE BY U.S. GEOLOGICAL SURVEY, DENVER, COLORADO 80225, OR RESTON, VIRGINIA 22092
A FOLDER DESCRIBING TOPOGRAPHIC MAPS AND SYMBOLS IS AVAILABLE ON REQUEST