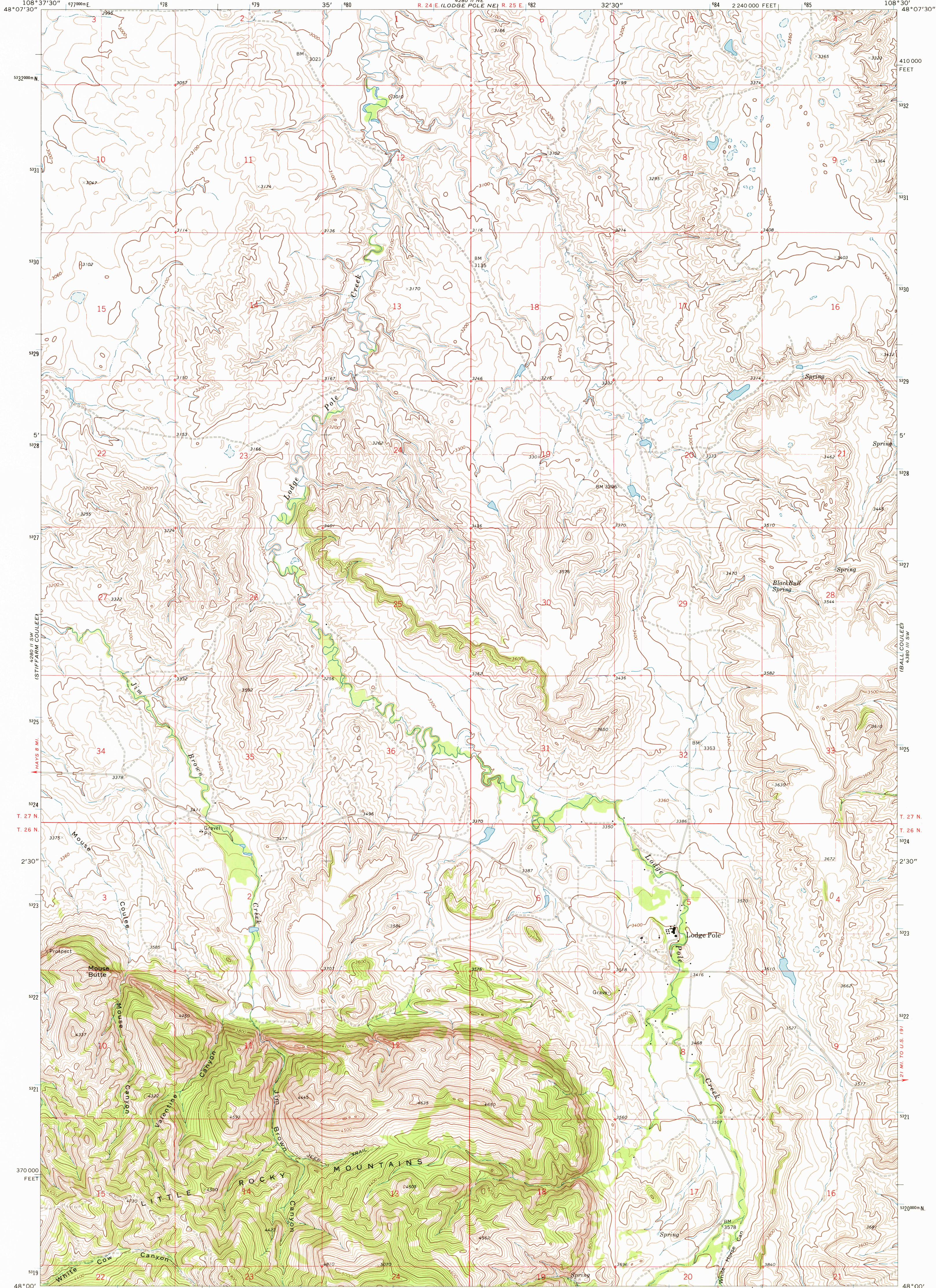


LODGE POLE NW  
108°37'30" W  
48°07'30" N

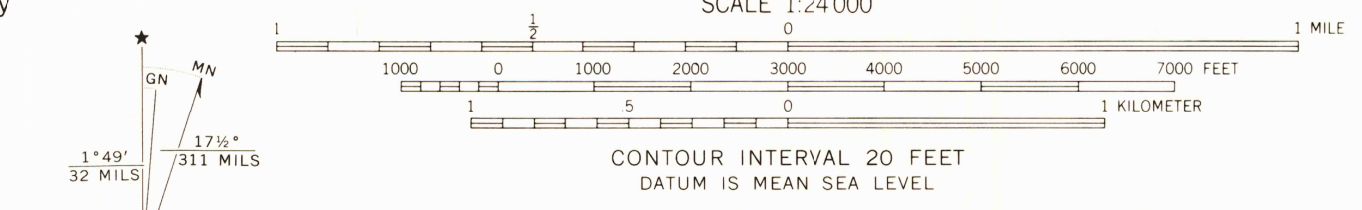
UNITED STATES  
DEPARTMENT OF THE INTERIOR  
GEOLOGICAL SURVEY

LODGE POLE QUADRANGLE  
MONTANA—BLAINE CO.  
7.5 MINUTE SERIES (TOPOGRAPHIC)

LODGE POLE NE  
108°30" W  
48°07'30" N



Mapped, edited, and published by the Geological Survey as part of the Department of the Interior program for the development of the Missouri River Basin Control by USGS and USC&GS  
Topography by photogrammetric methods from aerial photographs taken 1970. Field checked 1971  
Projection and 10,000-foot grid ticks: Montana coordinate system, north zone (Lambert conformal conic)  
1000-meter Universal Transverse Mercator grid ticks zone 12, shown in blue. 1927 North American datum  
Fine red dashed lines indicate selected fence lines  
Entire area lies within the boundary of the Fort Belknap Indian Reservation



ROAD CLASSIFICATION

Primary highway, hard surface	Light-duty road, hard or improved surface
Secondary highway, hard surface	Unimproved road
Interstate Route	U.S. Route
	State Route



3000  
LODGE POLE, MONT.  
N4800—W10830/7.5  
1971  
AMS 4280 II SE—SERIES V894

LODGE POLE SW  
108°30" W  
48°00' N

LODGE POLE NW  
108°37'30" W  
48°00' N

OCT 15 1978