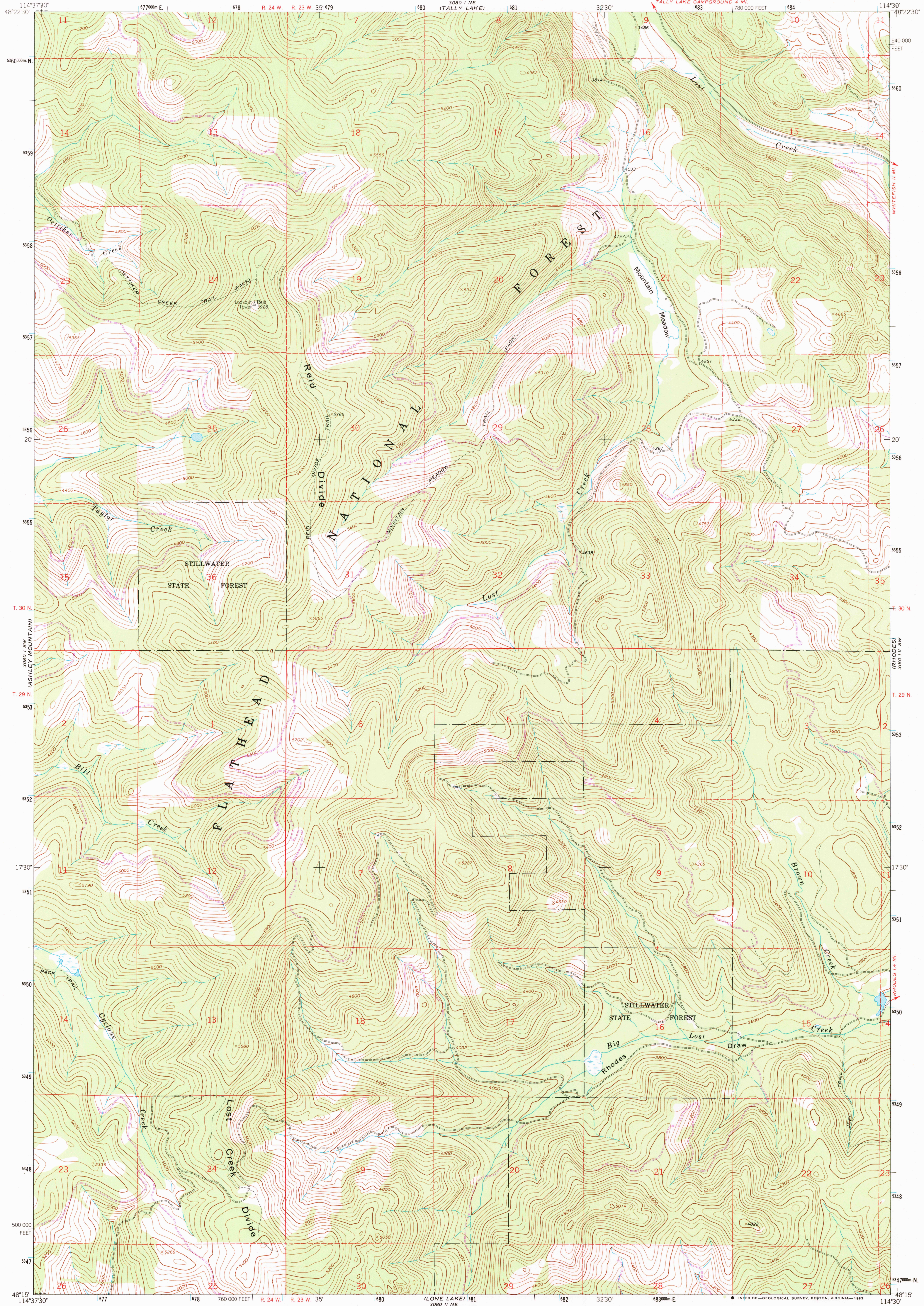


UNITED STATES
DEPARTMENT OF THE INTERIOR
GEOLOGICAL SURVEY

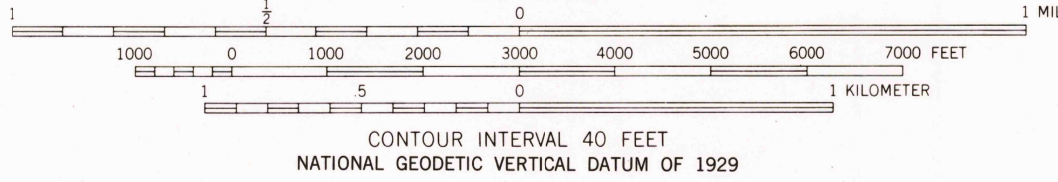
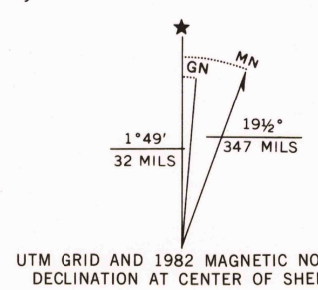
LOST CREEK DIVIDE QUADRANGLE
MONTANA—FLATHEAD CO.
7.5 MINUTE SERIES (TOPOGRAPHIC)



Mapped, edited, and published by the Geological Survey
Control by USGS and NOS/NOAA

Topography by photogrammetric methods from aerial
photographs taken 1956. Field checked 1962
Polyconic projection. 1927 North American datum
10,000-foot grid based on Montana coordinate system, north zone
1000-meter Universal Transverse Mercator grid ticks,
zone 11, shown in blue

There may be private inholdings within the boundaries
of the National or State reservations shown on this map
To place on the predicted North American Datum 1983
move the projection lines 12 meters north and
72 meters east as shown by dashed corner ticks



ROAD CLASSIFICATION
Light-duty Unimproved dirt

LOST CREEK DIVIDE, MONT.
N4815-W11430/7.5

1962
PHOTOREVISED 1982
DMA 3080 1 SE—SERIES V894

RETURN TO:
USGS MAP HISTORICAL MAP ARCHIVE