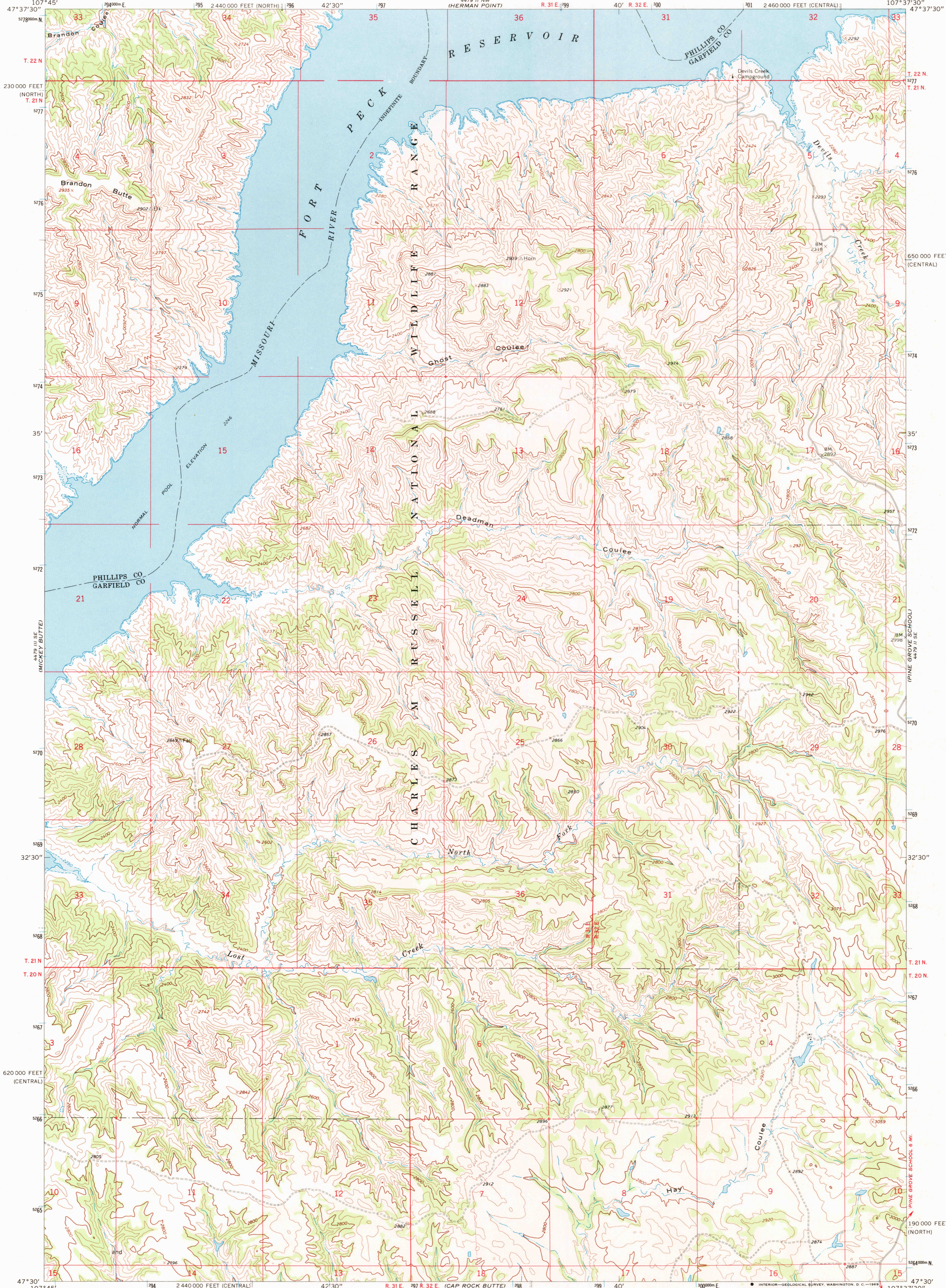
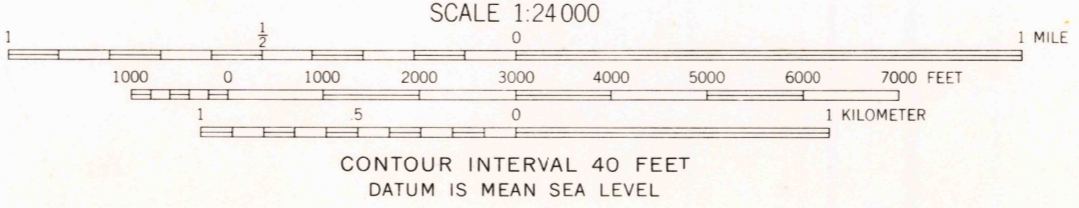
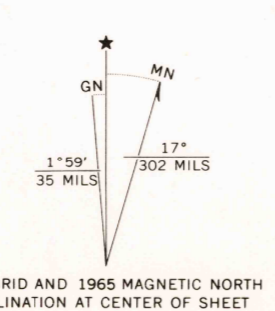


UNITED STATES
DEPARTMENT OF THE INTERIOR
GEOLOGICAL SURVEY

LOST CREEK QUADRANGLE
MONTANA
7.5 MINUTE SERIES (TOPOGRAPHIC)



Mapped, edited, and published by the Geological Survey as part of the Department of the Interior program for the development of the Missouri River Basin Control by USGS, USCGS and USCE
Topography by photogrammetric methods from aerial photographs taken 1964. Field checked 1965
Polyconic projection. 1927 North American datum 10,000-foot grids based on Montana coordinate system, central and north zones
1000-meter Universal Transverse Mercator grid ticks, zone 13, shown in blue
Fine red dashed lines indicate selected fence lines
Areas covered by dashed light-blue pattern are subject to controlled inundation



ROAD CLASSIFICATION
Light-duty ——— Unimproved dirt - - - - -

LOST CREEK, MONT.
N4730—W10737.5/7.5

USGS
Historical File
Topographic Division

U.S.G.S.
FINE COPY
TOPOGRAPHIC DIVISION

1965
AMS 4479 II SW—SERIES V894

2625
OCT 8 1965