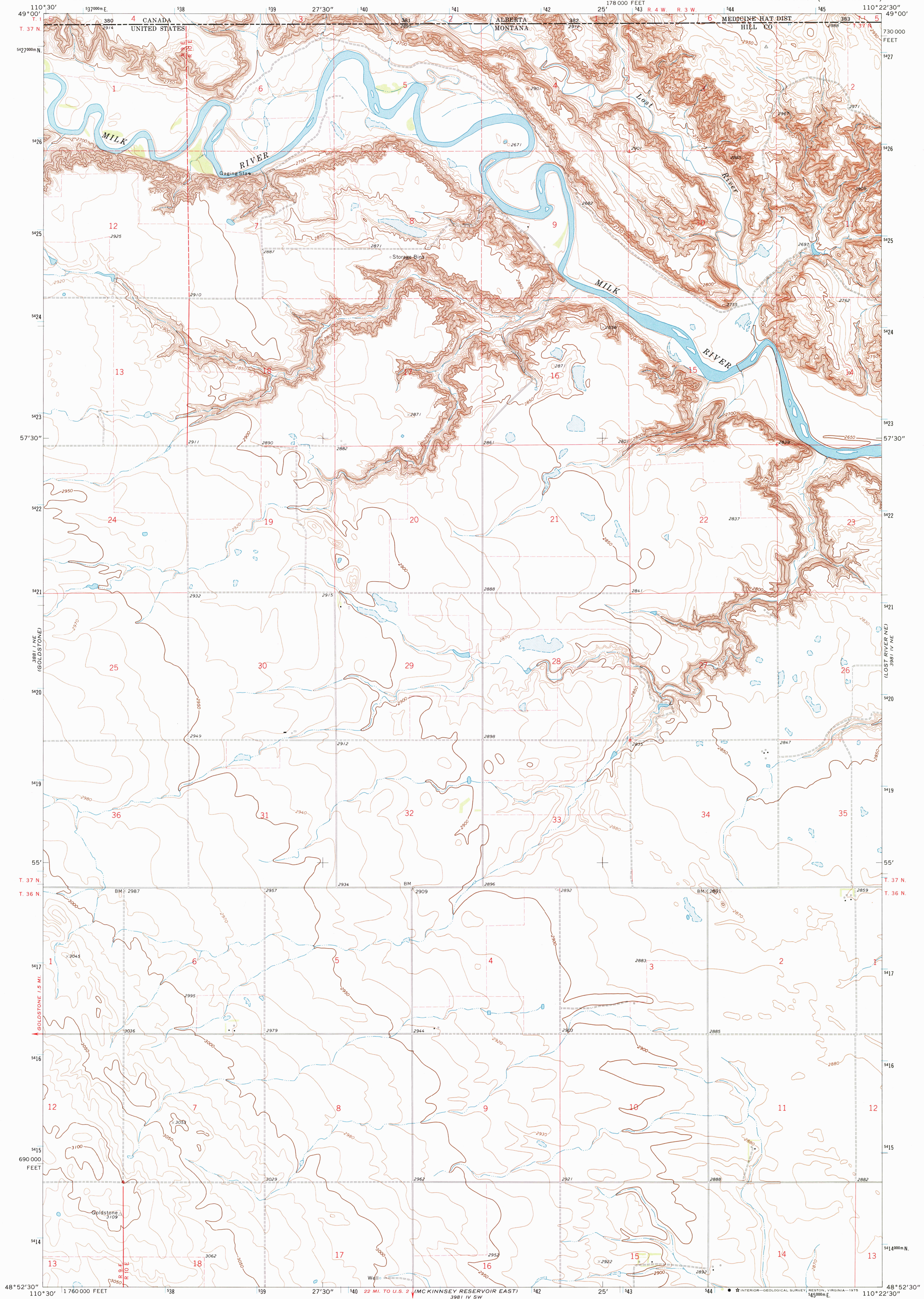
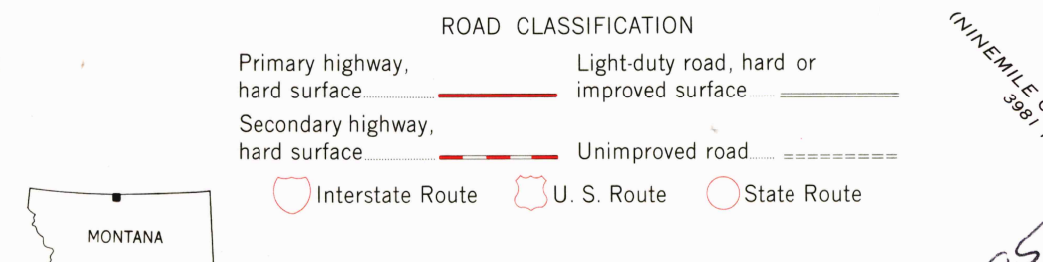
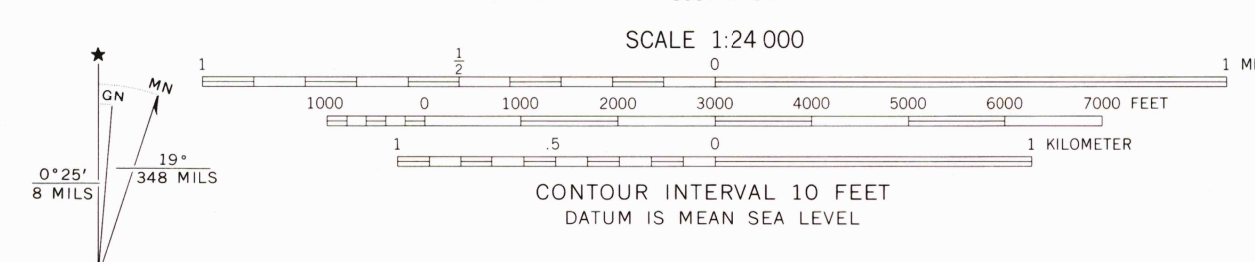


UNITED STATES
DEPARTMENT OF THE INTERIOR
GEOLOGICAL SURVEY

LOST RIVER QUADRANGLE
MONTANA-ALBERTA
7.5 MINUTE SERIES (TOPOGRAPHIC)



Mapped, edited, and published by the Geological Survey
Control by USGS, USC&GS, and International Boundary Commission
Topography by photogrammetric methods from aerial
photographs taken 1970. Field checked 1972
Projection and 10,000-foot grid ticks: Montana
coordinate system, north zone (Lambert conformal conic)
1000-meter Universal Transverse Mercator grid ticks,
zone 12, shown in blue. 1927 North American datum
Fine red dashed lines indicate selected fence lines
Dotted land lines from map by Department
of Energy, Mines, and Resources, Canada



LOST RIVER, MONT.-ALTA.
N4852.5-W11022.5/7.5

USGS
HISTORICAL FILE
TOPOGRAPHIC DIVISION
1972
AMS 3981 IV NW—SERIES V894

2850
JUL 10 1976