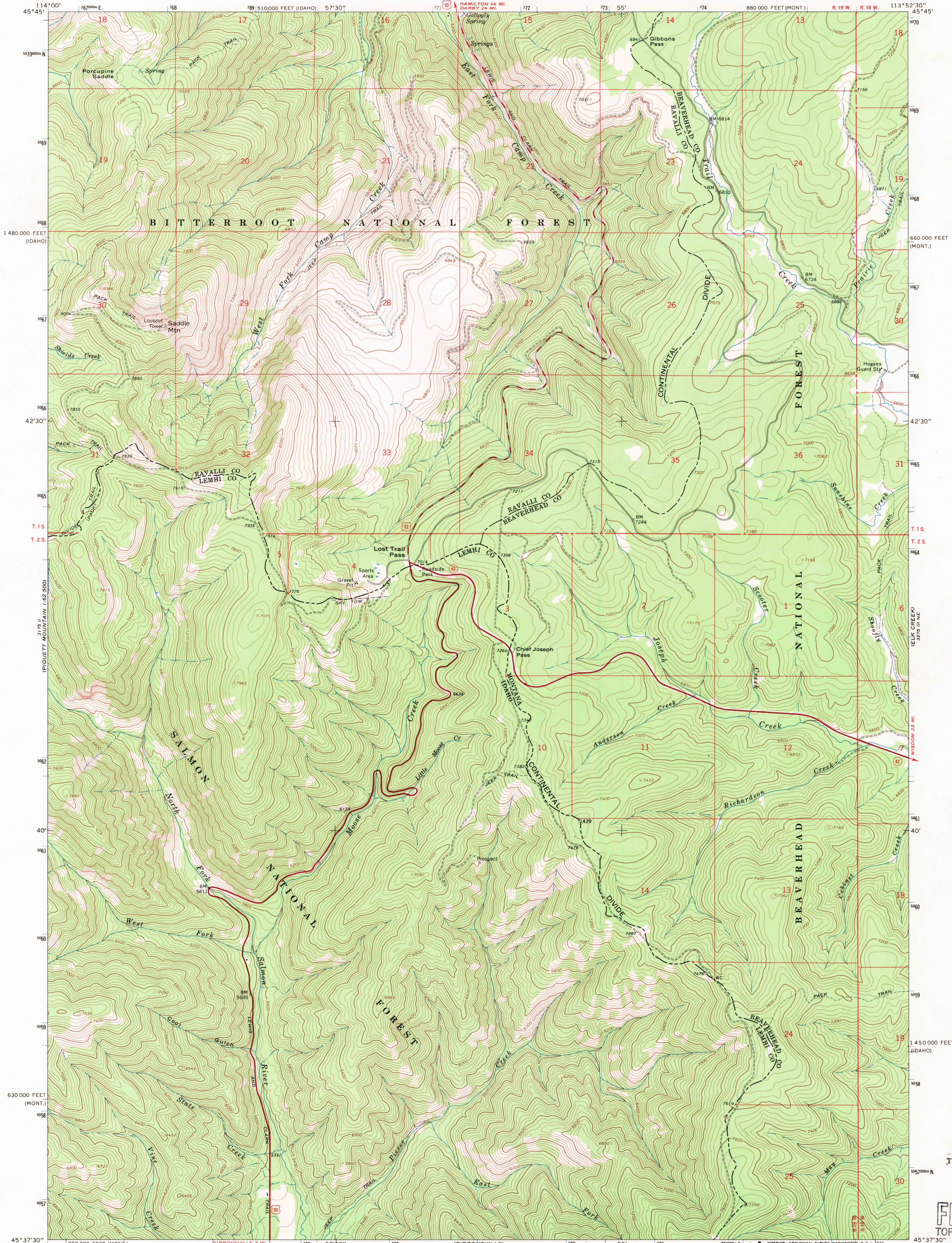
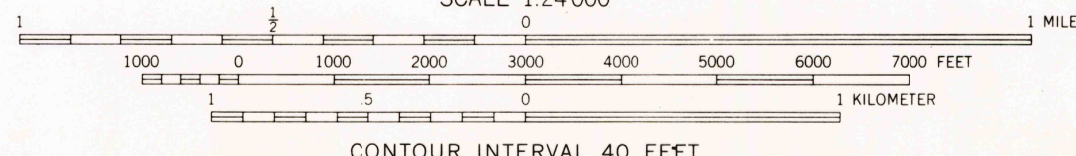
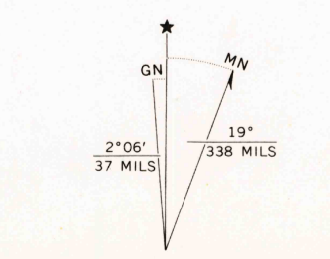


UNITED STATES
DEPARTMENT OF THE INTERIOR
GEOLOGICAL SURVEY

LOST TRAIL PASS QUADRANGLE
MONTANA-IDAHO
7.5 MINUTE SERIES (TOPOGRAPHIC)



Mapped, edited, and published by the Geological Survey
Control by USGS and USC&GS
Topography by photogrammetric methods from aerial
photographs taken 1965. Field checked 1966
Polyconic projection. 1927 North American datum
10,000-foot grids based on Montana coordinate system,
south zone and Idaho coordinate system, central zone
1000-meter Universal Transverse Mercator grid ticks,
zone 12, shown in blue
Where omitted, land lines have not been established



ROAD CLASSIFICATION
Heavy-duty ——— Light-duty ———
Medium-duty ——— Unimproved dirt - - - - -
U.S. Route ○ State Route ○

LOST TRAIL PASS, MONT.-IDAHO
N4537.5-W11352.5/7.5
1966
AMS 3275 III NW-SERIES V894

USGS File
USGS File
Historical File
Topographic Division
U.S.G.S.
FILE COPY
TOPOGRAPHIC DIVISION

MAY 8 1970