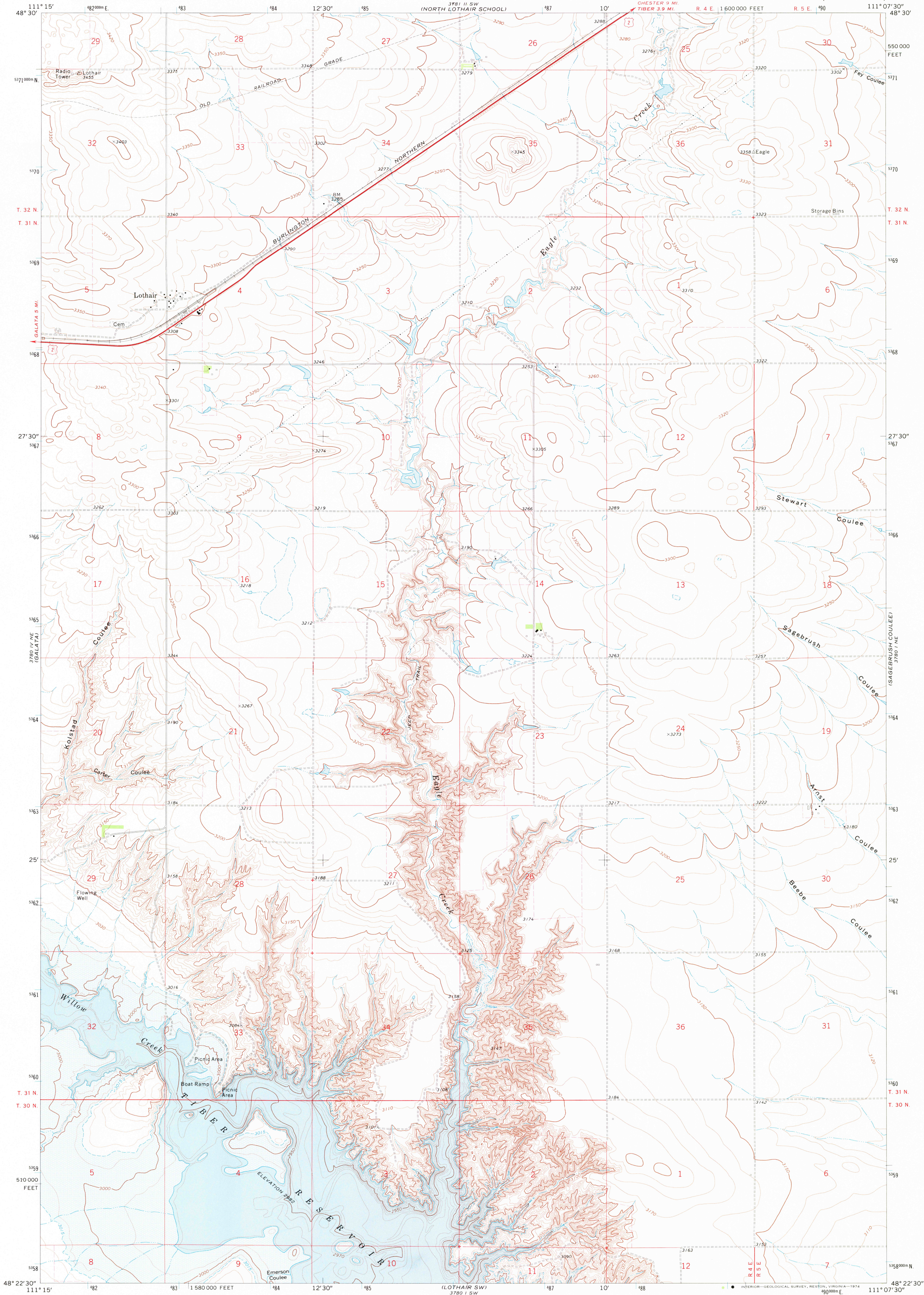


UNITED STATES
DEPARTMENT OF THE INTERIOR
GEOLOGICAL SURVEY

LOTHAIR QUADRANGLE
MONTANA—LIBERTY CO.
7.5 MINUTE SERIES (TOPOGRAPHIC)



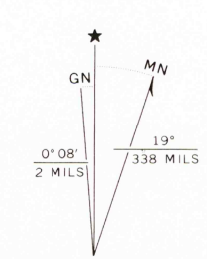
Maped, edited, and published by the Geological Survey

as part of the Department of the Interior program
for the development of the Missouri River Basin
Control by USGS and USC&GS

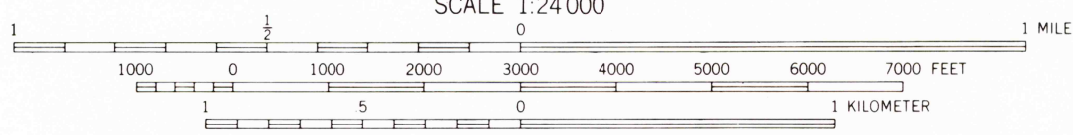
Topography by photogrammetric methods from aerial
photographs taken 1969. Field checked 1970

Polyconic projection. 1927 North American datum
10,000-foot grid based on Montana coordinate system,
north zone.
1000-meter Universal Transverse Mercator grid ticks,
zone 12, shown in blue

Fine red dashed lines indicate selected fence lines
Areas covered by dashed light-blue pattern are subject
to controlled inundation

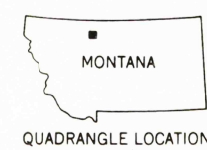


UTM GRID AND 1970 MAGNETIC NORTH
DECLINATION AT CENTER OF SHEET



SCALE 1:24,000

CONTOUR INTERVAL 10 FEET
DATUM IS MEAN SEA LEVEL



QUADRANGLE LOCATION

| ROAD CLASSIFICATION | |
|---------------------------------|---|
| Primary highway, hard surface | Light-duty road, hard or improved surface |
| Secondary highway, hard surface | Unimproved road |
| Interstate Route | U. S. Route |
| | State Route |

USGS
Historical File
Topographic Division

LOTHAIR, MONT.
N4822.5—W11107.5/7.5
1970

MAY 20 1974

AMS 3780 1 NW—SERIES V894

2825