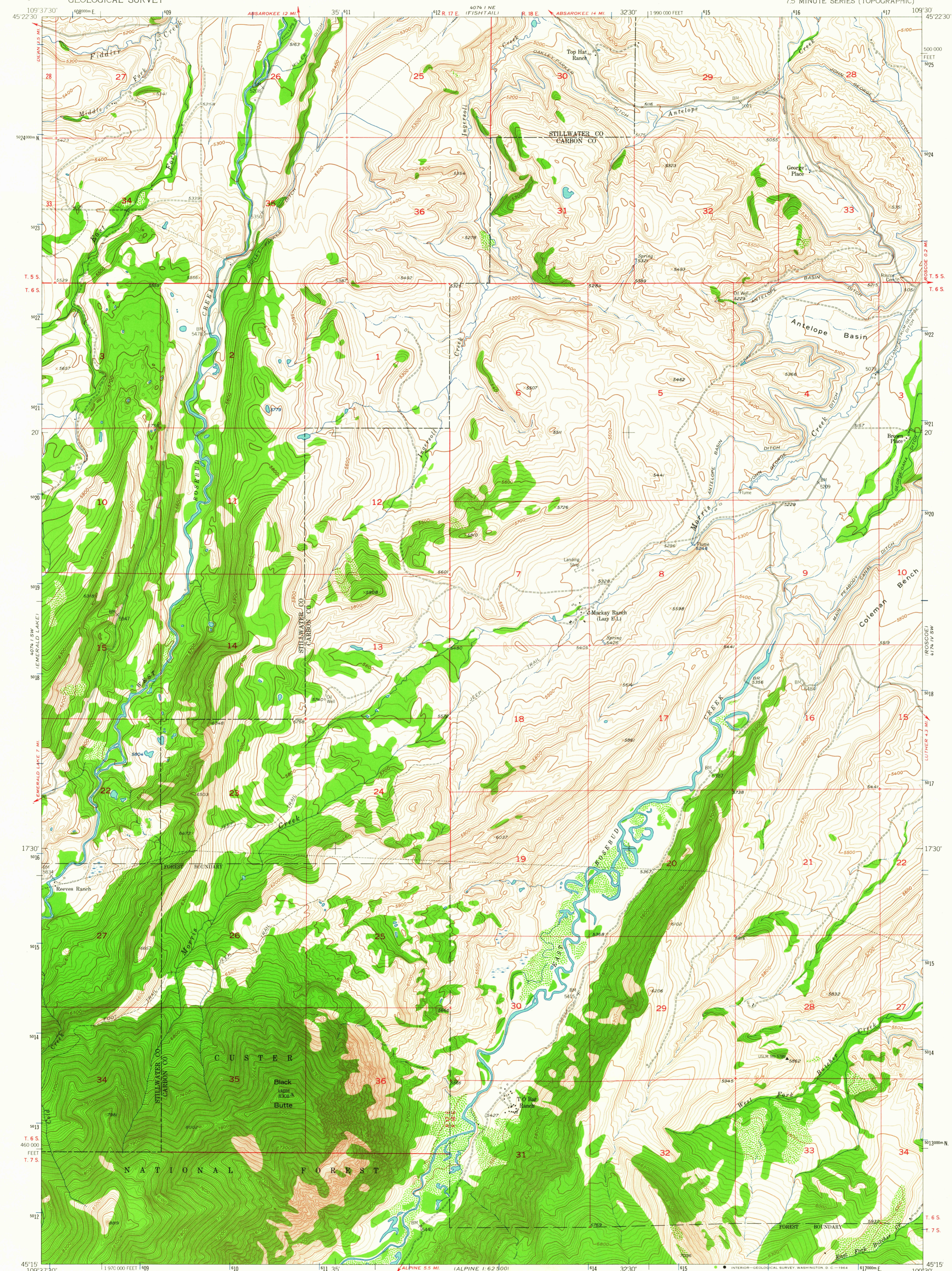


40° 14' N  
109° 37' W

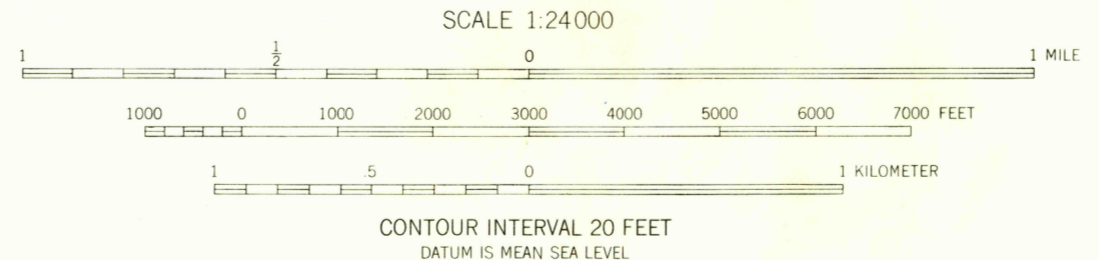
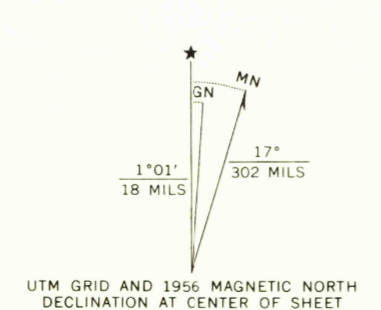
UNITED STATES  
DEPARTMENT OF THE INTERIOR  
GEOLOGICAL SURVEY

MACKAY RANCH QUADRANGLE  
MONTANA  
7.5 MINUTE SERIES (TOPOGRAPHIC)

41° 14' N W  
108° 00' E



Mapped, edited, and published by the Geological Survey as part of the Department of the Interior program for the development of the Missouri River Basin  
Control by USGS and USC&GS  
Topography from aerial photographs by multiplex methods  
Aerial photographs taken 1951. Field check 1956  
Polyconic projection. 1927 North American datum  
10,000-foot grid based on Montana coordinate system, south zone  
1000-meter Universal Transverse Mercator grid ticks, zone 12, shown in blue  
Land lines unsurveyed in T.7S., R.17 and 18 E.



ROAD CLASSIFICATION  
Light-duty ——— Unimproved dirt - - - - -

MACKAY RANCH, MONT.  
N4515-W10930/7.5

1956  
AMS 4074 1 SE-SERIES V894

U.S.G.S.  
FILE COPY  
TOPOGRAPHIC DIVISION

USGS  
Historical File  
Topographic Division

DEC 2 2 1964

2710