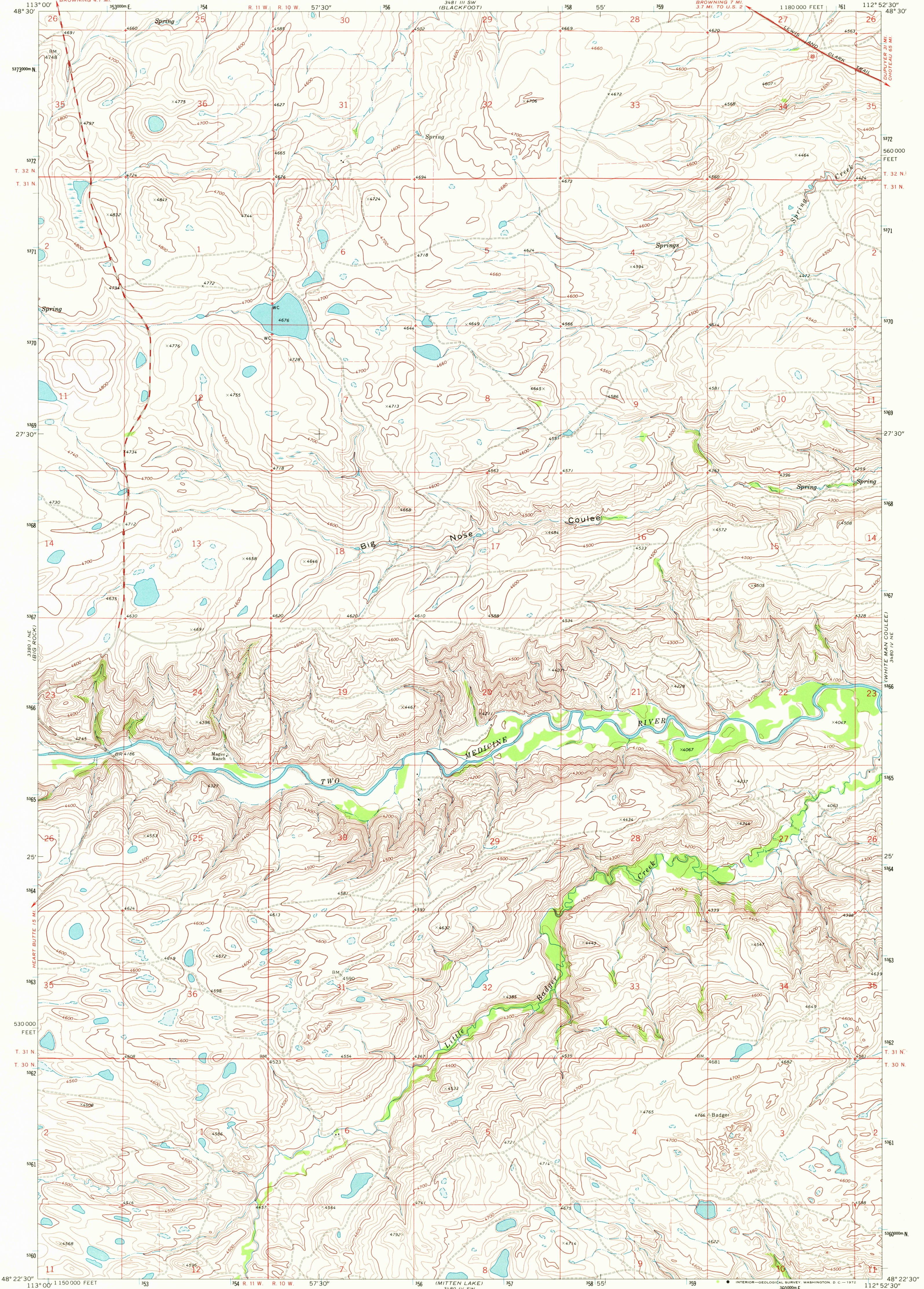


UNITED STATES
DEPARTMENT OF THE INTERIOR
GEOLOGICAL SURVEY

MAGEE RANCH QUADRANGLE
MONTANA—GLACIER CO.
7.5 MINUTE SERIES (TOPOGRAPHIC)



Mapped, edited, and published by the Geological Survey

Control by USGS and USC&GS

Topography by photogrammetric methods from aerial photographs taken 1966. Field checked 1968.

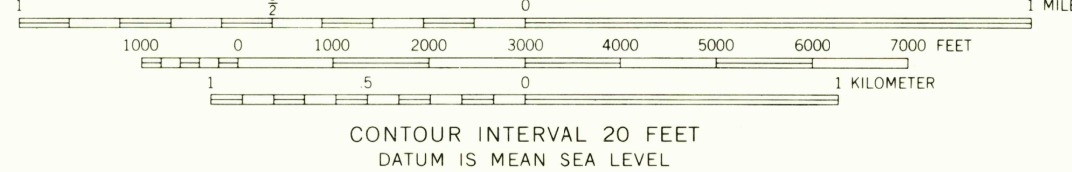
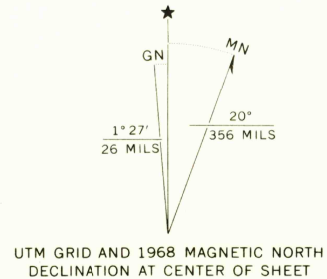
Polyconic projection. 1927 North American datum

10,000-foot grid based on Montana coordinate system, north zone

1000-meter Universal Transverse Mercator grid ticks, zone 12, shown in blue

Fine red dashed lines indicate selected fence lines

Entire area lies within the boundary of the Blackfeet Indian Reservation



ROAD CLASSIFICATION	
Primary highway, all weather, hard surface	Light-duty road, all weather, improved surface
Secondary highway, all weather, hard surface	Unimproved road, fair or dry weather
U. S. Route	

MAGEE RANCH, MONT.
N4822.5-W11252.5/7.5

1968

AMS 3480 IV NW—SERIES V894

USGS
HISTORICAL FILE
TOPOGRAPHIC DIVISION

JUN 14 1972

2465