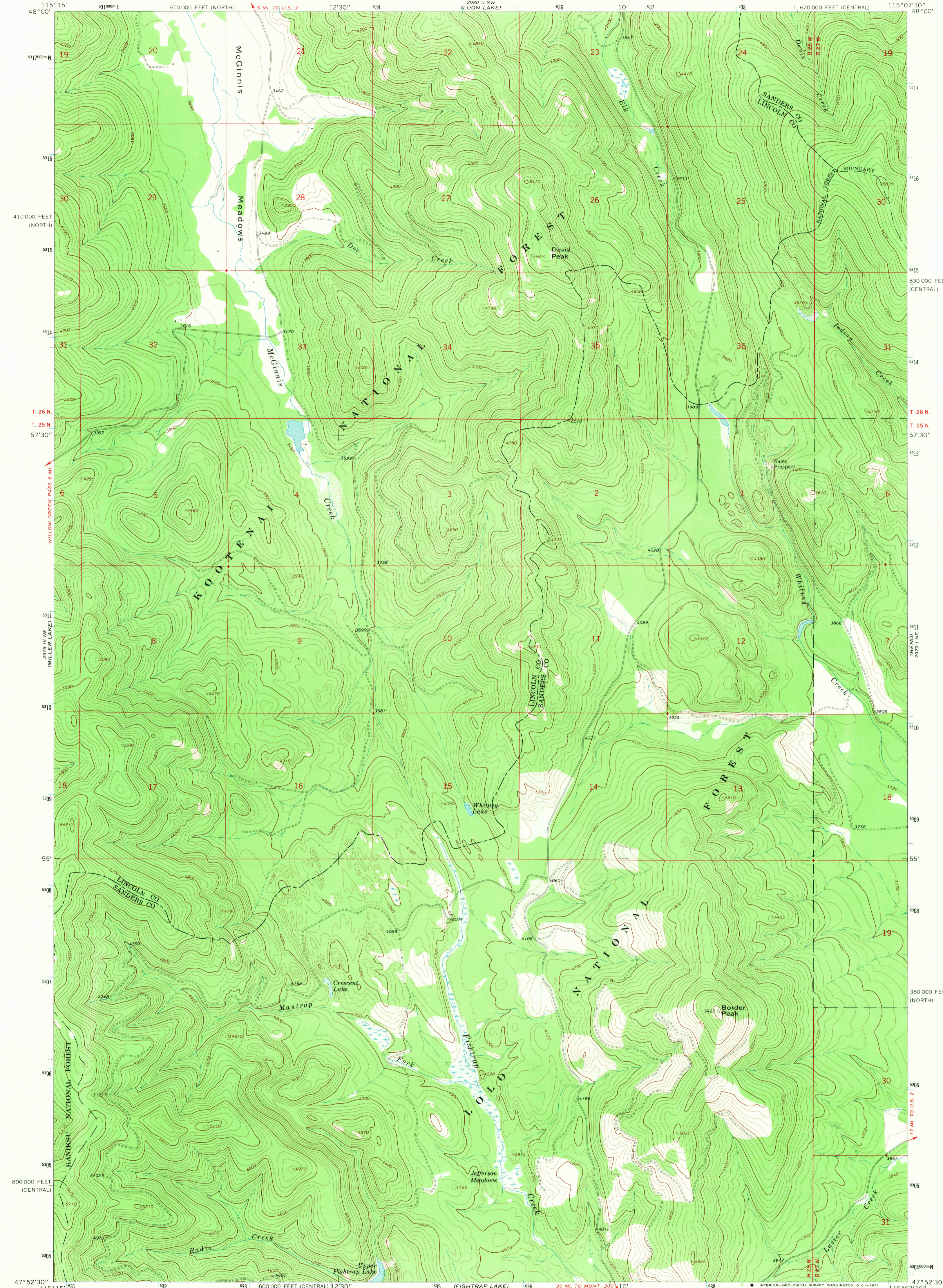
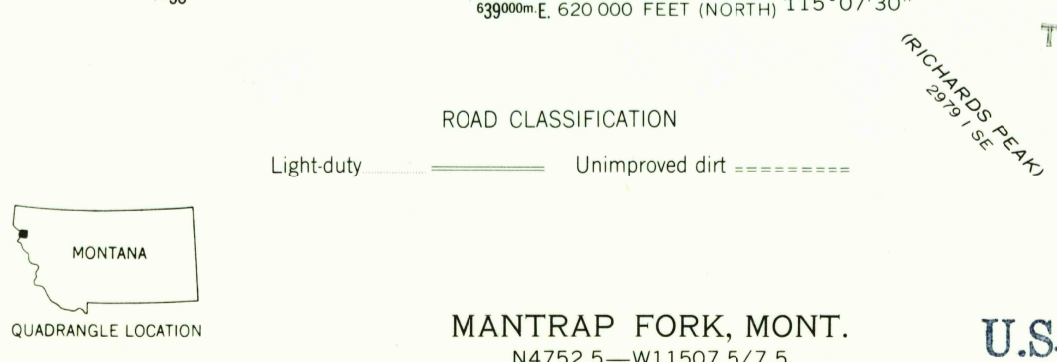
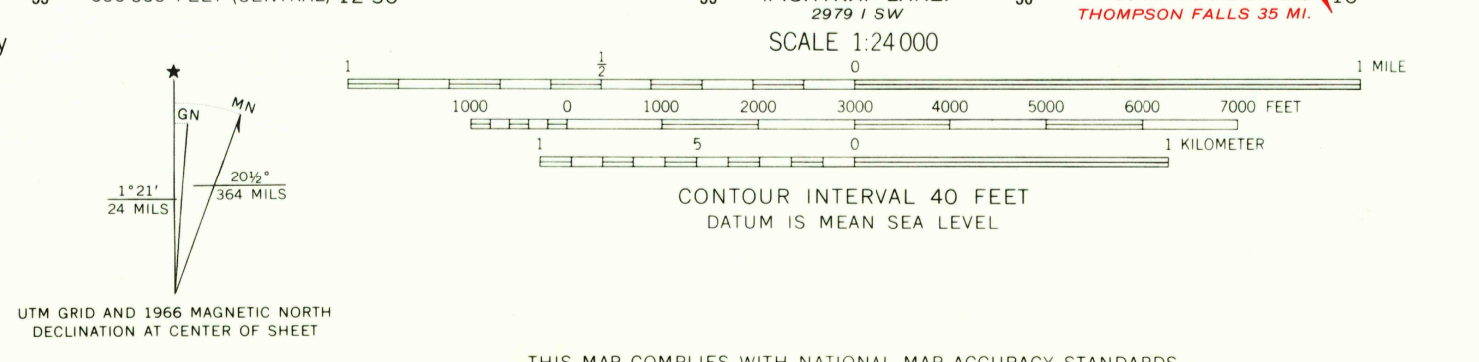


2092 IV NE  
(KENNELLY MTS)

2080 I SE  
(THOMPSON LAKES)



Mapped, edited, and published by the Geological Survey  
Control by USGS and USC&GS  
Topography by photogrammetric methods from aerial  
photographs taken 1965. Field checked 1966  
Polyconic projection 1927 North American datum  
10,000-foot grids based on Montana coordinate system,  
central and north zones  
1000-meter Universal Transverse Mercator grid ticks,  
zone 11, shown in blue  
Where omitted, land lines have not been established



THIS MAP COMPLIES WITH NATIONAL MAP ACCURACY STANDARDS  
FOR SALE BY U.S. GEOLOGICAL SURVEY, DENVER, COLORADO 80225, OR WASHINGTON, D. C. 20242  
A FOLDER DESCRIBING TOPOGRAPHIC MAPS AND SYMBOLS IS AVAILABLE ON REQUEST

MANTRAP FORK, MONT.  
N4752.5—W11507.5/7.5  
1966  
AMS 2979 I NW—SERIES V894  
U.S.G.S. MAR 25 1971  
FILE COPY  
TOPOGRAPHIC DIVISION