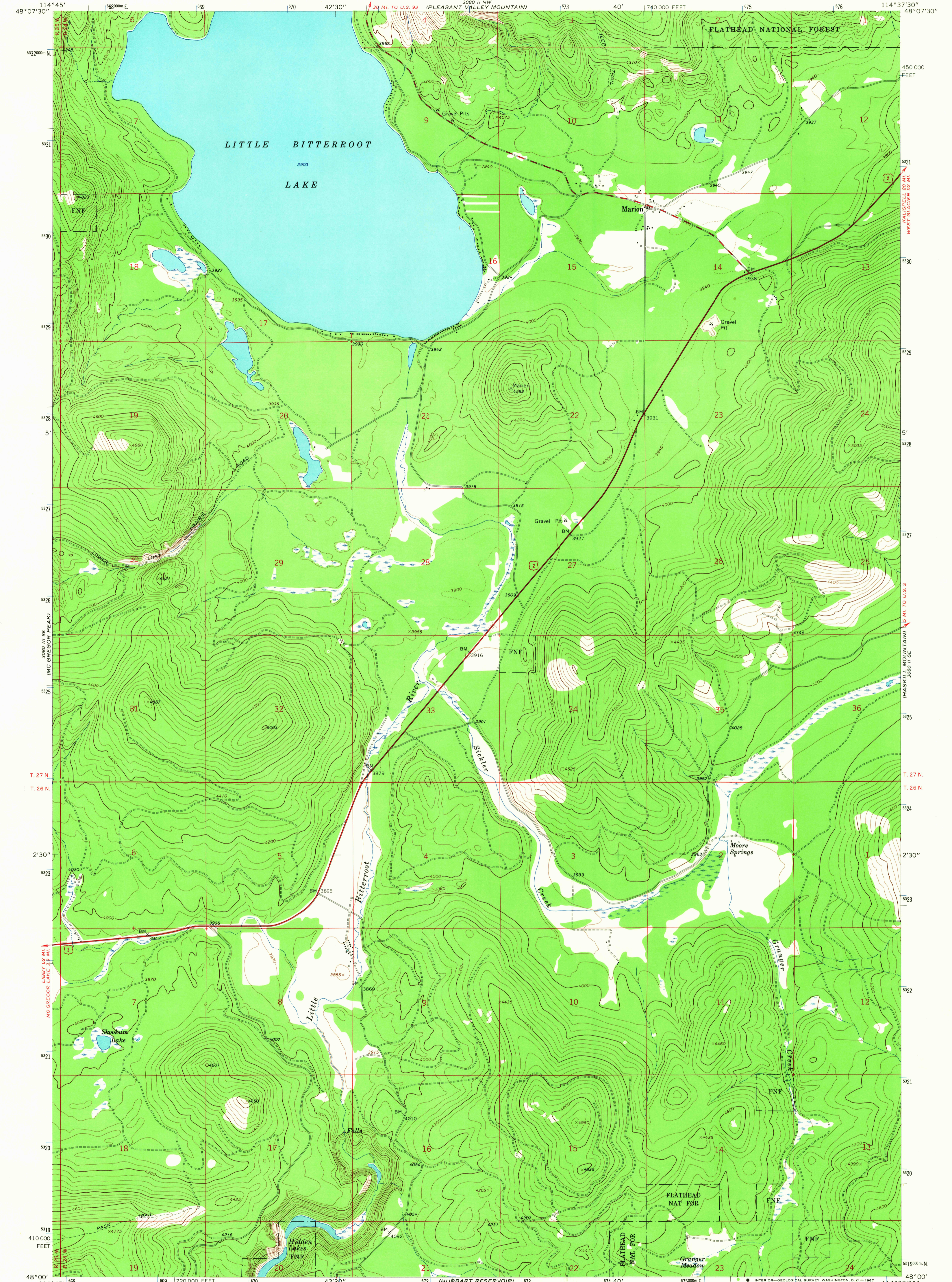


3800 II NW
DUFF LAKE

UNITED STATES
DEPARTMENT OF THE INTERIOR
GEOLOGICAL SURVEY

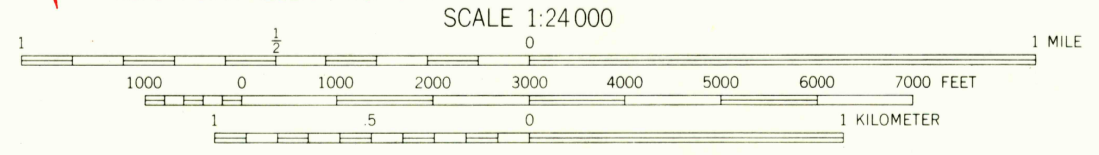
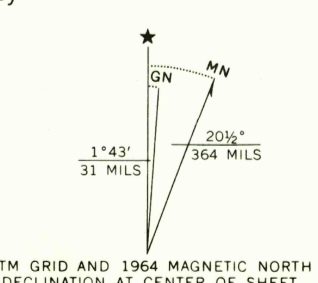
MARION QUADRANGLE
MONTANA—FLATHEAD CO.
7.5 MINUTE SERIES (TOPOGRAPHIC)

3800 II NW
LONG LAKE



3800 II SE
MURPHY PEAK

Mapped, edited, and published by the Geological Survey
Control by USGS and USC&GS
Topography by photogrammetric methods from aerial
photographs taken 1963 and 1964. Field checked 1964
Polyconic projection. 1927 North American datum
10,000-foot grid based on Montana coordinate system,
north zone
1000-meter Universal Transverse Mercator grid ticks,
zone 11, shown in blue



ROAD CLASSIFICATION

Heavy-duty	Light-duty
Medium-duty	Unimproved dirt
U.S. Route	

MARION, MONT.
N4800—W11437.5/7.5

USGS
Historical File
Topographic Division

3300

OCT 31 1967