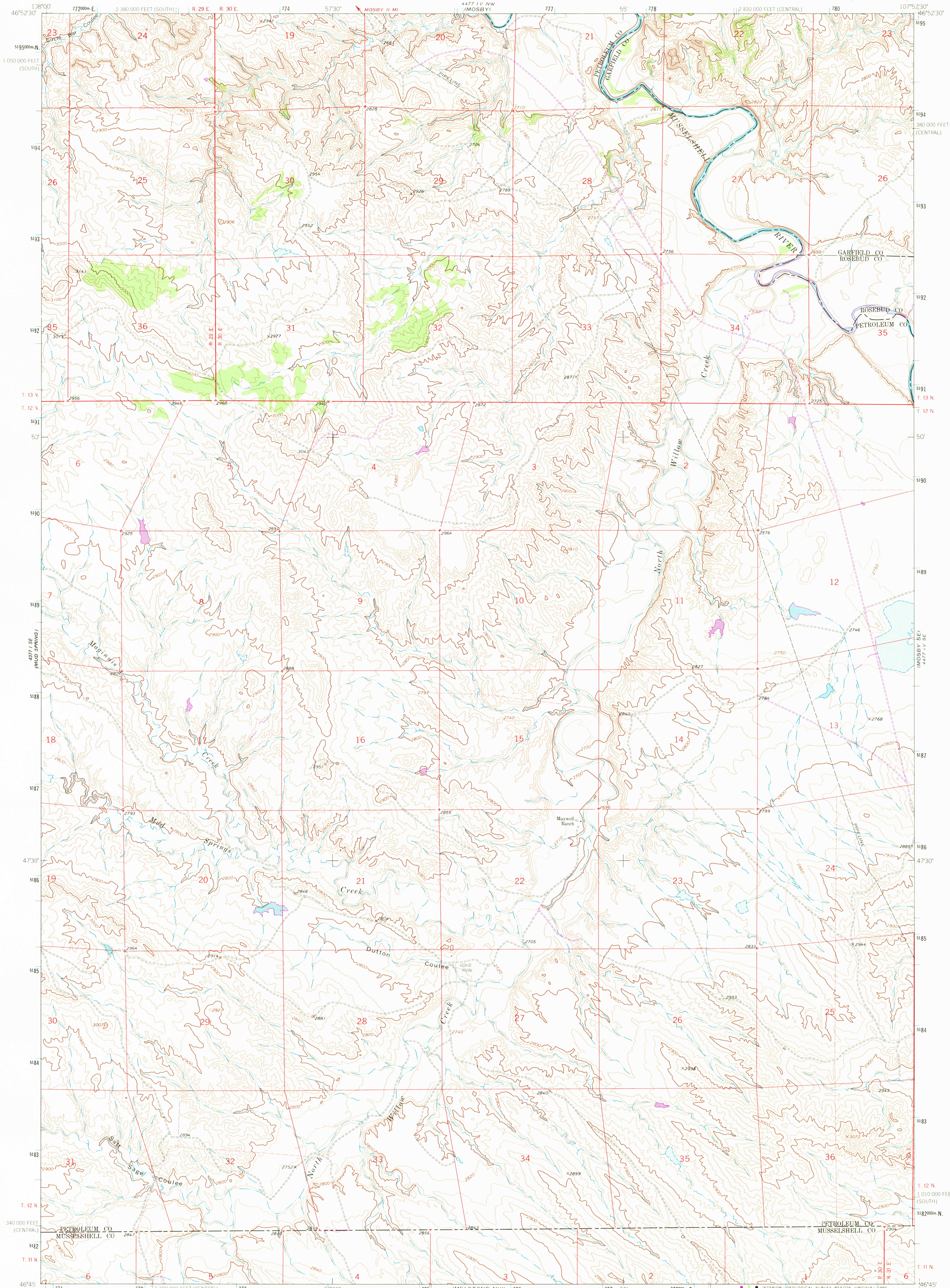


UNITED STATES
DEPARTMENT OF THE INTERIOR
GEOLOGICAL SURVEY

MAXWELL RANCH QUADRANGLE
MONTANA
7.5 MINUTE SERIES (TOPOGRAPHIC)

4277 NE
MUSSELSHELL

4277 NE
MUSSELSHELL



Mapped, edited, and published by the Geological Survey

Control by USGS and USC&GS

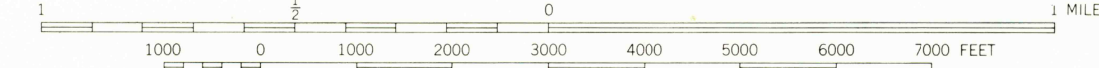
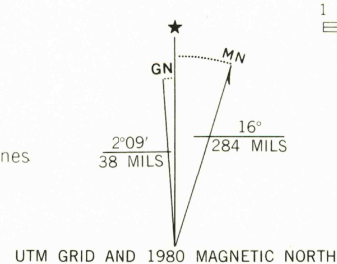
Topography by photogrammetric methods from aerial photographs taken 1961. Field checked 1962

Polyconic projection. 1927 North American datum. 10,000-foot grid based on Montana coordinate system, central and south zones. 1000-meter Universal Transverse Mercator grid ticks, zone 13, shown in blue.

Fine red dashed lines indicate selected fence lines.

To place on the predicted North American Datum 1983, move the projection lines 6 meters north and 52 meters east as shown by dashed-corner ticks.

Revisions shown in purple compiled from aerial photographs taken 1978. Map edited 1980. This information not field checked.



CONTOUR INTERVAL 20 FEET
DOTTED LINES REPRESENT 10 FOOT CONTOURS
NATIONAL GEODETIC VERTICAL DATUM OF 1929

THIS MAP COMPLIES WITH NATIONAL MAP ACCURACY STANDARDS
FOR SALE BY U.S. GEOLOGICAL SURVEY, DENVER, COLORADO 80225, OR RESTON, VIRGINIA 22092
A FOLDER DESCRIBING TOPOGRAPHIC MAPS AND SYMBOLS IS AVAILABLE ON REQUEST



USGS
Historical File
Topographic Division

ROAD CLASSIFICATION
Unimproved dirt = - - - - -

MAXWELL RANCH, MONT.
N4645-W10752.5/7.5

1962
PHOTOREVISED 1980
DMA 4477 IV SW-SERIES V894

OCT 29 1980

2000