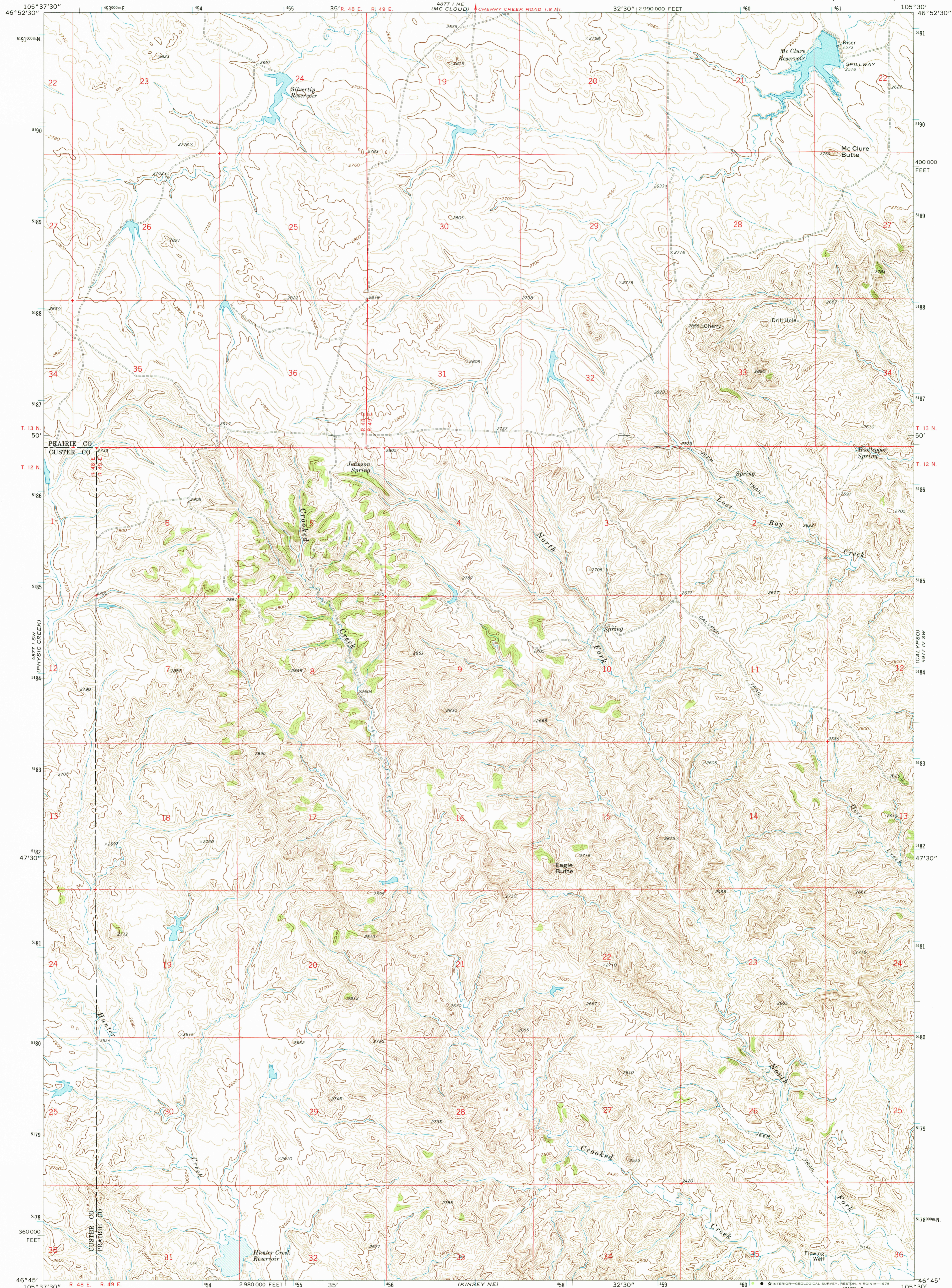


UNITED STATES  
DEPARTMENT OF THE INTERIOR  
GEOLOGICAL SURVEY

MC CLURE RESERVOIR QUADRANGLE  
MONTANA  
7.5 MINUTE SERIES (TOPOGRAPHIC)



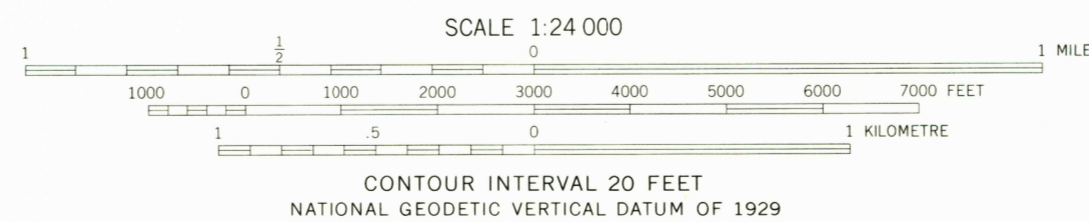
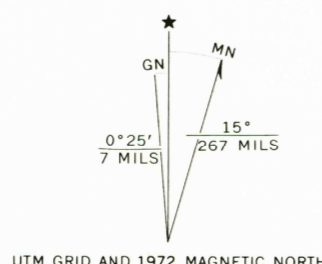
Mapped, edited, and published by the Geological Survey

Control by USGS and USC&GS

Topography by photogrammetric methods from aerial photographs taken 1971. Field checked 1972

Projection and 10,000-foot grid ticks: Montana coordinate system, central zone (Lambert conformal conic) 1000-metre Universal Transverse Mercator grid ticks, zone 13, shown in blue. 1927 North American datum

Fine red dashed lines indicate selected fence lines  
Areas covered by dashed light-blue pattern are subject to controlled inundation



ROAD CLASSIFICATION

- Primary highway, hard surface
- Secondary highway, hard surface
- Light duty road, hard or improved surface
- Unimproved road
- Interstate Route
- U. S. Route
- State Route



QUADRANGLE LOCATION

MC CLURE RESERVOIR, MONT.  
N4645-W10530/7.5

1972

AMS 4877 1 SE-SERIES V884

HISTORICAL FILE  
TOPOGRAPHIC DIVISION

THIS MAP COMPLIES WITH NATIONAL MAP ACCURACY STANDARDS  
FOR SALE BY U.S. GEOLOGICAL SURVEY, DENVER, COLORADO 80225, OR RESTON, VIRGINIA 22092  
A FOLDER DESCRIBING TOPOGRAPHIC MAPS AND SYMBOLS IS AVAILABLE ON REQUEST

SEP 4 1975

50  
150  
2,150