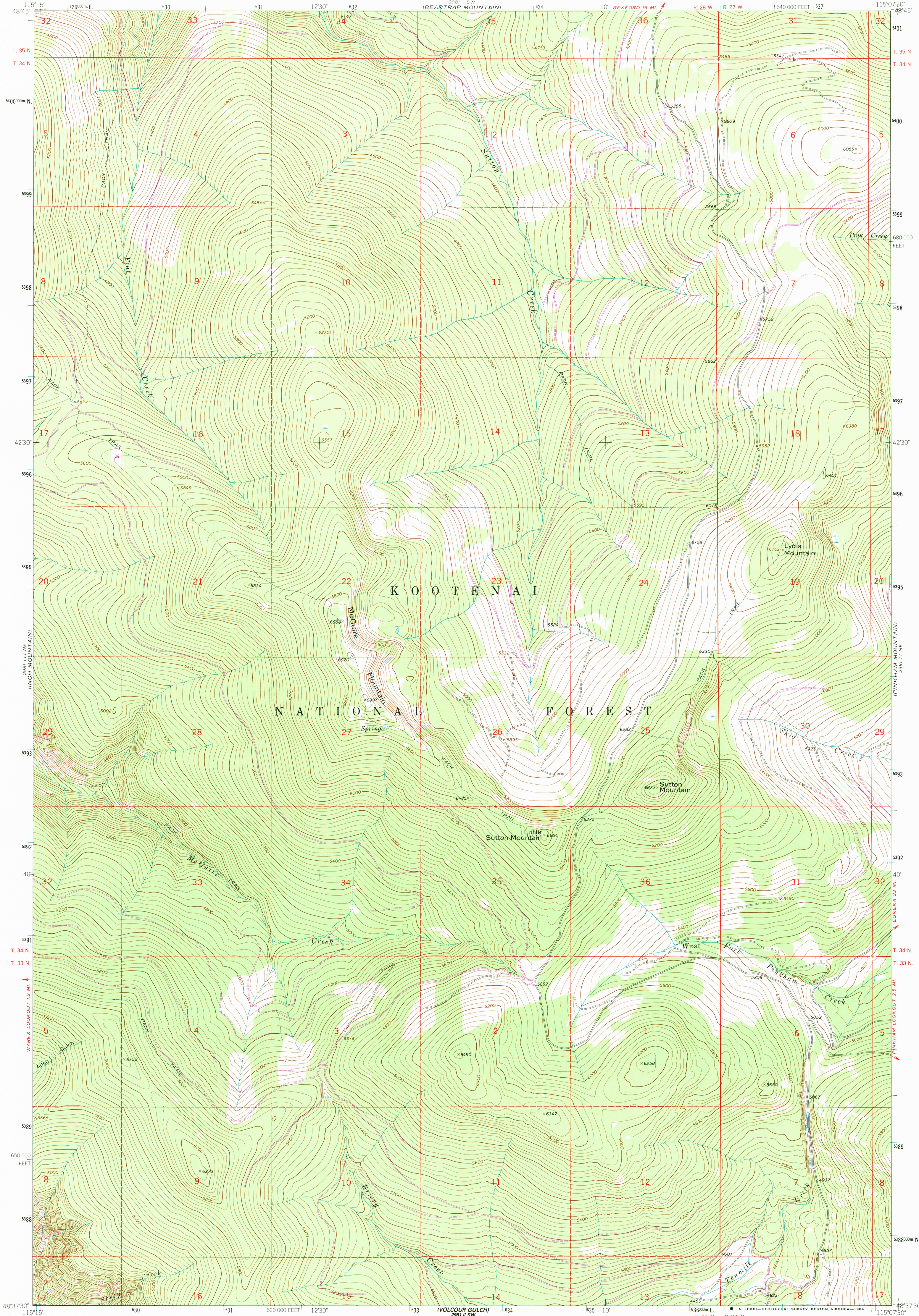


UNITED STATES
DEPARTMENT OF THE INTERIOR
GEOLOGICAL SURVEY

MC GUIRE MOUNTAIN QUADRANGLE
MONTANA-LINCOLN CO.
7.5 MINUTE SERIES (TOPOGRAPHIC)



Mapped, edited, and published by the Geological Survey

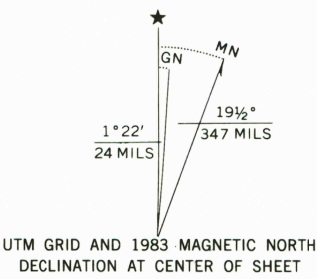
Control by USGS and NOS/NOAA

Topography by photogrammetric methods from aerial photographs taken 1962. Field checked 1963.

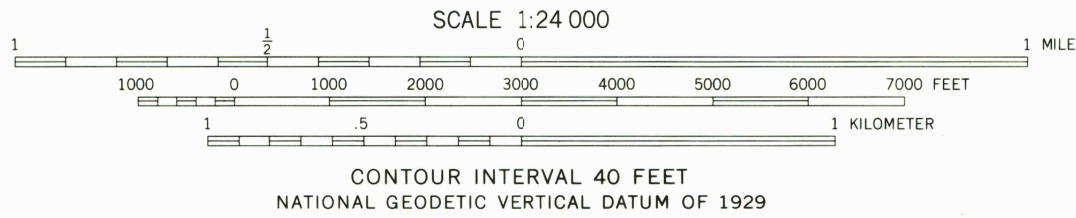
Polyconic projection. 1927 North American Datum
10,000-foot grid based on Montana coordinate system, north zone
1000-meter Universal Transverse Mercator grid ticks,
zone 11, shown in blue

There may be private inholdings within the boundaries of the National or State reservations shown on this map

To place on the predicted North American Datum 1983 move the projection lines 12 meters north and 73 meters east as shown by dashed corner ticks



UTM GRID AND 1983 MAGNETIC NORTH DECLINATION AT CENTER OF SHEET



THIS MAP COMPLIES WITH NATIONAL MAP ACCURACY STANDARDS
FOR SALE BY U. S. GEOLOGICAL SURVEY, DENVER, COLORADO 80225, OR RESTON, VIRGINIA 22092
A FOLDER DESCRIBING TOPOGRAPHIC MAPS AND SYMBOLS IS AVAILABLE ON REQUEST



QUADRANGLE LOCATION

ROAD CLASSIFICATION
Light-duty ————— Unimproved dirt —————

MC GUIRE MOUNTAIN, MONT.
48115-F2-TF-024

1963
PHOTOREVISED 1983
DMA 2981 11 NW-SERIES V894

RETURN TO:
USGS NMD HISTORICAL MAP ARCHIVES

FEB 21 1984