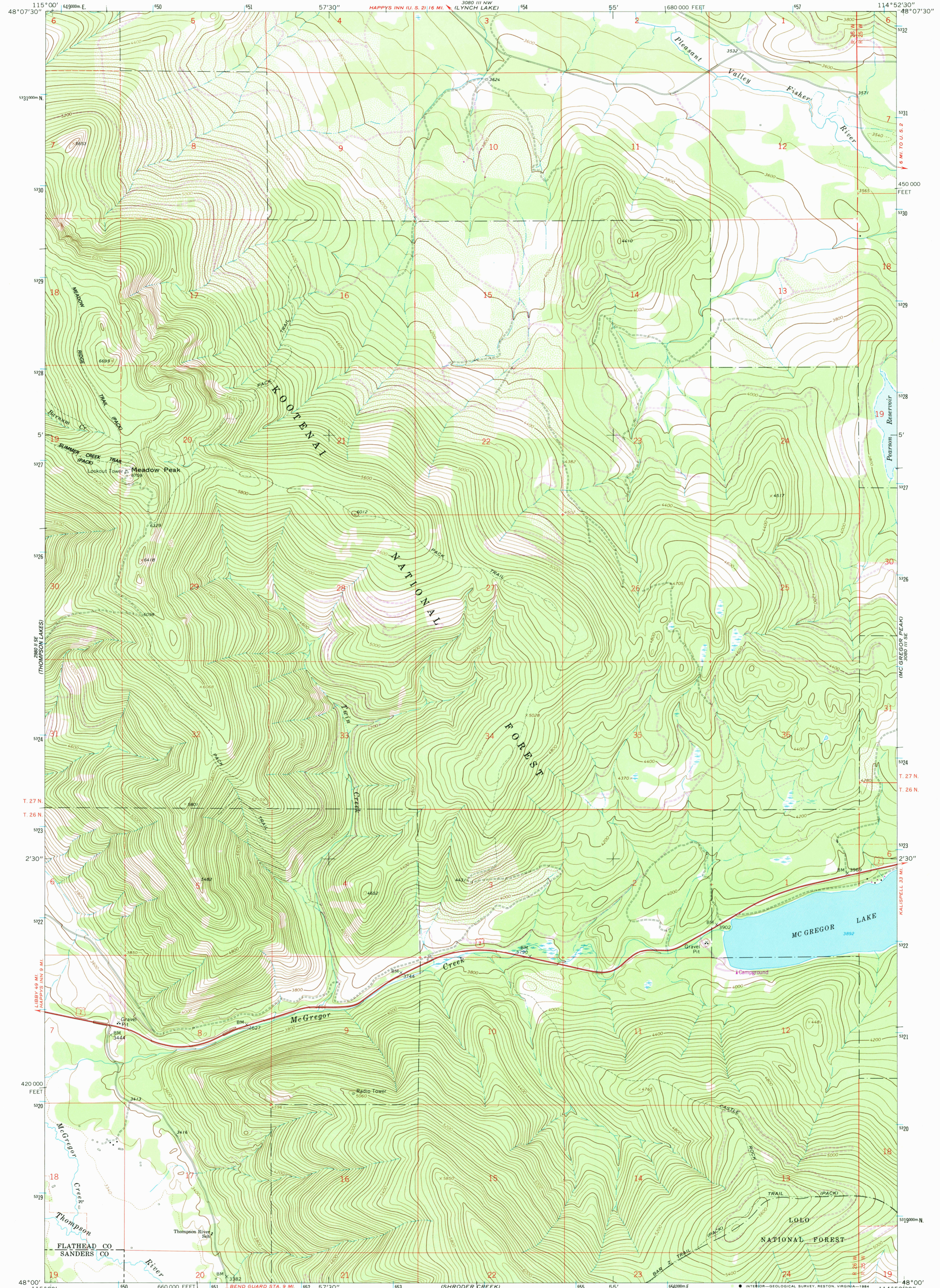


3080 III SW  
048° 07' 30" N

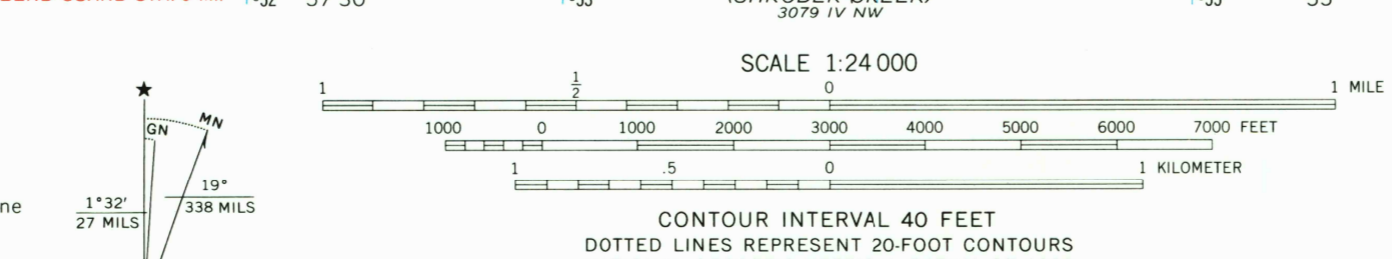
UNITED STATES  
DEPARTMENT OF THE INTERIOR  
GEOLOGICAL SURVEY

MEADOW PEAK QUADRANGLE  
MONTANA  
7.5 MINUTE SERIES (TOPOGRAPHIC)

3080 III SW  
048° 07' 30" N



Mapped, edited, and published by the Geological Survey  
Control by USGS and NOS/NOAA  
Topography by photogrammetric methods from aerial photographs taken 1963. Field checked 1964  
Polyconic projection. 1927 North American Datum 10,000-foot grid based on Montana coordinate system, north zone 1000-meter Universal Transverse Mercator grid ticks, zone 11, shown in blue  
Fine red dashed lines indicate selected fence lines  
There may be private inholdings within the boundaries of the National or State reservations shown on this map  
To place on the predicted North American Datum 1983 move the projection lines 12 meters north and 73 meters east as shown by dashed corner ticks



SCALE 1:24 000  
CONTOUR INTERVAL 40 FEET  
DOTTED LINES REPRESENT 20-FOOT CONTOURS  
NATIONAL GEODETIC VERTICAL DATUM OF 1929  
THIS MAP COMPLIES WITH NATIONAL MAP ACCURACY STANDARDS  
FOR SALE BY U. S. GEOLOGICAL SURVEY, DENVER, COLORADO 80225, OR RESTON, VIRGINIA 22092  
A FOLDER DESCRIBING TOPOGRAPHIC MAPS AND SYMBOLS IS AVAILABLE ON REQUEST

ROAD CLASSIFICATION  
Heavy-duty ——— Light-duty ———  
Unimproved dirt - - - - -  
U. S. Route □

QUADRANGLE LOCATION  
MONTANA

MEADOW PEAK, MONT.  
48114-AB-TF-024  
1964  
PHOTOREVISED 1983  
DMA 5080 III SW - SERIES V894

RETURN TO:  
USGS NMD HISTORICAL MAP ARCHIVES

MAR 20 1984