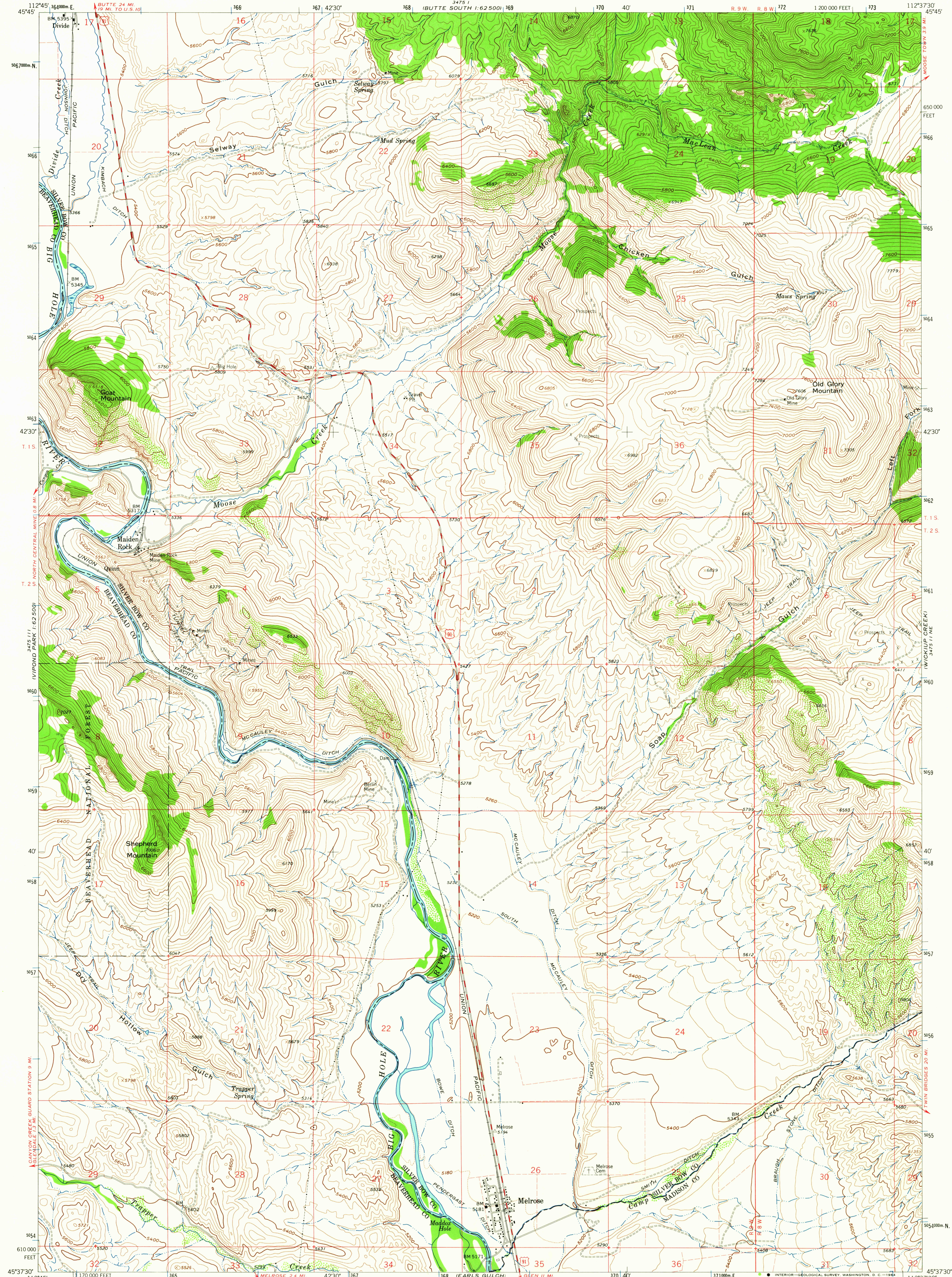


3425 11  
102500

UNITED STATES  
DEPARTMENT OF THE INTERIOR  
GEOLOGICAL SURVEY

MELROSE QUADRANGLE  
MONTANA  
75 MINUTE (TOPOGRAPHIC)

3425 11  
102500



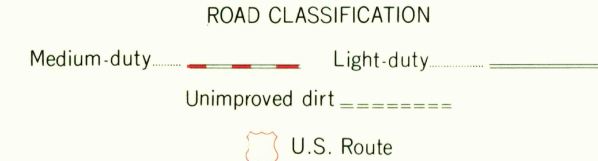
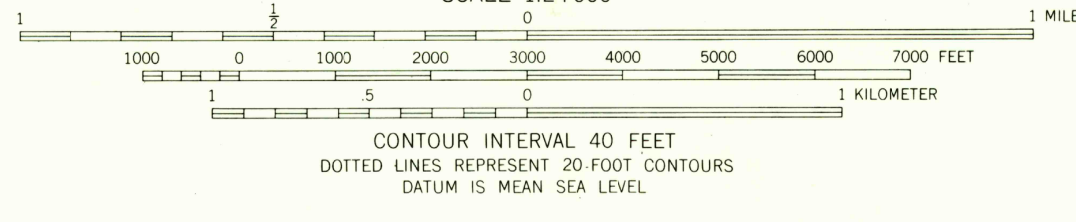
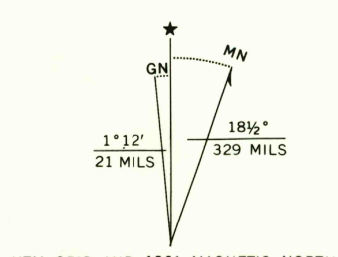
Mapped, edited, and published by the Geological Survey

Control by USGS and USC&GS

Topography by photogrammetric methods from aerial  
photographs taken 1956. Field checked 1961

Polyconic projection. 1927 North American datum  
10,000-foot grid based on Montana coordinate system, south zone  
1000 meter Universal Transverse Mercator grid ticks,  
zone 12, shown in blue

Fine red dashed lines indicate selected fence lines



THIS MAP COMPLIES WITH NATIONAL MAP ACCURACY STANDARDS  
FOR SALE BY U.S. GEOLOGICAL SURVEY, DENVER 25, COLORADO OR WASHINGTON 25, D.C.  
A FOLDER DESCRIBING TOPOGRAPHIC MAPS AND SYMBOLS IS AVAILABLE ON REQUEST

MELROSE, MONT.  
N4537 5 - W11237 5/7.5  
1961

AMS 3475 11 NW - SERIES V884

USGS  
Historical File  
Topographic Division

AUG 21 1964

2980

USGS  
TOPOGRAPHIC DIVISION