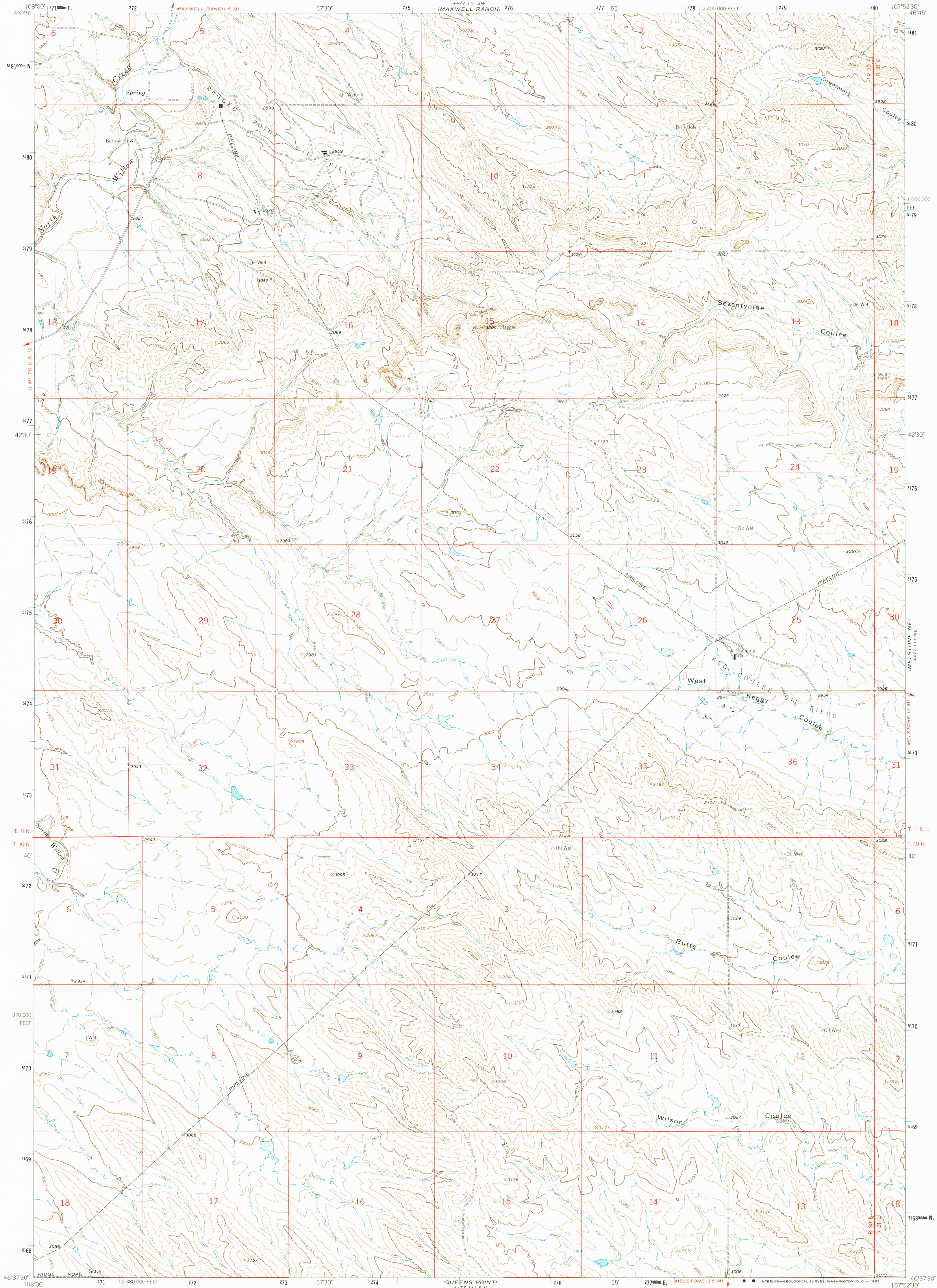
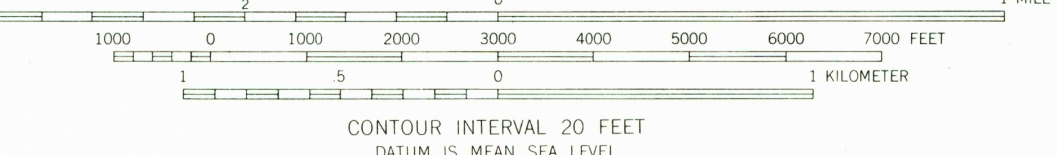
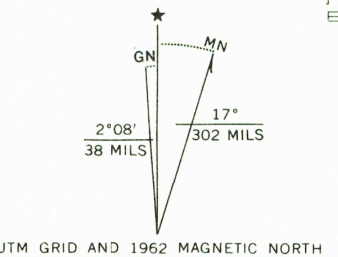


447111 NE
MOSBY SE



Mapped, edited, and published by the Geological Survey
Control by USGS and USC&GS
Topography by photogrammetric methods from aerial
photographs taken 1961. Field checked 1962
Polyconic projection, 1927 North American datum
10,000-foot grid based on Montana coordinate system, south zone
1000-meter Universal Transverse Mercator grid ticks,
zone 13, shown in blue
Fine red dashed lines indicate selected fence lines



ROAD CLASSIFICATION
Light-duty ———— Unimproved dirt - - - - -

THIS MAP COMPLIES WITH NATIONAL MAP ACCURACY STANDARDS
FOR SALE BY U.S. GEOLOGICAL SURVEY
DENVER, COLORADO 80225, OR RESTON, VIRGINIA 22092
A FOLDER DESCRIBING TOPOGRAPHIC MAPS AND SYMBOLS IS AVAILABLE ON REQUEST

MELSTONE NW, MONT.
N4637.5-W10752.5/7.5
1962

AMS 4471 111 NW—SERIES V894

