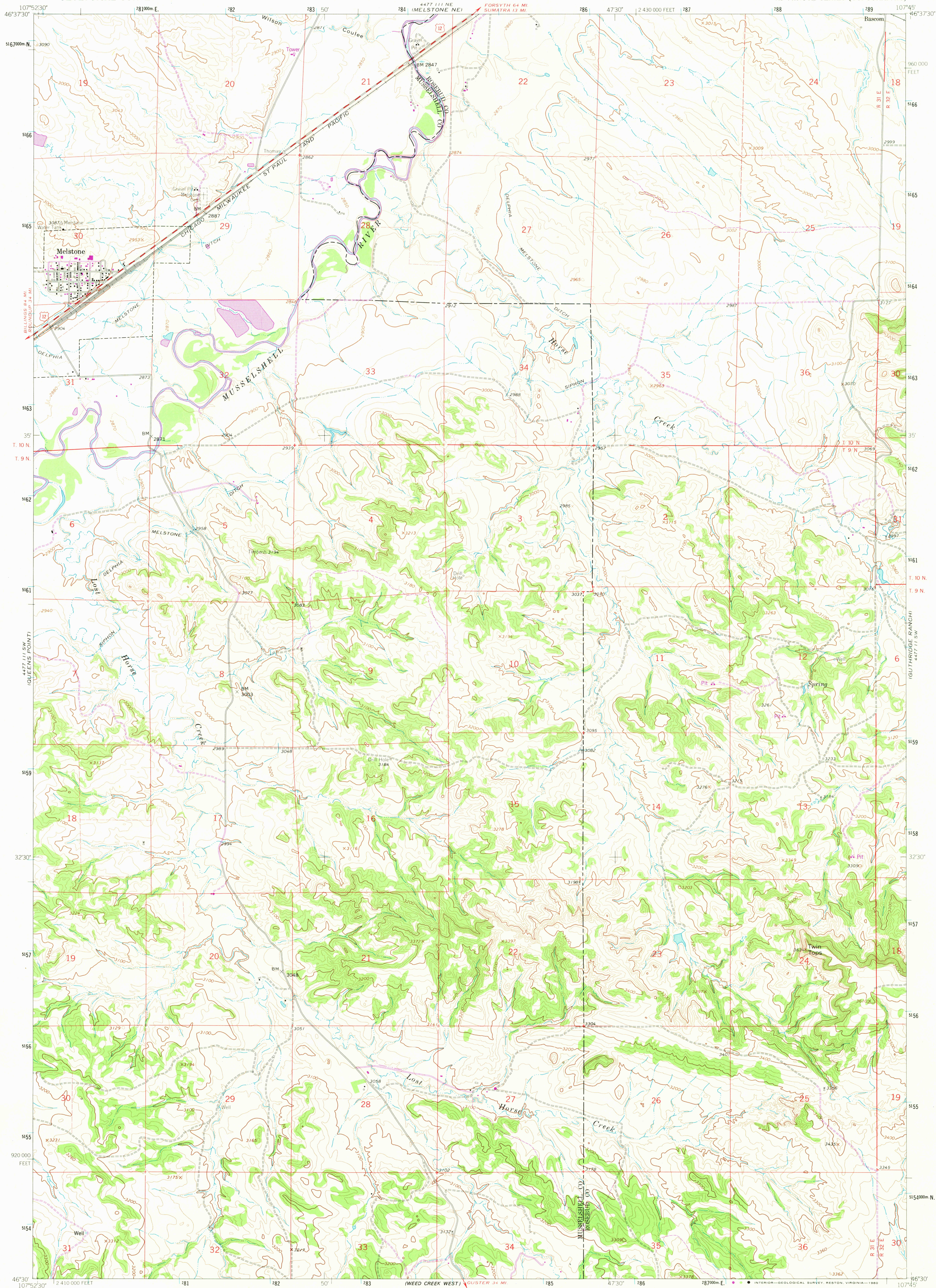


UNITED STATES
DEPARTMENT OF THE INTERIOR
GEOLOGICAL SURVEY

MELSTONE QUADRANGLE
MONTANA
7.5 MINUTE SERIES (TOPOGRAPHIC)



Mapped, edited, and published by the Geological Survey
Control by USGS and USC&GS

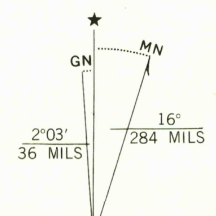
Topography by photogrammetric methods from aerial
photographs taken 1961. Field checked 1963

Polyconic projection. 1927 North American datum
10,000 foot grid based on Montana coordinate system, south zone
1000-meter Universal Transverse Mercator grid ticks,
zone 13, shown in blue

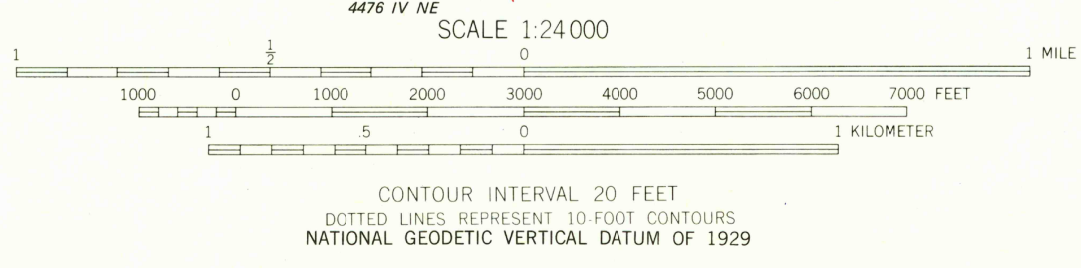
Fine red dashed lines indicate selected fence lines

To place on the predicted North American Datum 1983
move the projection lines 7 meters north and
52 meters east as shown by dashed corner ticks

Revisions shown in purple compiled from aerial photographs taken
1978. Map edited 1980. This information not field checked



UTM GRID AND 1980 MAGNETIC NORTH
DECLINATION AT CENTER OF SHEET



THIS MAP COMPLIES WITH NATIONAL MAP ACCURACY STANDARDS
FOR SALE BY U.S. GEOLOGICAL SURVEY, DENVER, COLORADO 80225, OR RESTON, VIRGINIA 22092
A FOLDER DESCRIBING TOPOGRAPHIC MAPS AND SYMBOLS IS AVAILABLE ON REQUEST



QUADRANGLE LOCATION

ROAD CLASSIFICATION
Medium-duty ——— Light-duty ———
Unimproved dirt =====
U.S. Route

USGS
Historical File
Topographic Division

MELSTONE, MONT.
N4630-W10745/7.5

1963
PHOTOREVISED 1980
DMA 4477 111 SE-SERIES V894

OCT 29 1980

1975