

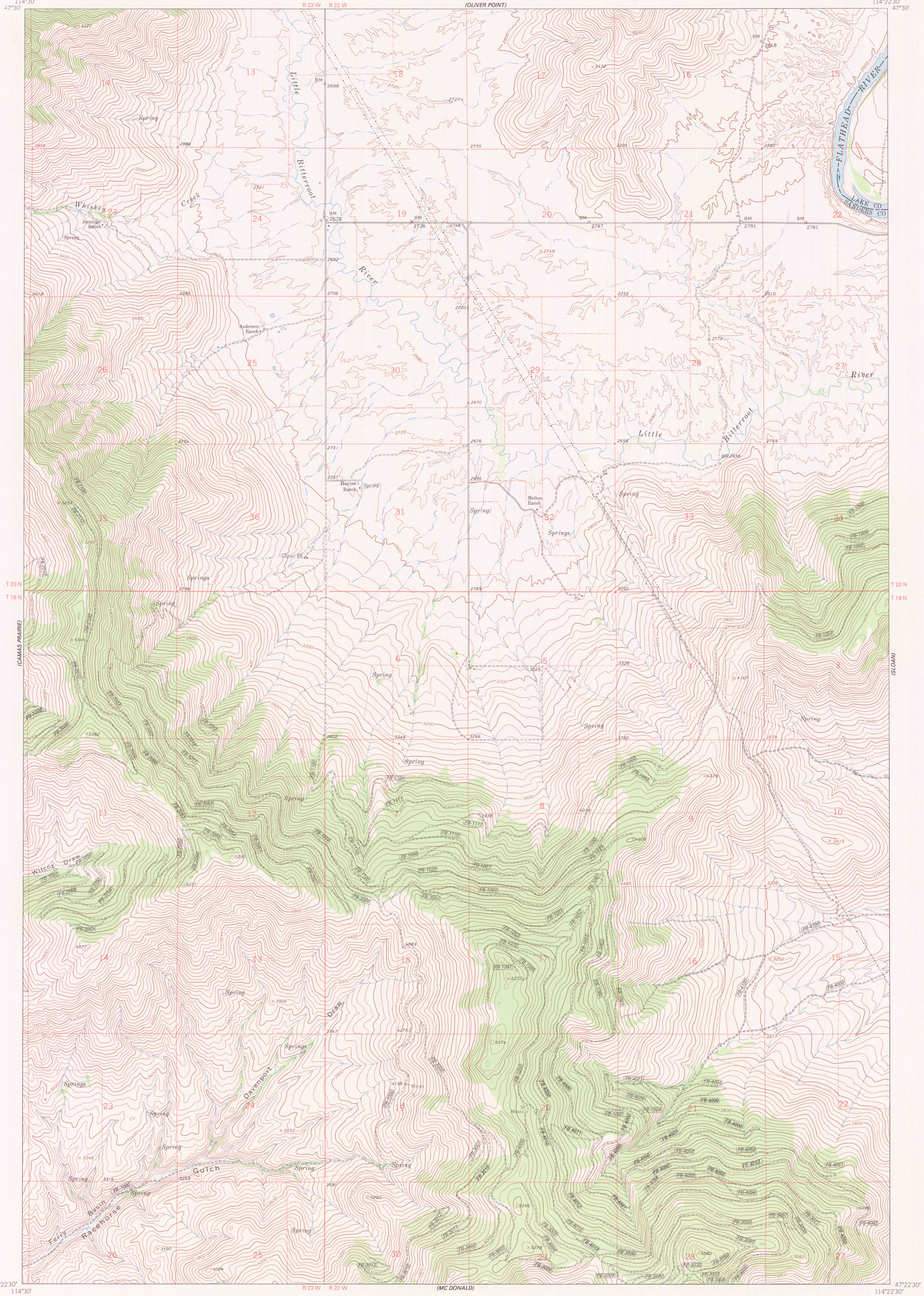
(MARKLE PASS)

MELTON RANCH QUADRANGLE
FLATHEAD INDIAN RESERVATION
7.5 MINUTE SERIES (TOPOGRAPHIC)

114°30'
47°30'

UNITED STATES
DEPARTMENT OF THE INTERIOR
BUREAU OF INDIAN AFFAIRS

(ROUND BUTTE)



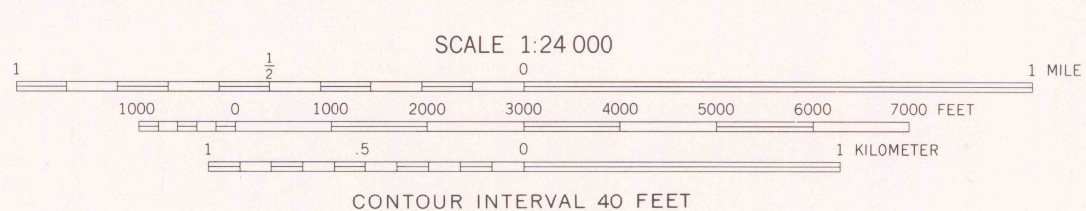
47°22'30"
114°30'

47°22'30"
114°22'30'

(PERMA)

LEGEND

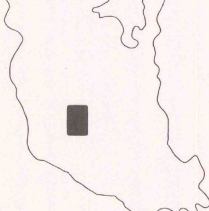
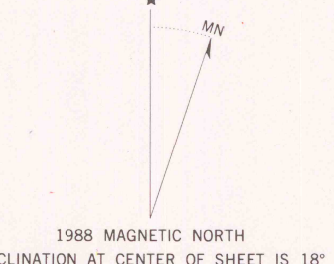
ROADS	BOUNDARIES
Paved road	County
Surface light duty or improved dirt road	Reservation
Unimproved dirt road	Tribal Wetlands
Four-wheel drive trail	Tribal Primitive Area
Route designation shield	Power transmission line
RAILROADS	CFI Plot location
Single track	Aerial photo centers 1980 & 1981 flight
LAND LINES	Indicated corner
Surveyed	Found corner
Protected	
Fence lines	



CONTOUR INTERVAL 40 FEET
DATUM IS MEAN SEA LEVEL
NATIONAL GEODETIC VERTICAL DATUM OF 1929
CONTROL BY USGS AND NOS/NOAA

Prepared by the Geological Survey for
the Bureau of Indian Affairs, Flathead Agency

Compiled in 1988 from USGS 1:24,000-scale quadrangle dated 1964
Revised from aerial photographs taken 1977 and other source data provided by BIA



RETURN TO:
USGS M&D HISTORICAL MAP ARCHIVES

MELTON RANCH, MONT.
FLATHEAD INDIAN RESERVATION

(DIXON)