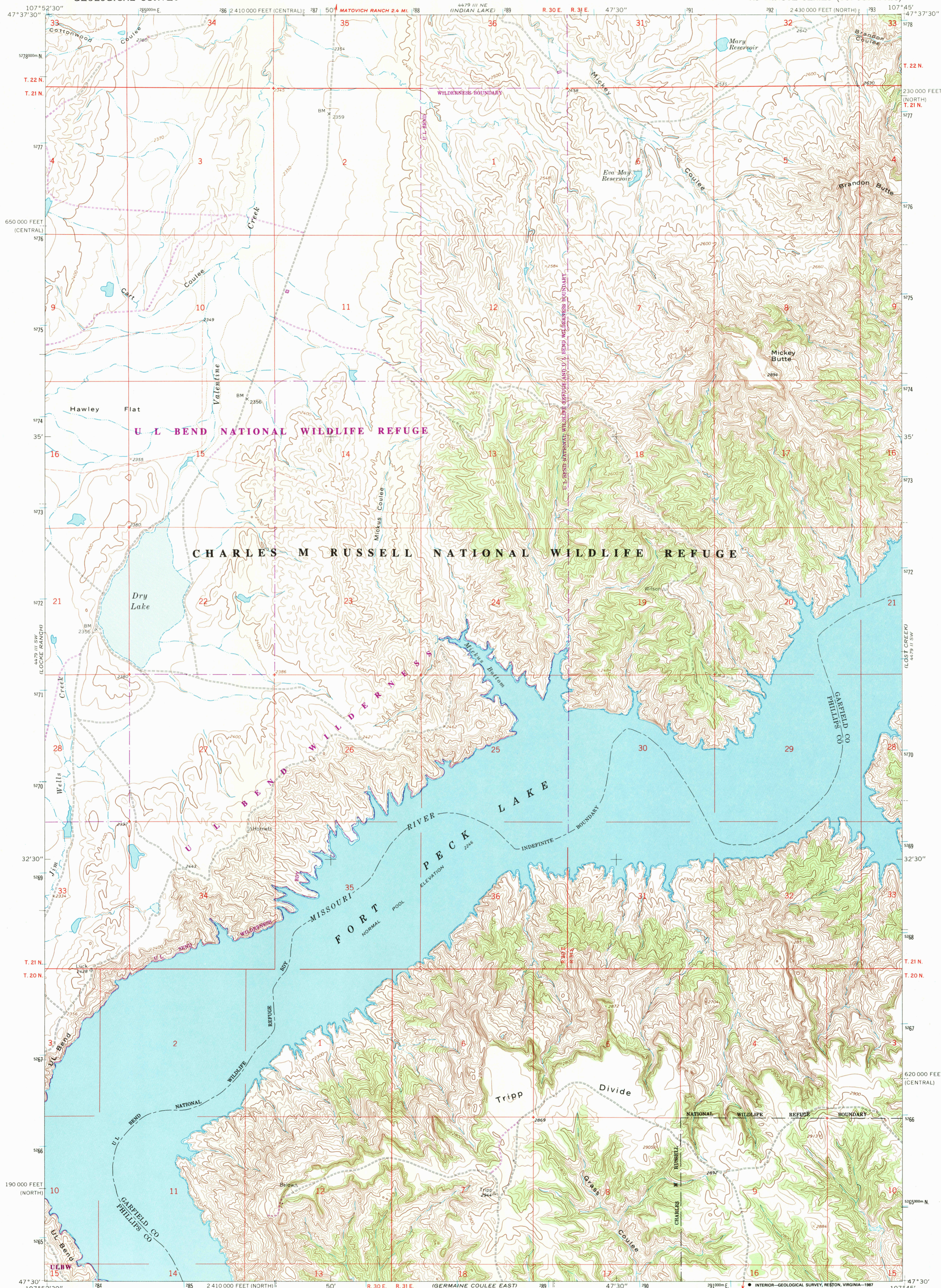


54° 59' 10" N
107° 52' 30" W
(6.5 A WIDE)

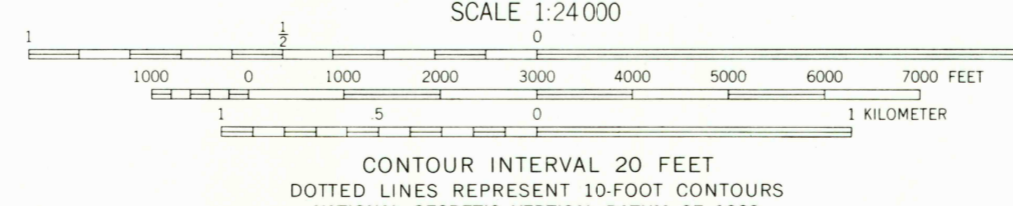
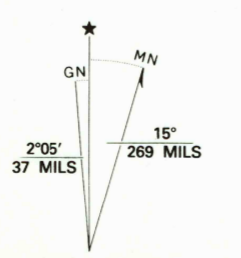
UNITED STATES
DEPARTMENT OF THE INTERIOR
GEOLOGICAL SURVEY

MICKEY BUTTE QUADRANGLE
MONTANA
7.5 MINUTE SERIES (TOPOGRAPHIC)

54° 59' 10" N
107° 52' 30" W
(GERMAN POINT)



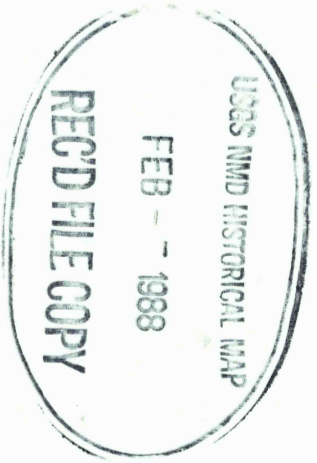
Maped, edited, and published by the Geological Survey as part of the Department of the Interior program for the development of the Missouri River Basin Control by USGS and USC&GS
Topography by photogrammetric methods from aerial photographs taken 1964. Field checked 1965
Polyconic projection. 1927 North American Datum
10,000-foot grids based on Montana coordinate system, north and central zones
1000-meter Universal Transverse Mercator grid ticks, zone 13, shown in blue
Fine red dashed lines indicate selected fence lines
Areas covered by dashed light-blue pattern are subject to controlled inundation to 2250 feet
To place on the predicted North American Datum 1983, move the projection lines 5 meters north and 51 meters east as shown by dashed corner ticks



MICKEY BUTTE, MONT.
47107-E7-TF-024

Revisions shown in purple compiled from aerial photographs taken 1982 and other sources
This information not field checked. Map edited 1987

1965
PHOTOREVISED 1987
DMA 4479 III SE-SERIES V994



GERMAINE COULEE WEST 1
4479 III SW
107° 52' 30" W

CAP ROCK BUTTE
4479 III SW
107° 52' 30" W