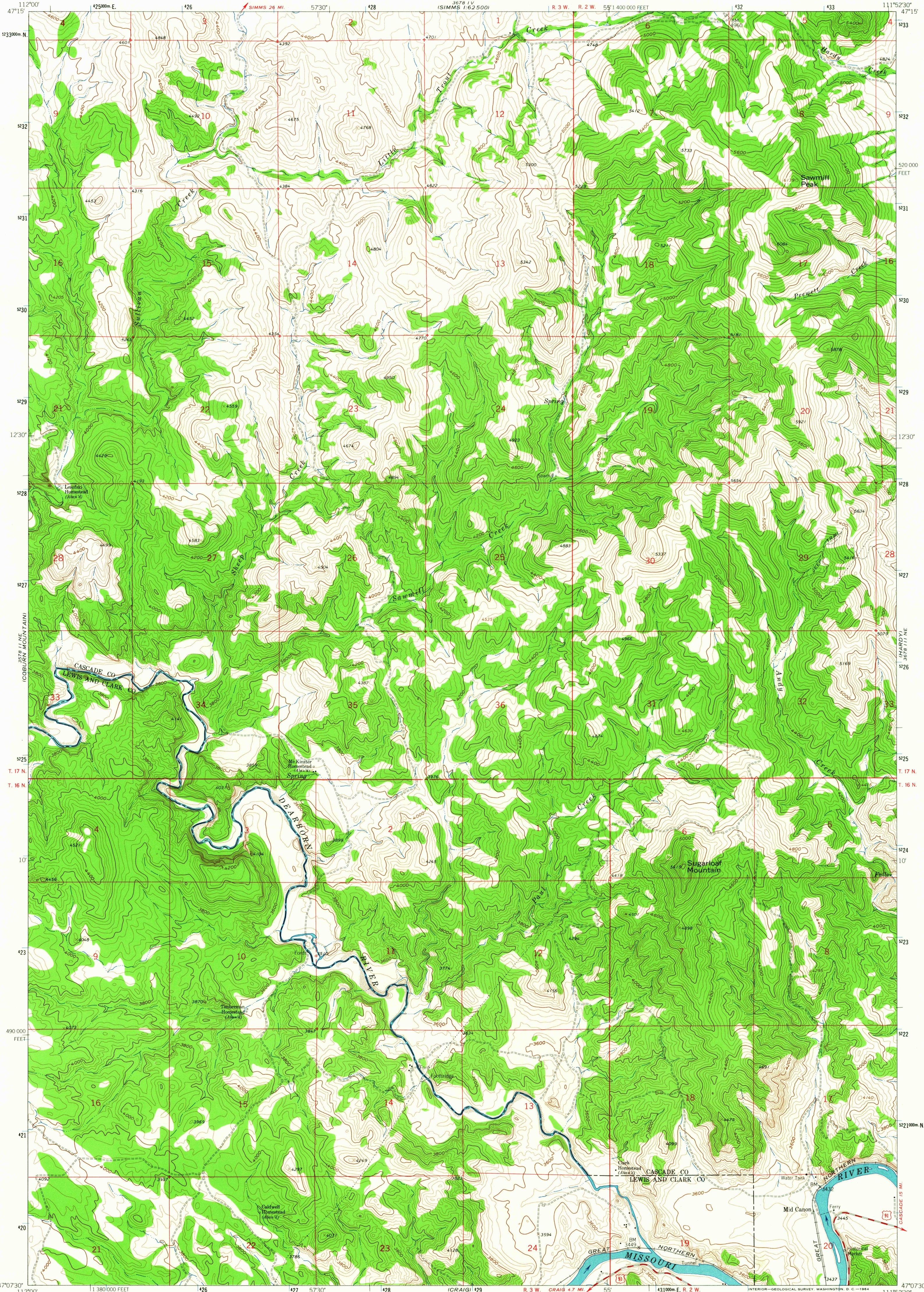
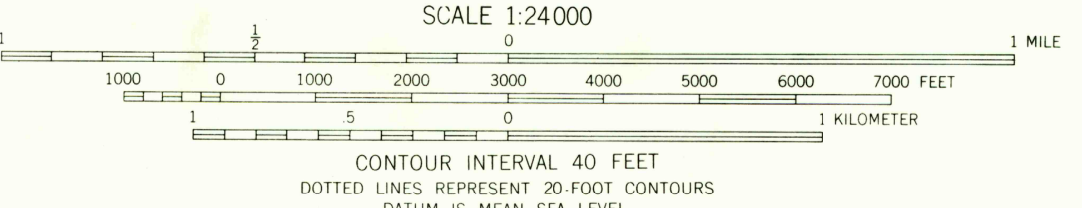
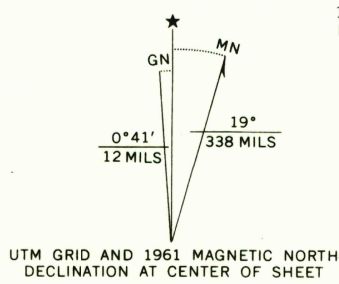


3678 IV
SIMMS 1:62,500



WOLF CREEK
3678 I, SE

Mapped, edited, and published by the Geological Survey
Control by USGS and USCS&GS
Topography by photogrammetric methods from aerial photographs taken 1956. Field checked 1961
Polyconic projection. 1927 North American datum. 10,000-foot grid based on Montana coordinate system, central zone. 1000-meter Universal Transverse Mercator grid ticks, zone 12, shown in blue.



CONTOUR INTERVAL 40 FEET
DOTTED LINES REPRESENT 20-FOOT CONTOURS
DATUM IS MEAN SEA LEVEL



ROAD CLASSIFICATION
Medium duty ——— Unimproved dirt - - - - -
U.S. Route

MID CANON, MONT.
N4707.5-W11152.5/7.5

1961
AMS 3678 III NW-SERIES V894

THIS MAP COMPLIES WITH NATIONAL MAP ACCURACY STANDARDS
FOR SALE BY U.S. GEOLOGICAL SURVEY, DENVER 25, COLORADO OR WASHINGTON 25, D.C.
A FOLDER DESCRIBING TOPOGRAPHIC MAPS AND SYMBOLS IS AVAILABLE ON REQUEST

USCS
Historical File
Topographic Division

THE SAWTEETH
3678 IV, SE

2650
APR 2 1964