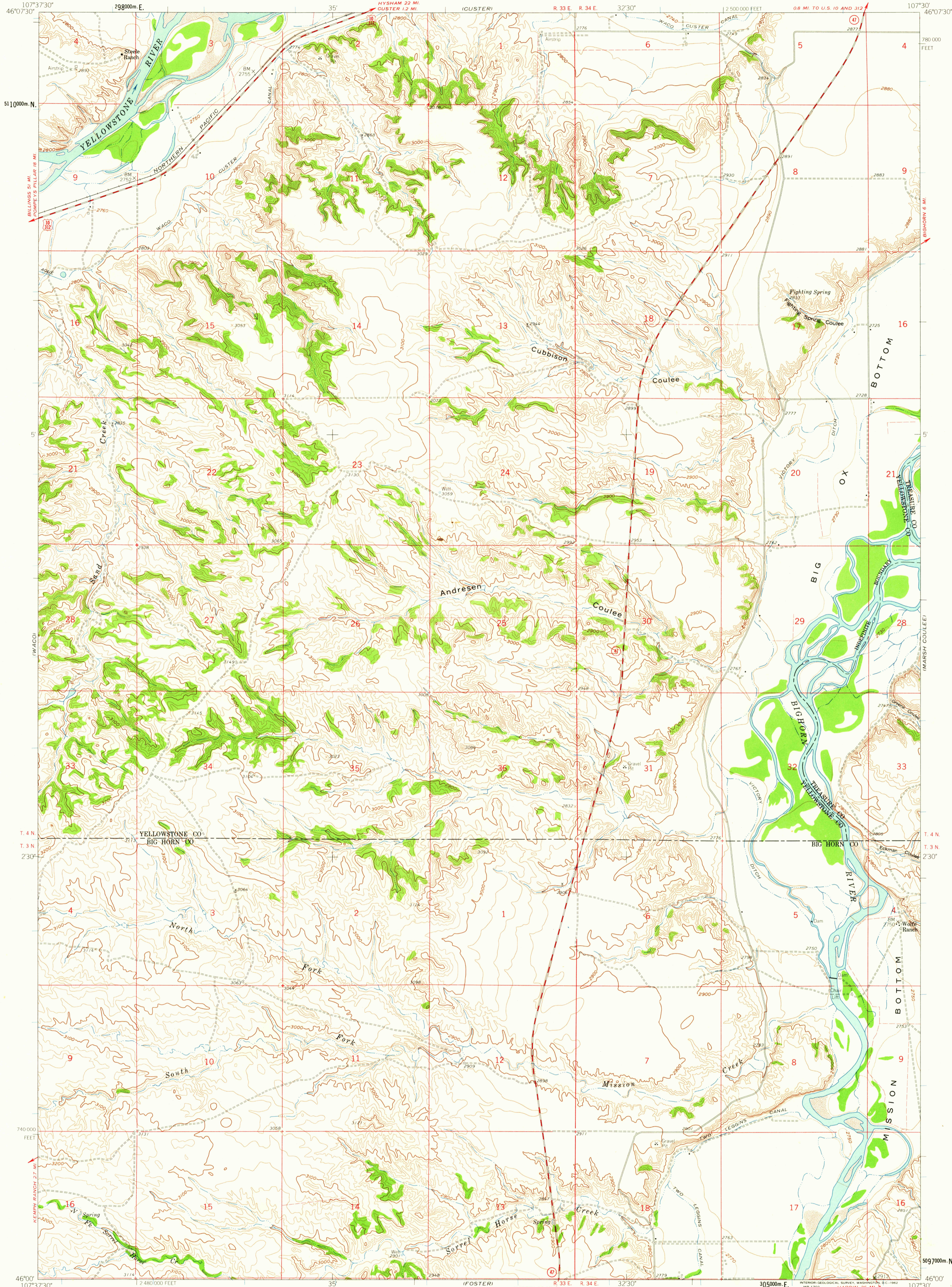


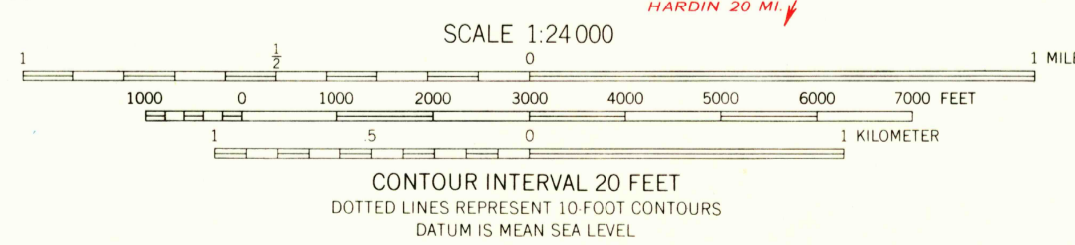
UNITED STATES
DEPARTMENT OF THE INTERIOR
GEOLOGICAL SURVEY

MISSION CREEK QUADRANGLE
MONTANA
7.5 MINUTE SERIES (TOPOGRAPHIC)



Mapped, edited, and published by the Geological Survey as part of the Department of the Interior program for the development of the Missouri River Basin
Control by USGS and USC&GS
Topography by photogrammetric methods from aerial photographs taken 1956. Field checked 1960
Polyconic projection. 1927 North American datum 10,000-foot grid based on Montana coordinate system, south zone
1000-meter Universal Transverse Mercator grid ticks, zone 13, shown in blue
Dashed land lines indicate approximate locations
Fine red dashed lines indicate selected fence and field lines where generally visible on aerial photographs
This information is unchecked

TRUE NORTH
MAGNETIC NORTH
APPROXIMATE MEAN DECLINATION, 1960



ROAD CLASSIFICATION
Medium-duty — Light-duty
Unimproved dirt
U.S. Route
State Route

THIS MAP COMPLIES WITH NATIONAL MAP ACCURACY STANDARDS
FOR SALE BY U.S. GEOLOGICAL SURVEY, DENVER 25, COLORADO OR WASHINGTON 25, D.C.
A FOLDER DESCRIBING TOPOGRAPHIC MAPS AND SYMBOLS IS AVAILABLE ON REQUEST

MISSION CREEK, MONT.
N4600-W10730/7.5
1960

U.S.G.S. FILE COPY TOPOGRAPHIC DIVISION
MAY - 2 1962
2005