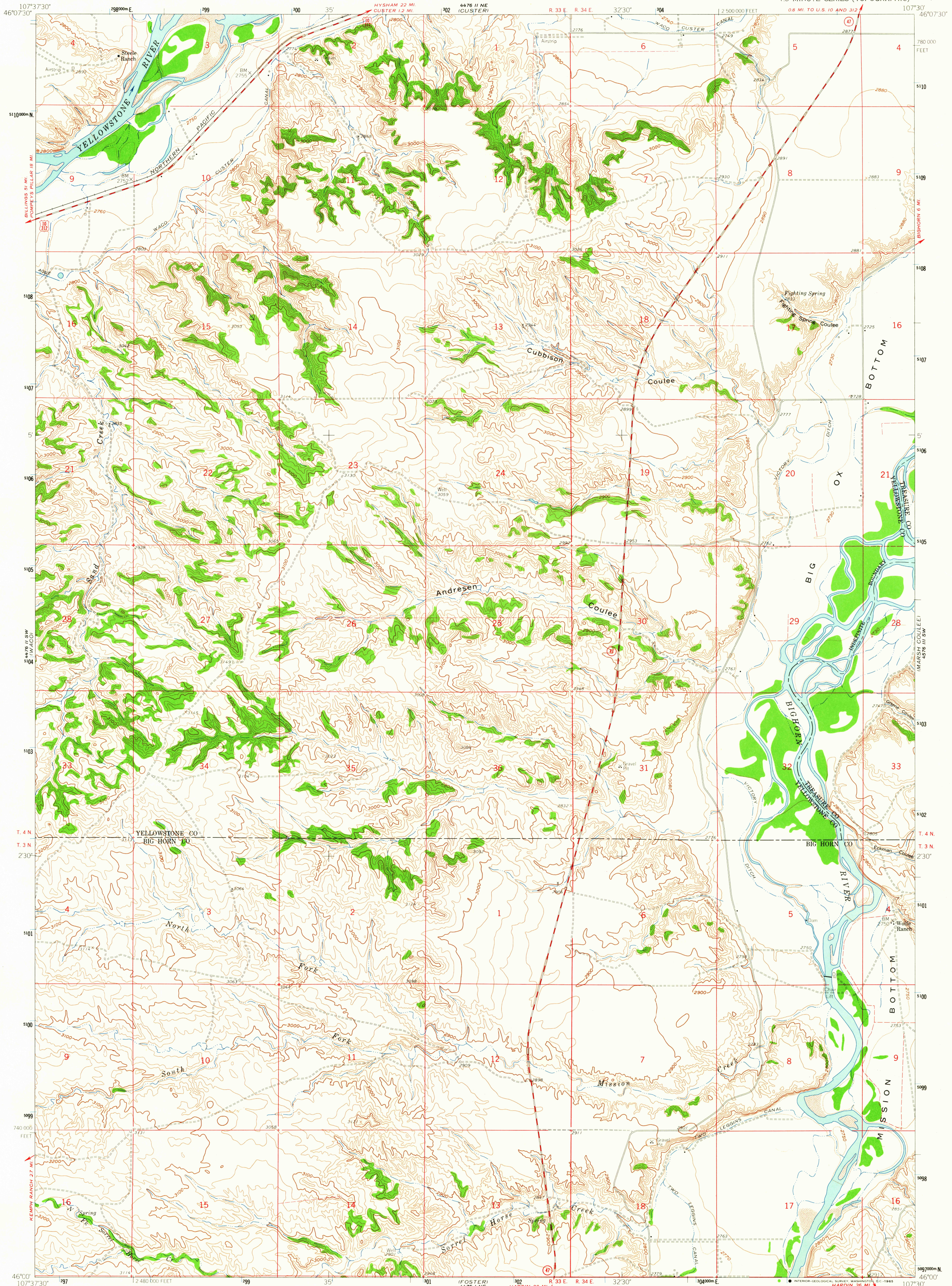
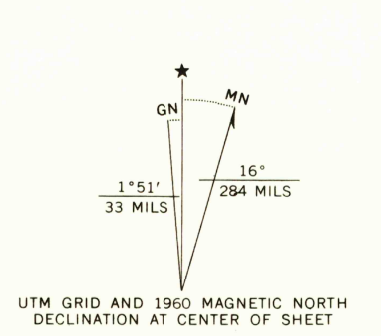


UNITED STATES
DEPARTMENT OF THE INTERIOR
GEOLOGICAL SURVEY

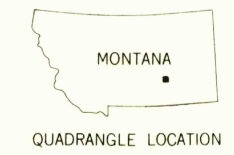
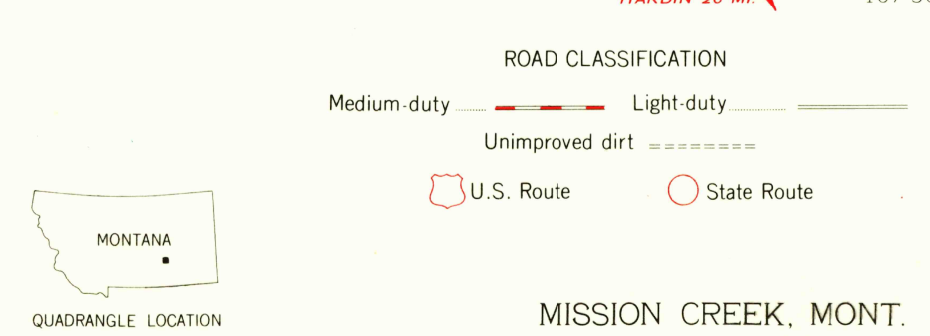
MISSION CREEK QUADRANGLE
MONTANA
7.5 MINUTE SERIES (TOPOGRAPHIC)



Mapped, edited, and published by the Geological Survey as part of the Department of the Interior program for the development of the Missouri River Basin Control by USGS and USC&GS
Topography by photogrammetric methods from aerial photographs taken 1956. Field checked 1960
Polyconic projection. 1927 North American datum 10,000-foot grid based on Montana coordinate system, south zone
1000 meter Universal Transverse Mercator grid ticks, zone 13, shown in blue
Dashed land lines indicate approximate locations
Fine red dashed lines indicate selected fence and field lines where generally visible on aerial photographs
This information is unchecked



SCALE 1:24,000
CONTOUR INTERVAL 20 FEET
DOTTED LINES REPRESENT 10 FOOT CONTOURS
DATUM IS MEAN SEA LEVEL
THIS MAP COMPLIES WITH NATIONAL MAP ACCURACY STANDARDS
FOR SALE BY U.S. GEOLOGICAL SURVEY, DENVER 25, COLORADO OR WASHINGTON 25, D.C.
A FOLDER DESCRIBING TOPOGRAPHIC MAPS AND SYMBOLS IS AVAILABLE ON REQUEST



MISSION CREEK, MONT.
N4600-W10730/75
1960
AMS 4476 II SE-SERIES Y894

USGS
Historical File
Topographic Division

MAR 17 1965

U.S.G.S.
FILE COPY
TOPOGRAPHIC DIVISION