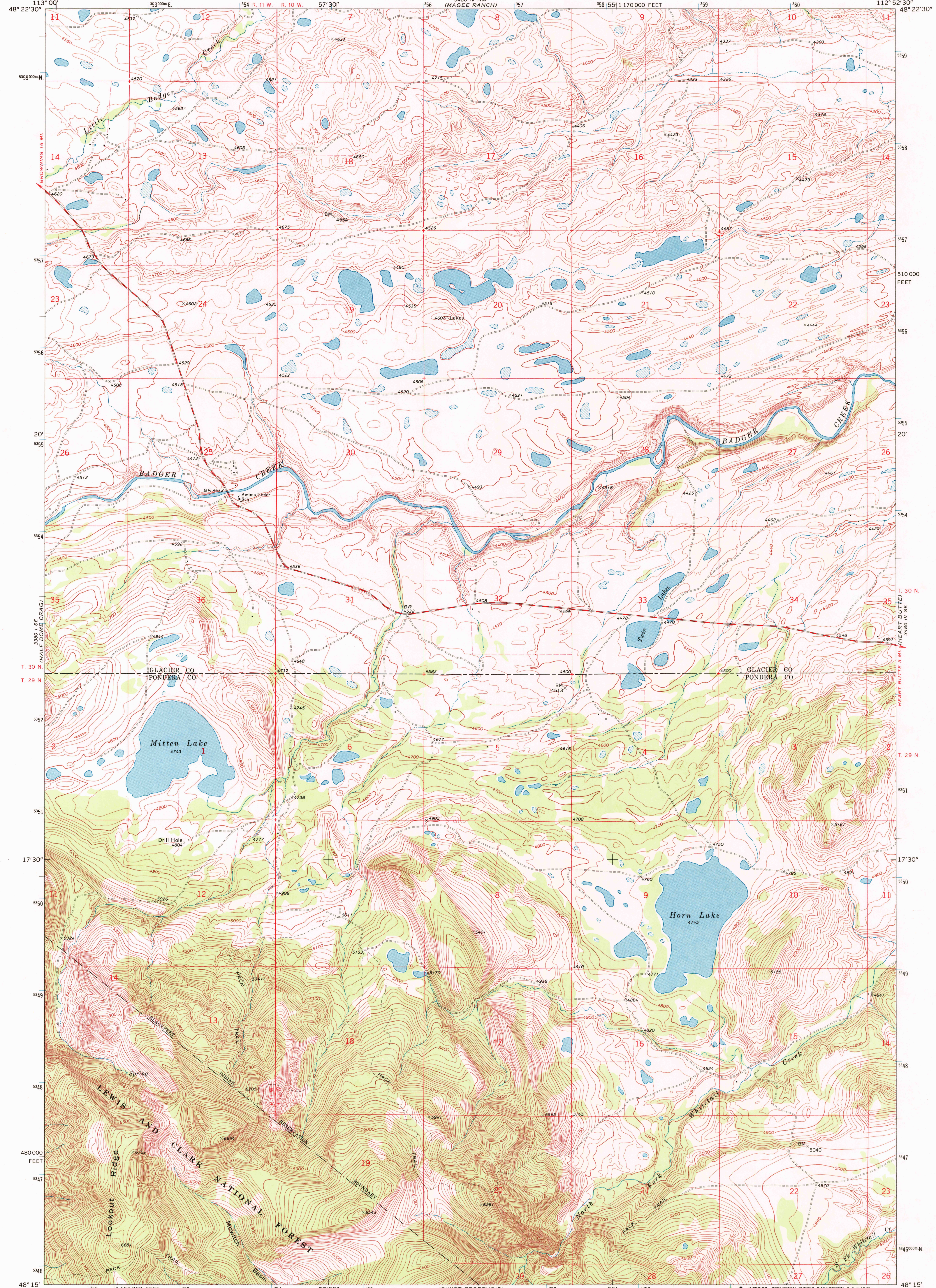
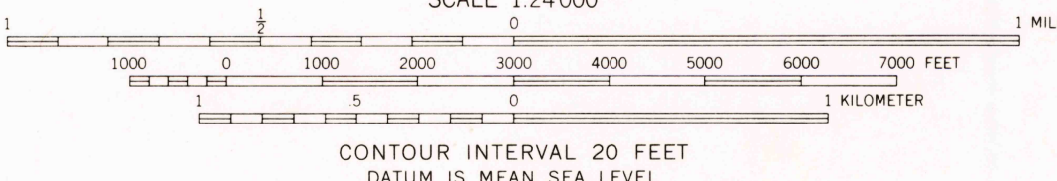
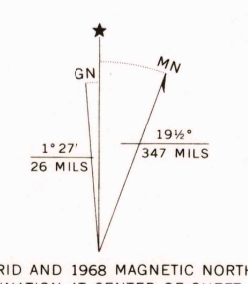


3380 I NE
1510 ROCK

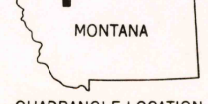
3380 V NE
WHITE MAN COULEE



Mapped, edited, and published by the Geological Survey
Control by USGS and USC&GS
Topography by photogrammetric methods from aerial photographs taken 1966. Field checked 1968
Polyconic projection. 1927 North American datum
10,000-foot grid based on Montana coordinate system, north zone
1000-meter Universal Transverse Mercator grid ticks, zone 12, shown in blue
Fine red dashed lines indicate selected fence lines
Where omitted, land lines have not been established



ROAD CLASSIFICATION
Secondary highway, all weather, Light-duty road, all weather, improved surface
Unimproved road, fair or dry weather



MITTEN LAKE, MONT.
N4815-W11252.5/7.5

THIS MAP COMPLIES WITH NATIONAL MAP ACCURACY STANDARDS
FOR SALE BY U. S. GEOLOGICAL SURVEY, DENVER, COLORADO 80225, OR WASHINGTON, D. C. 20242
A FOLDER DESCRIBING TOPOGRAPHIC MAPS AND SYMBOLS IS AVAILABLE ON REQUEST

1968
AMS 3480 IV SW - SERIES V894

USGS
HISTORICAL FILE
TOPOGRAPHIC DIVISION

JUN 26 1972
2760