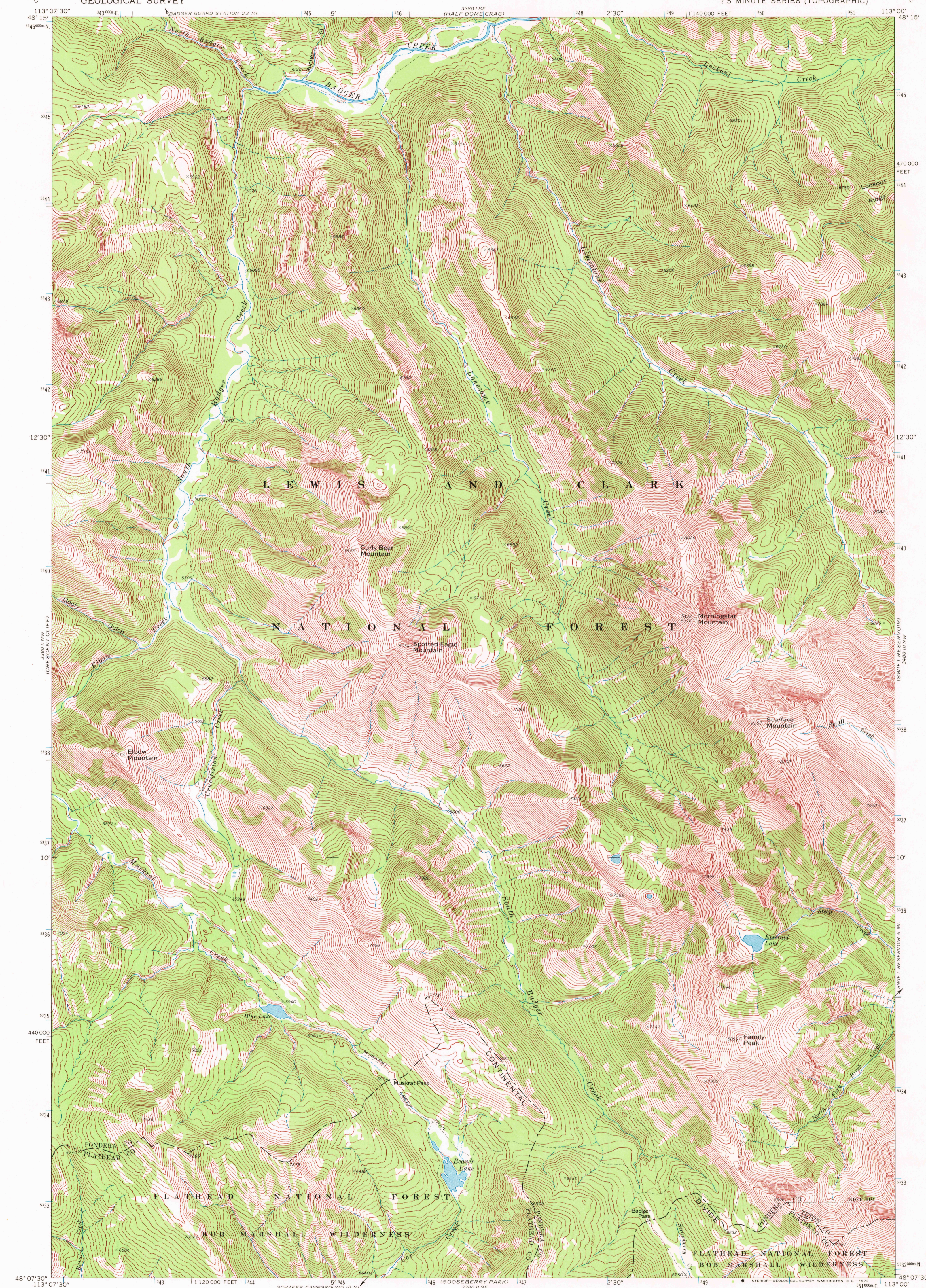


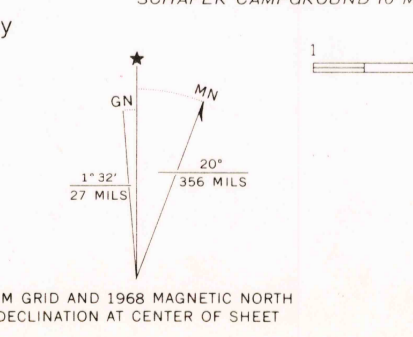
3380 (SW)
(VALE GREEN)

380 (SE)
(MITTEN LAKE)



113° 07' 30" 48° 15' 546000 N
BADGER GUARD STATION 2.3 MI.
3380 (SE) (HALF DOME CRAG)
145 5' 146 2' 30" 148 2' 30" 149 1140000 FEET 150 113° 00' 48° 15'
545
544
543
542
12' 30"
541
540
538
537
10'
536
535
440000 FEET
534
533
48° 07' 30" 113° 07' 30"
SCHAFER CAMPGROUND 10 MI.
SCALE 1:24000
1 0 1000 2000 3000 4000 5000 6000 7000 FEET
1 0 1 2 3 4 5 6 7 8 9 10 KILOMETER
CONTOUR INTERVAL 40 FEET
DATUM IS MEAN SEA LEVEL
ROAD CLASSIFICATION
Trails
MONTANA
QUADRANGLE LOCATION
MORNINGSTAR MOUNTAIN, MONT.
N4807.5-W11300/7.5
1968
AMS 3380 II NE-SERIES V894

Mapped, edited, and published by the Geological Survey
Control by USGS and USC&GS
Topography by photogrammetric methods from aerial photographs taken 1966. Field checked 1968
Polyconic projection. 1927 North American datum
10,000-foot grid based on Montana coordinate system, north zone
1000-meter Universal Transverse Mercator grid ticks, zone 12, shown in blue
Land lines have not been established in this area



THIS MAP COMPLIES WITH NATIONAL MAP ACCURACY STANDARDS
FOR SALE BY U. S. GEOLOGICAL SURVEY, DENVER, COLORADO 80225, OR WASHINGTON, D. C. 20242
A FOLDER DESCRIBING TOPOGRAPHIC MAPS AND SYMBOLS IS AVAILABLE ON REQUEST

JAN 21 1972
2285

USGS
HISTORICAL FILE
TOPOGRAPHIC DIVISION