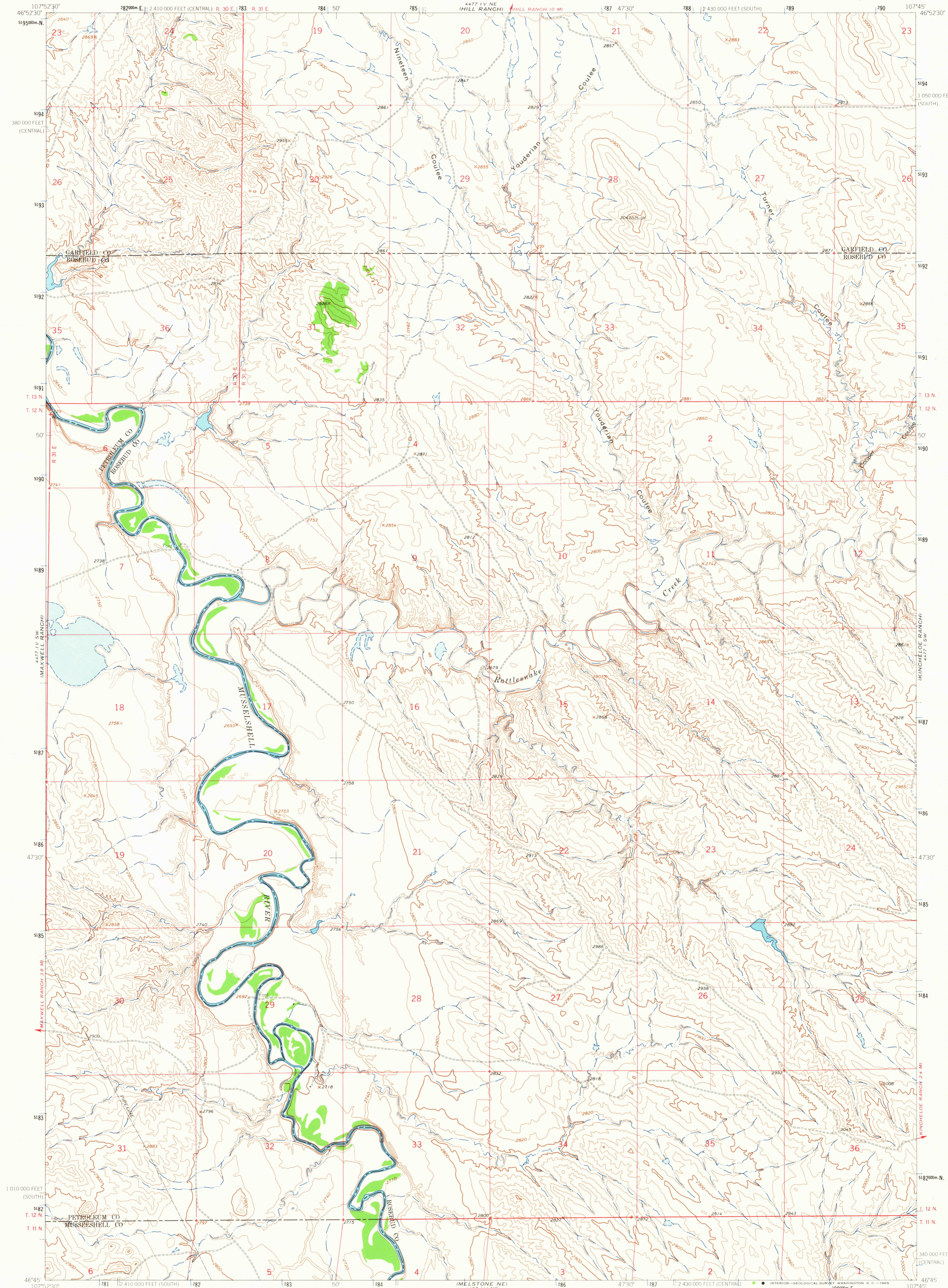
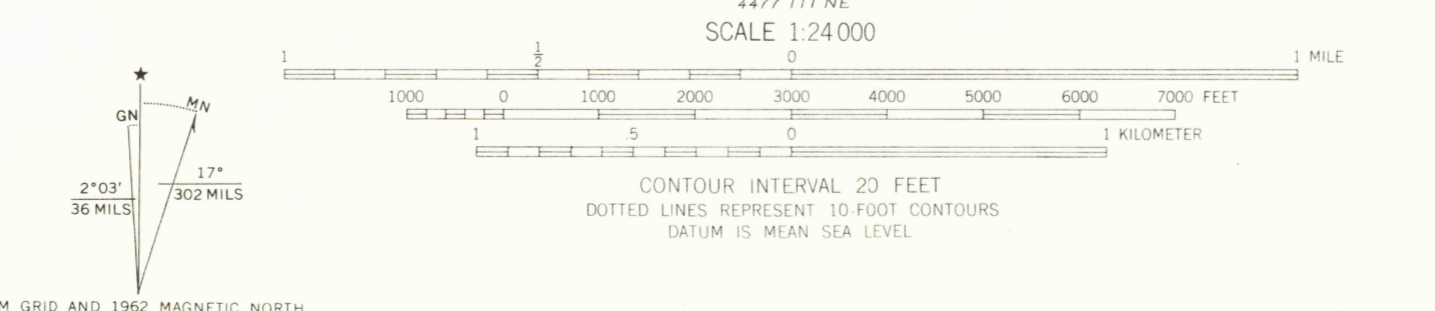


UNITED STATES  
DEPARTMENT OF THE INTERIOR  
GEOLOGICAL SURVEY

MOSBY SE QUADRANGLE  
MONTANA  
7.5 MINUTE SERIES (TOPOGRAPHIC)



Mapped, edited, and published by the Geological Survey  
Control by USGS and USC&GS  
Topography by photogrammetric methods from aerial photographs taken 1961. Field checked 1962  
Polyconic projection. 1927 North American datum. 10,000-foot grid based on Montana coordinate system, south and central zones. 1000-meter Universal Transverse Mercator grid ticks, zone 13, shown in blue.  
Fine red dashed lines indicate selected fence lines.



ROAD CLASSIFICATION  
Unimproved dirt -----

MOSBY SE, MONT.  
N4645-W10745/7.5  
1962

THIS MAP COMPLIES WITH NATIONAL MAP ACCURACY STANDARDS  
FOR SALE BY U.S. GEOLOGICAL SURVEY, DENVER 25, COLORADO OR WASHINGTON 25, D.C.  
A FOLDER DESCRIBING TOPOGRAPHIC MAPS AND SYMBOLS IS AVAILABLE ON REQUEST

USGS  
Historical File  
Topographic Division

2325  
APR 8 1965  
U.S.G.S.  
FILE COPY  
TOPOGRAPHIC DIVISION