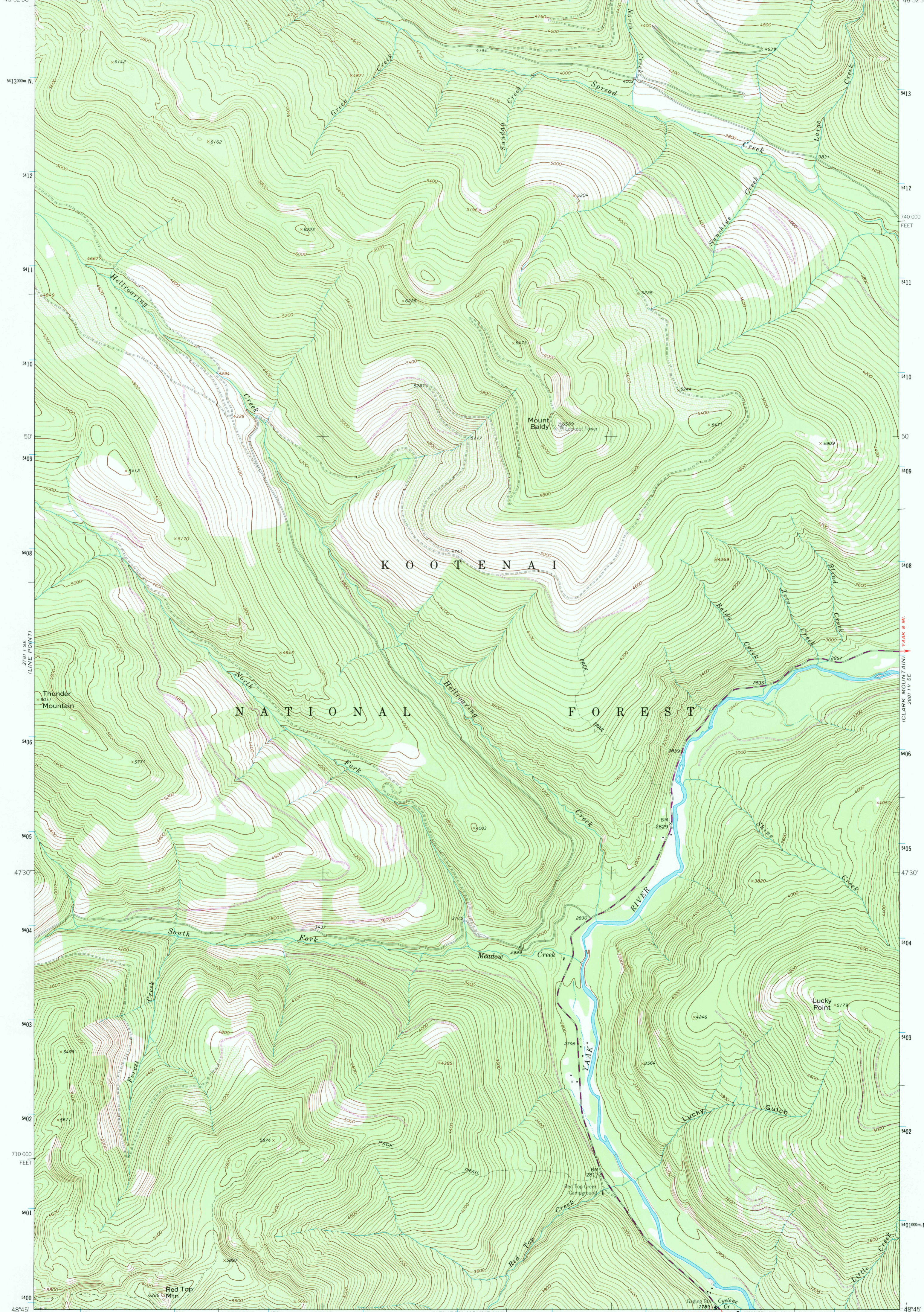


116°00' 5740000 E. 575 576 5730' 2881 IV NW (NORTHWEST PEAK) 579 55 580 1460 000 FEET 581 115°52'30" 48°52'30"



Mapped, edited, and published by the Geological Survey

Control by USGS and NOS/NOAA

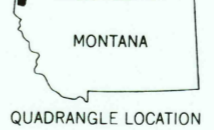
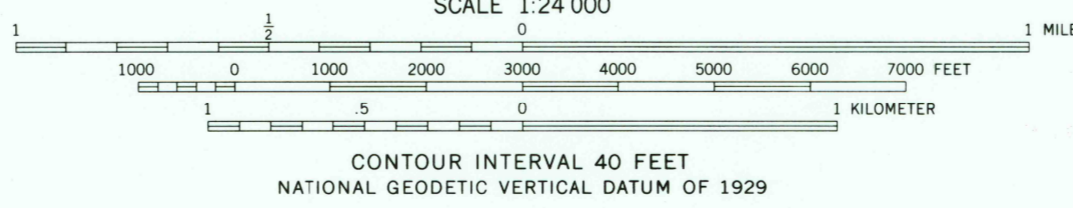
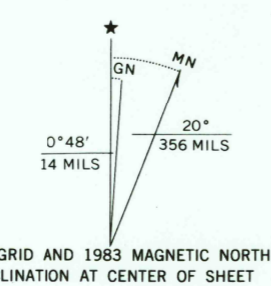
Topography by photogrammetric methods from aerial photographs taken 1962. Field checked 1963

Polycyclic projection: 1927 North American Datum
10,000-foot grid based on Montana coordinate system, north zone
1000-meter Universal Transverse Mercator grid ticks, zone 11, shown in blue

Land lines have not been established in this area

There may be private inholdings within the boundaries of the National or State reservations shown on this map

To place on the predicted North American Datum 1983 move the projection lines 11 meters north and 75 meters east as shown by dashed corner ticks



ROAD CLASSIFICATION

Light-duty	Unimproved dirt
Secondary highway, hard surface	

MOUNT BALDY, MONT.
48115-G8-TF-024
1963
PHOTOREVISED 1983
DMA 2881 IV SW-SERIES V894

THIS MAP COMPLIES WITH NATIONAL MAP ACCURACY STANDARDS
FOR SALE BY U. S. GEOLOGICAL SURVEY, DENVER, COLORADO 80225, OR RESTON, VIRGINIA 22092
A FOLDER DESCRIBING TOPOGRAPHIC MAPS AND SYMBOLS IS AVAILABLE ON REQUEST

Revisions shown in purple and woodland compiled from aerial photographs taken 1982 and other source data. Partial field check by U.S. Forest Service. Map edited 1983

MAR 30 1984

RETURN TO:
USGS NMD HISTORICAL MAP ARCHIVES