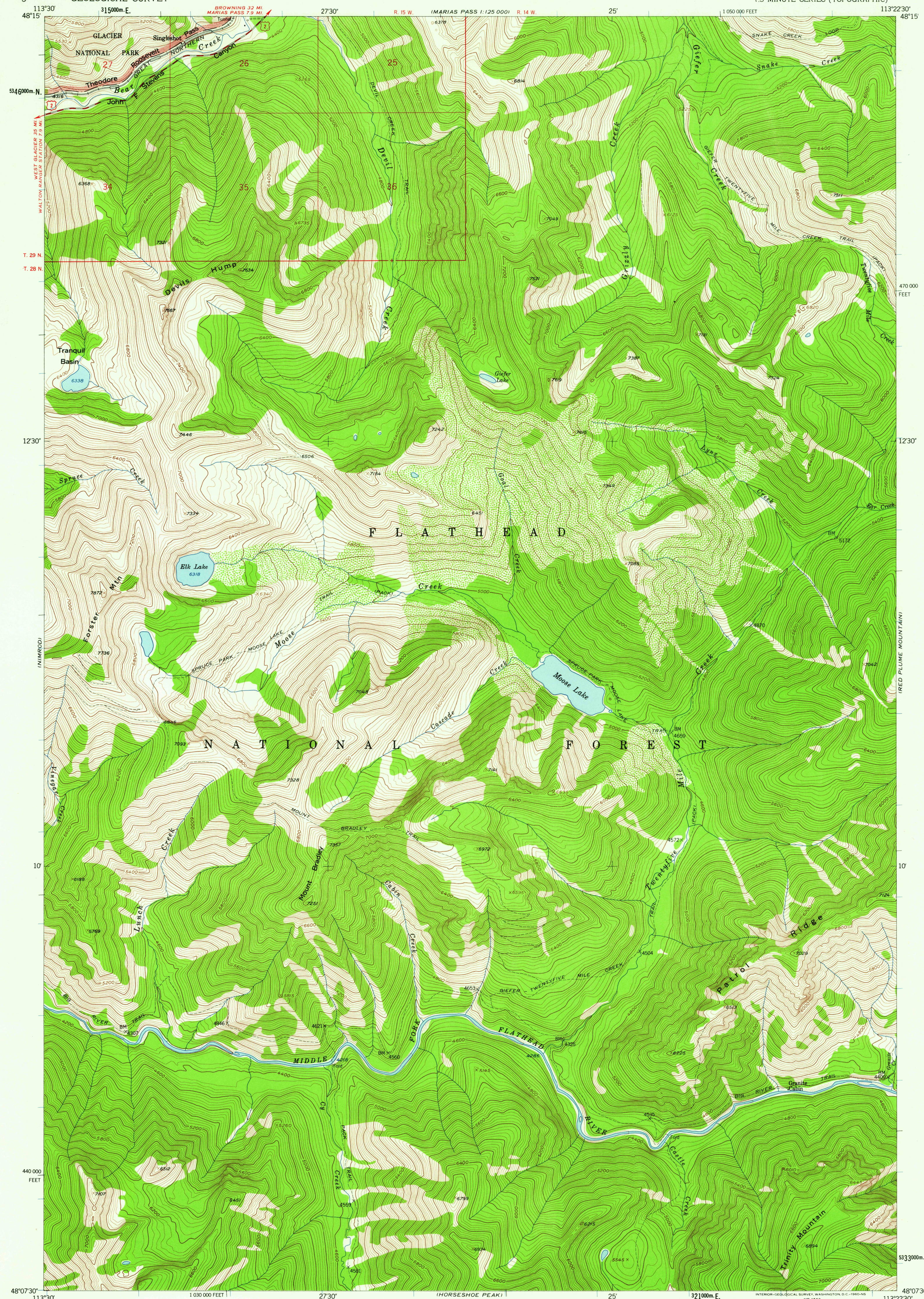
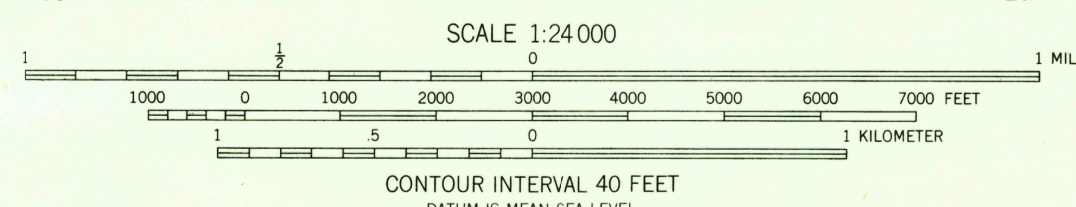
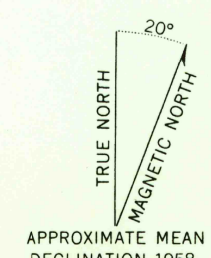


MARIAS PASS
1:125 000



Mapped, edited, and published by the Geological Survey
Control by USGS and USC&GS
Topography from aerial photographs by photogrammetric methods
Aerial photographs taken 1954-1955. Field check 1958
Polyconic projection, 1927 North American datum
10,000-foot grid based on Montana coordinate system,
north zone
1000-meter Universal Transverse Mercator grid ticks,
zone 12, shown in blue
Land lines unsurveyed except in T. 29 N.-R. 15 W.
Unchecked elevations are shown in brown



ROAD CLASSIFICATION
Medium-duty ———— Unimproved dirt - - - - -
U.S. Route

MOUNT BRADLEY, MONT.
N4807.5-W11322.5/7.5
1958

THIS MAP COMPLIES WITH NATIONAL MAP ACCURACY STANDARDS
FOR SALE BY U.S. GEOLOGICAL SURVEY, DENVER 25, COLORADO OR WASHINGTON 25, D. C.
A FOLDER DESCRIBING TOPOGRAPHIC MAPS AND SYMBOLS IS AVAILABLE ON REQUEST

USGS
Historical File
Topographic Division

U.S.G.S.
FILE COPY
TOPOGRAPHIC DIVISION

FEB - 4 1960

2020