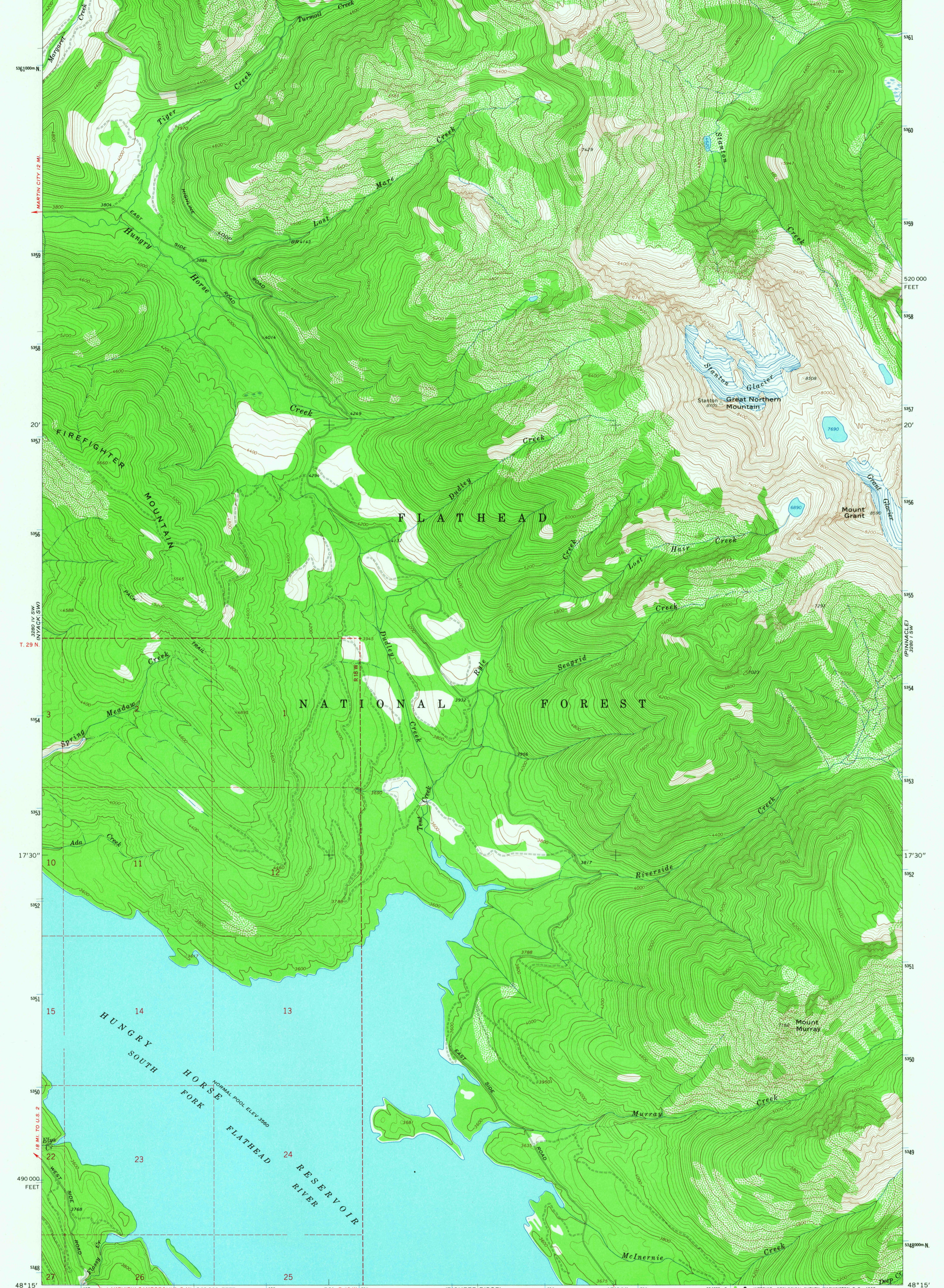
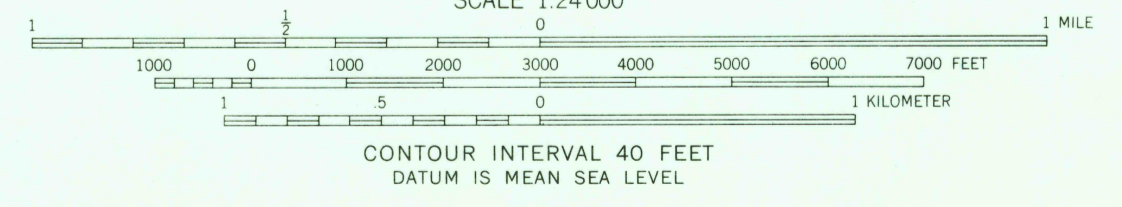
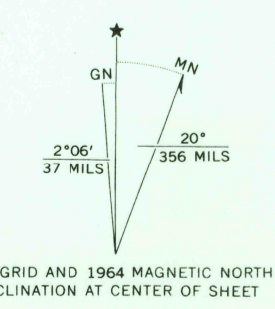


113° 52' 30" 2880' 0" E 789 790 50' 791 3280' 0" NE (NYACK) 792 793 47' 30" 794 960 000 FEET 795 113° 45' 48" 22' 30"



Mapped, edited, and published by the Geological Survey  
Control by USGS and USC&GS  
Topography by photogrammetric methods from aerial photographs taken 1963. Field checked 1964  
Polyconic projection. 1927 North American datum  
10,000-foot grid based on Montana coordinate system, north zone  
1000-meter Universal Transverse Mercator grid ticks, zone 12, shown in blue  
Where omitted, land lines have not been established



ROAD CLASSIFICATION  
Light-duty ————— Unimproved dirt - - - - -

MOUNT GRANT, MONT.  
N4815—W11345/7.5  
1964

U.S.G.S.  
FINE COPY  
TOPOGRAPHIC DIVISION

USGS  
Historical File  
Topographic Division

THIS MAP COMPLIES WITH NATIONAL MAP ACCURACY STANDARDS  
FOR SALE BY U.S. GEOLOGICAL SURVEY, DENVER, COLORADO 80225, OR WASHINGTON, D. C. 20242  
A FOLDER DESCRIBING TOPOGRAPHIC MAPS AND SYMBOLS IS AVAILABLE ON REQUEST

2860  
1 1068  
CPD