

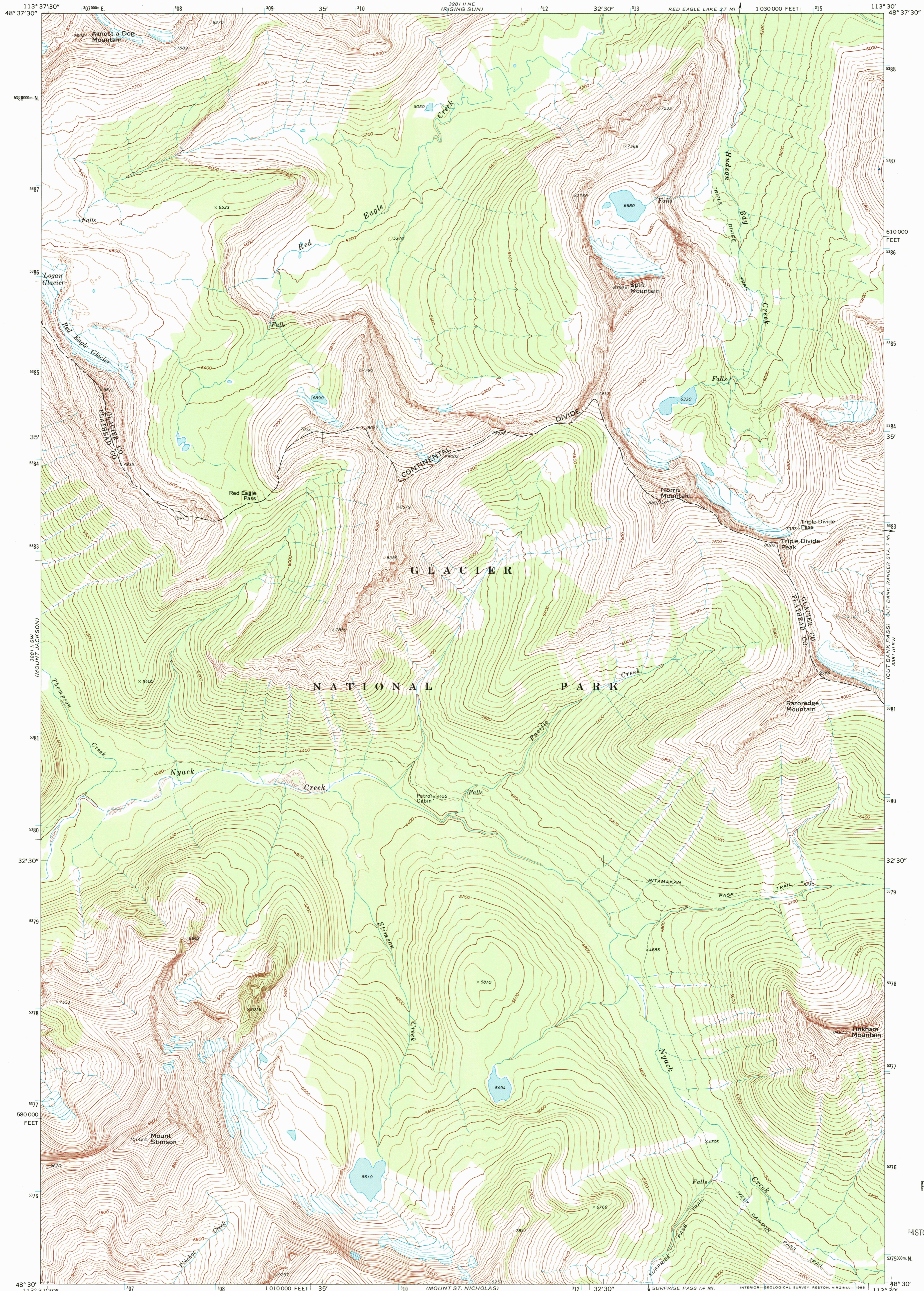
328 II NW
(LOGAN PASS)



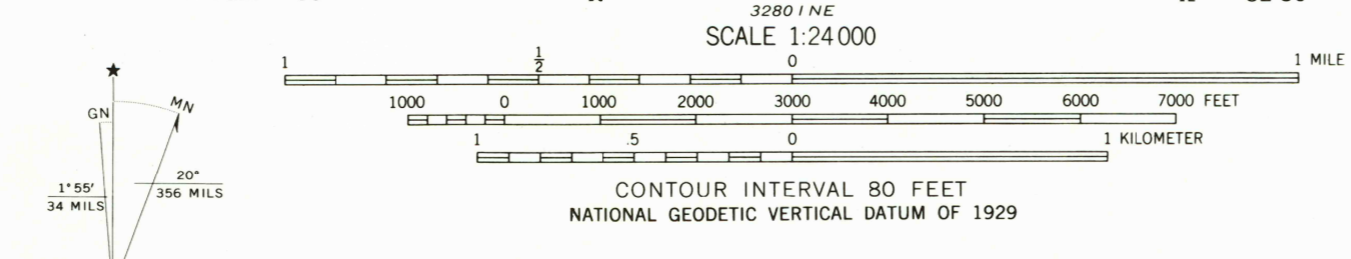
U.S. DEPARTMENT OF THE INTERIOR
U.S. GEOLOGICAL SURVEY

MOUNT STIMSON QUADRANGLE
MONTANA
7.5 MINUTE SERIES (TOPOGRAPHIC)

328 II NE
(GRANT TRAIL)



Mapped, edited, and published by the Geological Survey
Control by USGS and US&GS
Topography by photogrammetric methods from aerial photographs taken 1966. Field checked 1968
Polyconic projection. 1927 North American Datum
10,000-foot grid based on Montana coordinate system, north zone
1000-meter Universal Transverse Mercator grid ticks, zone 12, shown in blue
Land lines have not been established in this area
To place on the predicted North American Datum 1983 move the projection lines 11 meters north and 69 meters east as shown by dashed corner ticks
There may be private inholdings within the boundaries of the National or State reservations shown on this map



ROAD CLASSIFICATION
Trails
MOUNT STIMSON, MONT.
48113-E5-TF-024
1968
DMA 3281 II SE-SERIES V894

THIS MAP COMPLIES WITH NATIONAL MAP ACCURACY STANDARDS
FOR SALE BY U.S. GEOLOGICAL SURVEY, P.O. BOX 25286, DENVER, COLORADO 80225
A FOLDER DESCRIBING TOPOGRAPHIC MAPS AND SYMBOLS IS AVAILABLE ON REQUEST

RECEIVED
OCT 31 2001
USGS/IMU
HISTORICAL MAP ARCHIVES

